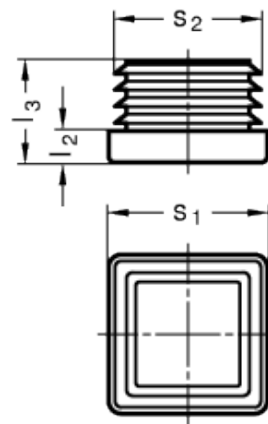
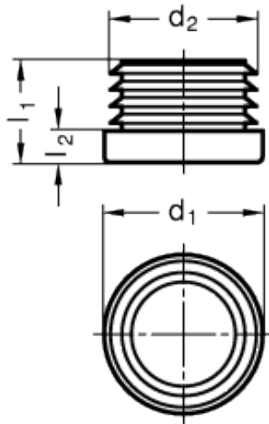


GN 991

Closing plugs



technical informations

Material

Polyamide based (PA) technopolymer.

Colour

Black, matte finish.

Features and applications

Tube end plugs GN 991 have been designed for sealing tube ends for safety or optical reasons. They are inserted into the tube end either by hand or with a mallet.

Accessories

- Construction tubings GN 990.
- Insert bushes GN 992.

Standard Elements	Main dimensions							Weight
Description	d ₁	s ₁	d _{2 ≈}	s _{2 ≈}	l _{1 ≈}	l _{2 ≈}	l ₃	g
GN 991-D10	D 10	-	9	-	15	3	-	1
GN 991-D12	D 12	-	11	-	14	4	-	1
GN 991-D14	D 14	-	13	-	13	4	-	1
GN 991-D15	D 15	-	14	-	16	4	-	1
GN 991-D16	D 16	-	14.5	-	15	5	-	1
GN 991-D18	D 18	-	17	-	16	5	-	2
GN 991-D20	D 20	-	19	-	16	5	-	2
GN 991-D25	D 25	-	23.5	-	16	5	-	3
GN 991-D30	D 30	-	29	-	16	5	-	3
GN 991-D32	D 32	-	30.5	-	16	5	-	4
GN 991-D35	D 35	-	34	-	16	5	-	5
GN 991-D40	D 40	-	35	-	17	5	-	6
GN 991-D42	D 42	-	38.5	-	17	5	-	6
GN 991-D45	D 45	-	44	-	16	5	-	7
GN 991-D48	D 48	-	45	-	20	5	-	9
GN 991-D50	D 50	-	45.5	-	23	5	-	11
GN 991-D55	D 55	-	53	-	19	5	-	11
GN 991-D60	D 60	-	58	-	22	4	-	15
GN 991-V10	-	V 10	-	9	-	3	14	1
GN 991-V12	-	V 12	-	11	-	4	15	1
GN 991-V16	-	V 16	-	15	-	5	17	2
GN 991-V20	-	V 20	-	19	-	5	17	2
GN 991-V25	-	V 25	-	24	-	5	17	4
GN 991-V30	-	V 30	-	29	-	5	17	5
GN 991-V40	-	V 40	-	36	-	5	20	9
GN 991-V45	-	V 45	-	44	-	5	20	10
GN 991-V50	-	V 50	-	46	-	5	24	15



STANDARD MACHINE ELEMENTS WORLDWIDE