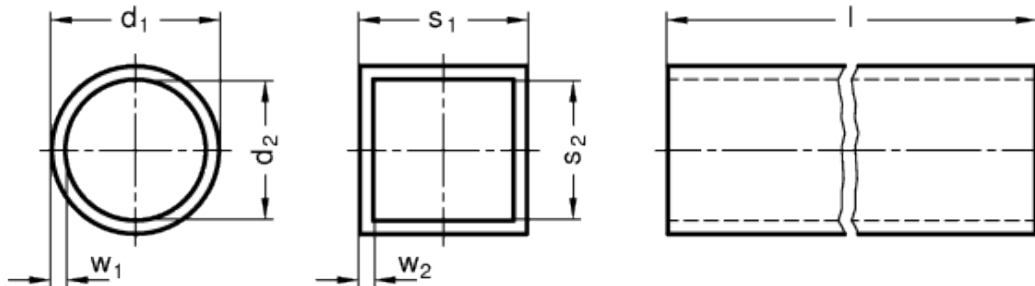
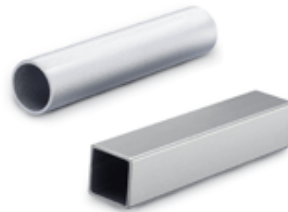


GN 990-NI

Connecting tubes



INOX
Stainless Steel



technical informations

Material

AISI 304 stainless steel NI, blank BL untreated.

Features and applications

Construction tubings GN 990-NI can be supplied in any length up to 3000 mm.

The tolerances specified for the outside diameter of the round construction tubings comply with the requirements for split mono-block connector clamps. Otherwise the tolerances comply with DIN 2391, DIN 2395 and DIN 2462.

Two-piece connector clamps allow obviously larger tolerances on round and square construction tubings.

Accessories

- Tube end plugs GN 991.
- Insert bushes GN 992.

Standard Elements	Main dimensions							Weight
Description	d_1	s_1	$l_{\pm 0,5}$	d_2	s_2	w_1	w_2	g
GN 990-NI-D10-100-BL	$D 10_{\pm 0,1}$	-	100	7	-	1.5	-	32

GN 990-NI-D12-100-BL	D 12 $\pm 0,1$	-	100	9	-	1.5	-	40
GN 990-NI-D14-100-BL	D 14 $\pm 0,1$	-	100	11	-	1.5	-	47
GN 990-NI-D15-100-BL	D 15 $\pm 0,1$	-	100	12	-	1.5	-	52
GN 990-NI-D16-100-BL	D 16 $\pm 0,1$	-	100	13	-	1.5	-	54
GN 990-NI-D18-100-BL	D 18 $\pm 0,1$	-	100	15	-	1.5	-	61
GN 990-NI-D20-100-BL	D 20 $\pm 0,1$	-	100	16	-	2	-	89
GN 990-NI-D25-100-BL	D 25 $\pm 0,1$	-	100	21	-	2	-	114
GN 990-NI-D30-100-BL	D 30 $\pm 0,1$	-	100	26	-	2	-	139
GN 990-NI-D32-100-BL	D 32 $\pm 0,15$	-	100	28	-	2	-	149
GN 990-NI-D35-100-BL	D 35 $\pm 0,15$	-	100	31	-	2	-	164
GN 990-NI-D40-100-BL	D 40 $\pm 0,15$	-	100	34	-	3	-	276
GN 990-NI-D42.4-100-BL	D48.3	-	100	37.2	-	2.6	-	290
GN 990-NI-D48.3-100-BL	D48.3	-	100	43.1	-	2.6	-	300
GN 990-NI-D50-100-BL	D 50 $\pm 0,2$	-	100	44	-	3	-	350
GN 990-NI-D60-100-BL	D 60 $\pm 0,25$	-	100	52	-	4	-	550
GN 990-NI-D60.3-100-BL	D60.3	-	100	53.1	-	3.6	-	570
GN 990-NI-V20-100-BL	-	V 20	100	-	16	-	2	113
GN 990-NI-V25-100-BL	-	V 25	100	-	21	-	2	145
GN 990-NI-V30-100-BL	-	V 30	100	-	26	-	2	176
GN 990-NI-V40-100-BL	-	V 40	100	-	34	-	3	335
GN 990-NI-V45-100-BL	-	V 45	100	-	39	-	3	382
GN 990-NI-V50-100-BL	-	V 50	100	-	44	-	3	431



STANDARD MACHINE ELEMENTS WORLDWIDE