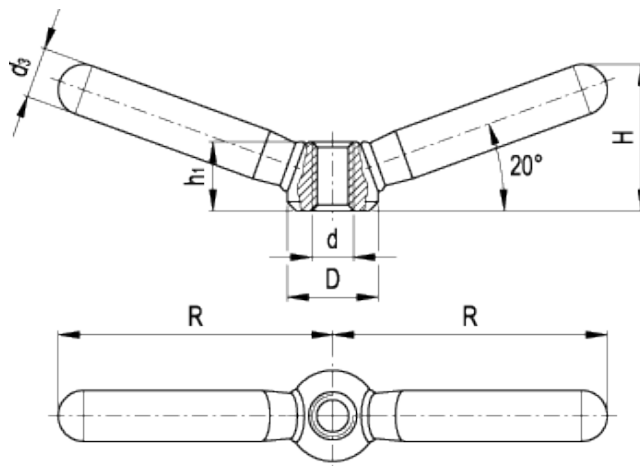


# GN 99.7

Clamping nuts with double lever



technical informations

### Material

Steel, sandblasted matte finish. The two lever arms are butt-welded to the hub.

### Assembly

Tapped through hole.

Standard Elements	Main dimensions				Mounting hole		Weight
Description	D	R	H	$d_3$	d	$h_1$	g
GN 99.7-16-M8	16	47.5	26	9	M8	12.5	55
GN 99.7-20-M10	20	59.5	32	11	M10	15	105
GN 99.7-25-M12	25	75.5	40	14	M12	19	210
GN 99.7-32-M16	32	94.5	52	18	M16	25	432
GN 99.7-40-M20	40	118	62	20	M20	31	716



ELESA and GANTER models all rights reserved in accordance with the law. Always mention the source when reproducing our drawings.

**STANDARD MACHINE ELEMENTS WORLDWIDE**