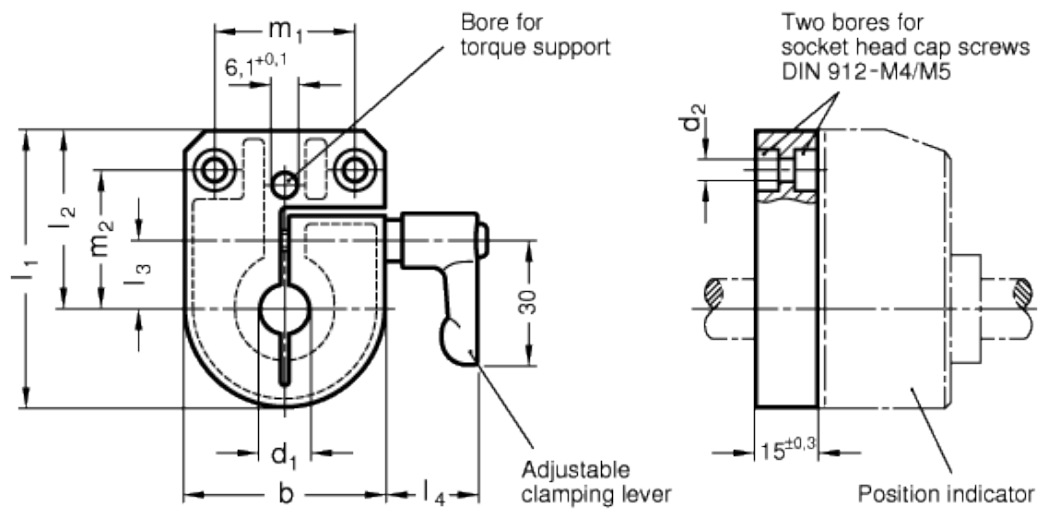


GN 953.6

Locking bases



technical informations

Material

Zinc alloy die-cast bases for spindle locking, epoxy resin coating, black colour, matte finish.

Adjustable handle GN 302

- Lever body, zinc alloy die-cast, RAL 9005 black matte finish, epoxy resin coating.
- Black-oxide steel threaded stud with toothed element for coupling to the lever body, treated steel retaining screw and return spring.

Accessories on request (to be ordered separately)

GN 953.6 locking bases allow an easy and quick locking of the spindles after their positioning. They are equipped with a $\varnothing 6$ mm to fit the referring pin of the indicator. They can be assembled with the handle either on the right or on the left and can be fitted to the machine by means of two M4 / M5 cylindrical head screws (not included in the supply).

Standard Elements	Main dimensions								Mounting hole	Weight
Description	b	d ₂	l ₁	l ₂	l ₃	l ₄	m ₁	m ₂	d ₁ +0.06/+0.02	g
GN 953.6-48-B12	48	5.5	67	43.1	16	22	34	33.6	B12	179
GN 953.6-48-B14	48	5.5	67	43.1	16	22	34	33.6	B14	175
GN 953.6-48-B15	48	5.5	67	43.1	16	22	34	33.6	B15	173
GN 953.6-48-B16	48	5.5	67	43.1	16	22	34	33.6	B61	168
GN 953.6-48-B20	48	5.5	67	43.1	16	22	34	33.6	B20	156



STANDARD MACHINE ELEMENTS WORLDWIDE