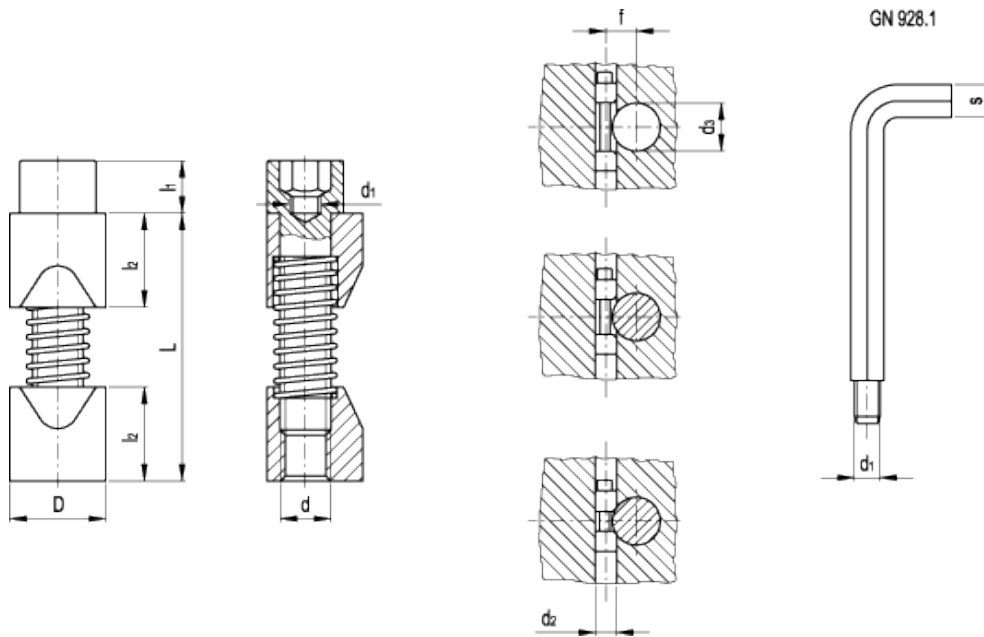


GN 928

Clamping elements
for round cross section shafts



technical informations

Body

Black-oxide steel.

Cap screw

DIN 912, zinc-plated steel.

Features and applications

GN 928 shaft clamping units are used to clamp economically and rapidly round workpieces from 6 to 125 mm. For the application of GN 928 on large holders and away from the outside edge, spacers or special bolts are available.

Standard Elements	Main dimensions											Weight	Mounting tool
Description	D _{h11}	d	d ₁	d _{2H7}	d ₃	L	l ₁	l ₂	f _{+0.2}	s	g		
GN 928-8	8	M4	M2.5	8	6 ÷ 10	22	4	8	d3/2 + 2.8	3	5	GN 928.1-3	
GN 928-10	10	M5	M3	10	10 ÷ 15	30	5	10	d3/2 + 3.3	4	15	GN 928.1-4	
GN 928-12	12	M6	M4	12	15 ÷ 20	36	6	12	d3/2 + 3.5	5	20	GN 928.1-5	
GN 928-16	16	M8	M5	16	20 ÷ 30	48	8	16	d3/2 + 4	6	52	GN 928.1-6	
GN 928-20	20	M10	M6	20	30 ÷ 40	60	10	20	d3/2 + 4.8	8	105	GN 928.1-8	
GN 928-25	25	M12	M8	25	40 ÷ 60	72	12	25	d3/2 + 5.6	10	190	GN 928.1-10	
GN 928-30	30	M16	M10	30	60 ÷ 125	85	16	30	d3/2 + 7.9	14	345	GN 928.1-14	



STANDARD MACHINE ELEMENTS WORLDWIDE