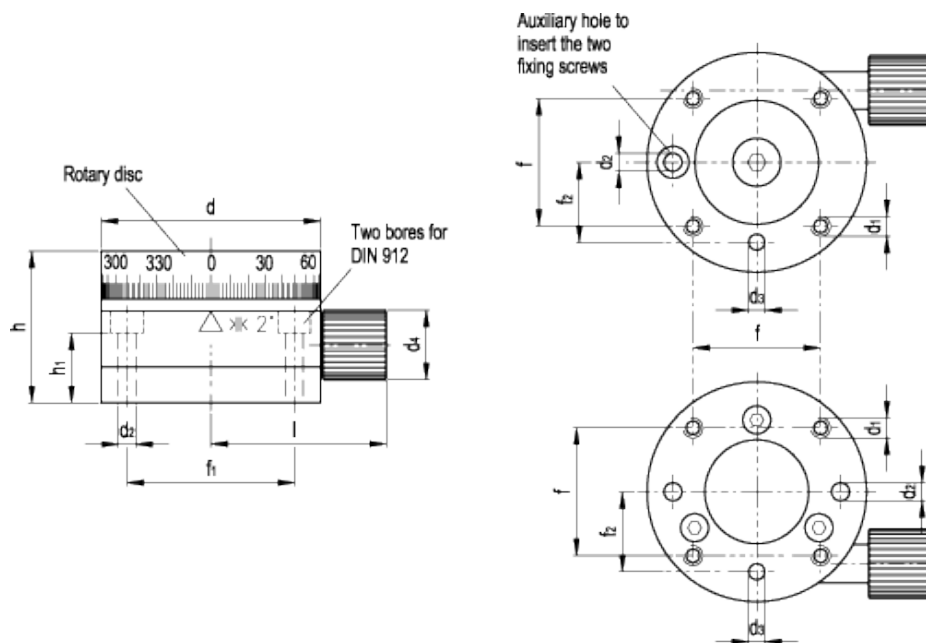


# GN 900.6

Rotary tables



## technical informations

### Rotary disc

AISI 303 stainless steel.

### Operating knob

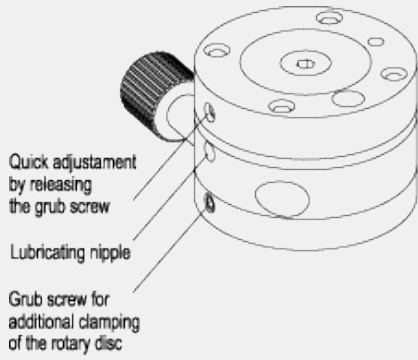
Black anodised aluminium.

### Other parts

Rustproof steel

### Features and applications

Rotary tables GN 900.6 is a turning unit for manual operation. To get the turning movement we use a high quality worm gear. The rotary table is also fitted with a fast adjustment and for this purpose a grub screw on the side of the rotary disc has to be released. In addition the rotary disc can also be clamped via an easily accessible grub screw. In both cases internal conically shaped arresting components come into use.



Standard Elements	Main dimensions											Weight	GN 900.4 mounting plates
Description	d <sub>H7</sub>	d <sub>1</sub>	d <sub>2</sub>	d <sub>3 H7</sub>	d <sub>4</sub>	h	h <sub>1</sub>	l	f	f <sub>1</sub>	f <sub>2 ±0.02</sub>	g	
GN 900.6-55	55	8	4.3	4	17	38	17.5	44	32	42	20	662	GN 900.4-50
GN 900.6-80	80	8	5.4	4	23	42	24	59	40	60	30	1800	GN 900.4-80 GN 900.4-120



ELESA and GANTER models all rights reserved in accordance with the law. Always mention the source when reproducing our drawings.

STANDARD MACHINE ELEMENTS WORLDWIDE