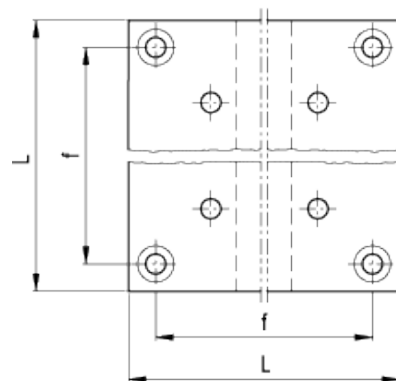
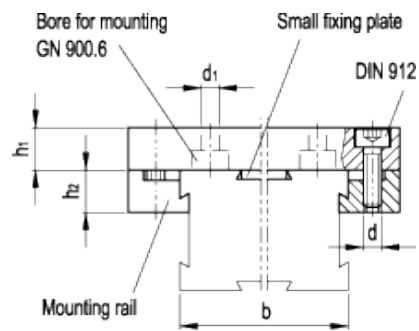


GN 900.4

Mounting plates



technical informations

Material

Anodised aluminium, natural colour.

Socket head cap screw

Stainless steel, according to ISO 4762.

Standard executions available

- Version A: without fixing holes.
- Version B: with fixing holes for rotary tables.

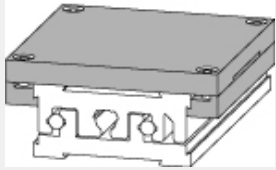
Features and applications

Mounting plates GN 900.4 version A are used for installing fixtures on the operator's side. Version B is used for installing a rotary table [GN 900.6](#).

The mounting plate can be simply clamped on to the slide and no additional drilled holes are required.

The small fixing plates serves as an additional fine adjustment of the mounting plate with the adjustable slide unit.

Assembly example



Standard Elements	Main dimensions							Weight	GN 900.6 rotary tables
Description	b	L	d	d ₁	h ₁	h ₂	f	g	
GN 900.4-30-41-A	30	41	M2.5	-	5	4.2	35.4	29	-
GN 900.4-50-67-A	50	67	M3	-	8	7	58	120	-
GN 900.4-50-67-B	50	67	M3	5.5	8	7	58	125	GN 900.6-55
GN 900.4-80-105-A	80	105	M4	-	12	12.5	92	440	-
GN 900.4-80-105-B	80	105	M4	5.5	12	12.5	92	440	GN 900.6-80
GN 900.4-120-145-A	120	145	M5	-	16	13.8	131.8	1100	-
GN 900.4-120-145-B	120	145	M5	5.5	16	13.8	131.8	1055	GN 900.6-80



ELESA and GANTER models all rights reserved in accordance with the law. Always mention the source when reproducing our drawings.

STANDARD MACHINE ELEMENTS WORLDWIDE