

Clamping arms

with slotted hole, for swing clamps GN 875 / GN 876

SPECIFICATION

Aluminum **AL**
 hard anodized **HE**
 wear-resistant surface
 Flanged washers
 Steel, zinc plated, blue passivated
 Socket cap screw DIN 912
 Steel, zinc plated, blue passivated
 Washer ISO 7092
 Steel, zinc plated, blue passivated

INFORMATION

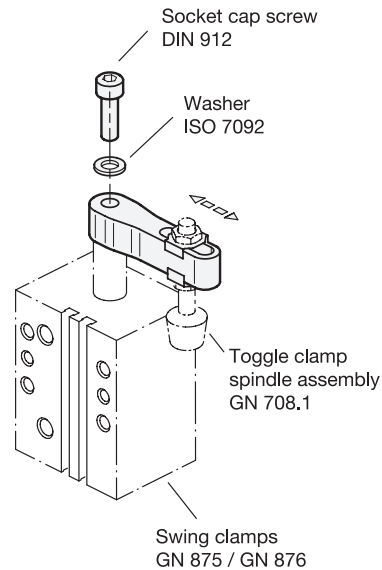
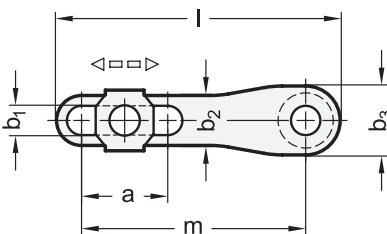
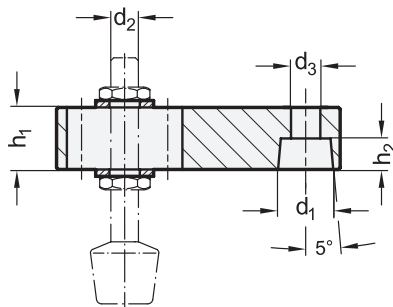
Clamping arms GN 875.2 with slotted hole designed as accessories to swing clamps GN 875 (see page) / GN 876 (see page). The slotted hole allows arbitrary positioning of application-specific pressing elements in connection with the two flanged washers.

The angle orientation of the clamping arm can be set arbitrarily during mounting on the swing clamp. When tightening the screw, the piston rod must not experience any torque. The clamping arm must therefore be held to prevent twisting.

Included are a socket cap screw DIN 912 and a washer ISO 7092 for fastening to the swing clamp as well as two flanged washers for fastening the clamping bolts.

ACCESSORY

- Toggle clamp spindle assemblies GN 708.1 (see page 1625)



GN 875.2

Description	for swing clamps Size	d1	m	a	b1	b2	b3	d2	d3	h1	h2	l	⚖
GN 875.2-AL-14-50-HE	25	14	50	20	6.5	11.3	18	M 6	8.5	16	6.5	64.6	41
GN 875.2-AL-16-65-HE	32 / 40	16	65	25	8.5	14.5	20	M 8	8.5	18	9	82.2	67
GN 875.2-AL-20-85-HE	50 / 63	20	85	30	10.5	17.5	25	M 10	10.5	23	10	106.2	139