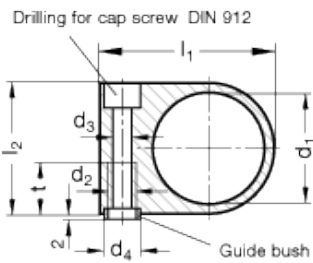
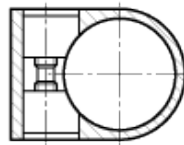


GN 873

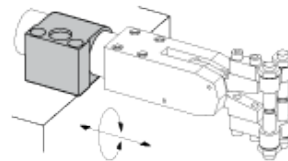
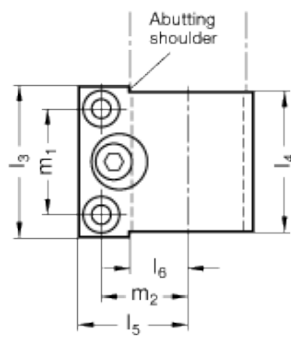
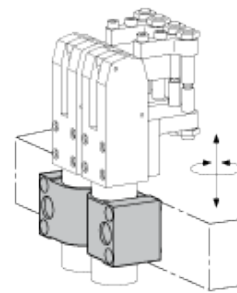
Collar clamps



Shaft clamping unit



Mounting examples



technical informations

Material

Black-oxide steel C45.

Parts included in the supply

Guide bushes [GN 870](#).

Features and applications

The collar clamps GN 873 greatly increases the mounting possibilities and, with that, the field of applications for power clamps is vastly increased.

The abutting shoulder can be used for precise positioning of the power clamps thus allowing a problem free exchange of the latter.

The use of the two guide bushes ensures an exact and stable installation of the collar clamp as well as the power clamp. Other collar clamps for the sizes d1=40 (piston Ø 20) and d1=50 (piston Ø 40) are shown under the tube clamp connector range (see separate catalogue of Tube clamp connectors).

Standard Elements	Main dimensions													Weight
Description	d ₁	d ₂	d ₃	d ₄ H8/h6	l ₁	l ₂	l ₃	l ₄	l ₅	l ₆	m ₁	m ₂	t	g
GN 873-28	28	M8	6.5	11	52	34	39	36	35	16	26	28.5	14	200
GN 873-40	40	M10	8.5	13	62.5	47	54	51	39	21	38	31	18.5	550
GN 873-50	50	M12	10.5	16	76	58	64	61	47	26	45	37.5	21	1000
GN 873-60	60	M12	10.5	16	86	68	69	66	52	31	50	42.5	18	1100



STANDARD MACHINE ELEMENTS WORLDWIDE