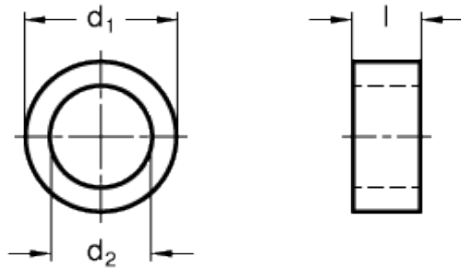
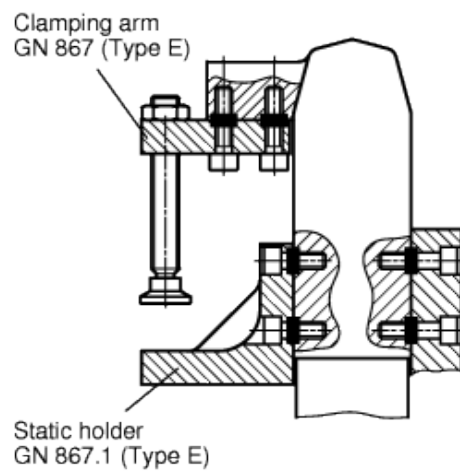


GN 870

Guide bushes



Examples of application



technical informations

Material

Black-oxide steel.

Features and applications

Guide bushes GN 870 ensure accurate location of the clamping jaws and static holders, as well as the power clamps.

At the same time they absorb side thrust and eliminate excessive load on the mounting screws.

Guide bushes are part of the accessories supplied. However, the latter have to be ordered separately when ordering power clamps.

Standard Elements	Main dimensions			Weight
Description	d_1 h6	d_2	l	g
GN 870-7	7	5.1	4	1
GN 870-9	9	6.1	4	1
GN 870-11	11	8.1	4	1
GN 870-13	13	10.1	4	1



STANDARD MACHINE ELEMENTS WORLDWIDE