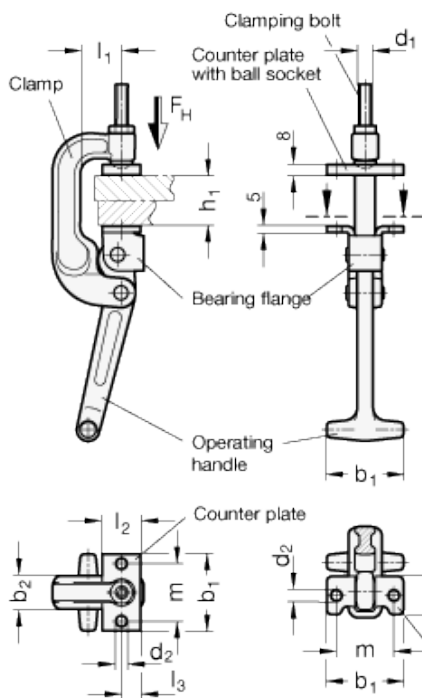
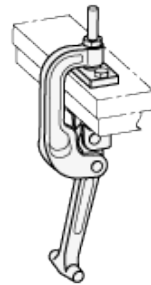


GN 855

C-Clamps



Examples of application



Clamping bolt GN 802



technical informations
Clamp / Operating handle
Forged steel, blackened.

Standard version

- Type C2: for screwing.

Bearing flange

Sheet steel, blackened.

Clamping bolt / Nut

Steel, blackened.

Counter plate / Bearing pin

Steel, blackened.

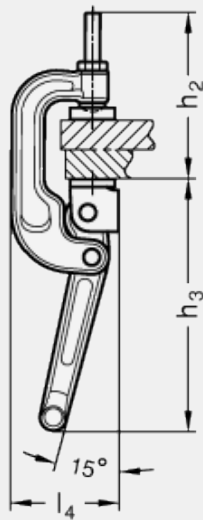
Features and applications

C-Clamps GN 855 feature an especially robust, sturdy and compact design, allowing them to be used under severe and demanding conditions, e.g. higher temperatures, dust, mist, etc.

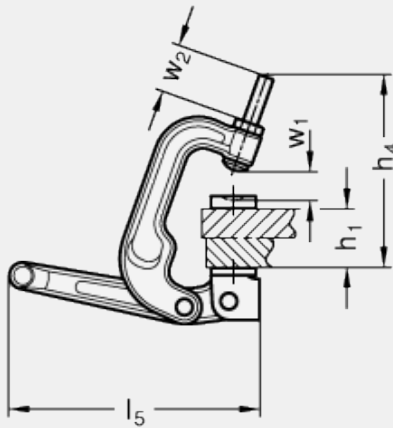
The C-Clamps are normally installed and fixed at the clamping point. The counter plate supplied loose has a ball socket and is designed for attaching to the counter piece to be clamped. In connection with the ball-type bolt, this configuration ensure the precise positioning of the latch clamp.

If the counter plate is not to remain at the counter piece to be clamped, the clamping bracket may alternatively also be used to hold GN 802 clamping bolts which have a pendulum-type bearing surface.

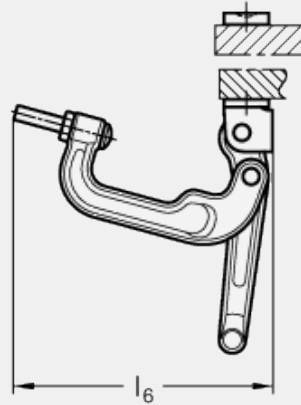
C-Clamp, tensioned



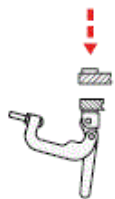
C-Clamp, loosened



C-Clamp, opened



Description of function



Place the pieces to be clamped into the clamping position, e.g. close the lid or place the piece to be clamped on top.



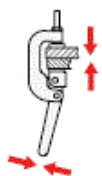
Then move the clamping bracket and the operating handle of the C-Clamp upwards.



Now move the clamping bracket forward such that the clamping bolt is located in the ball socket of the counter plate.



Move the operating handle downwards until the clamping force has exceeded the dead point.



When closed, the C-Clamp now holds its position on its own.

Description	Main dimensions																	FH in N	Weight
Description	$h_{1 \max.}$	l_1	b_1	b_2	d_1	d_2	h_2	h_3	h_4	l_2	l_3	l_4	l_5	l_6	m	w_1	w_2		g
GN 855-40-32-C2	40	32	60	26	M10	8.5	111	168	129	30	18	72	168	173	45	19	32	15000	1100
GN 855-75-32-C2	75	32	60	26	M10	8.5	146	168	164	30	18	72	168	207	45	1	32	15000	890



ELESA and GANTER models all rights reserved in accordance with the law. Always mention the source when reproducing our drawings.

STANDARD MACHINE ELEMENTS WORLDWIDE