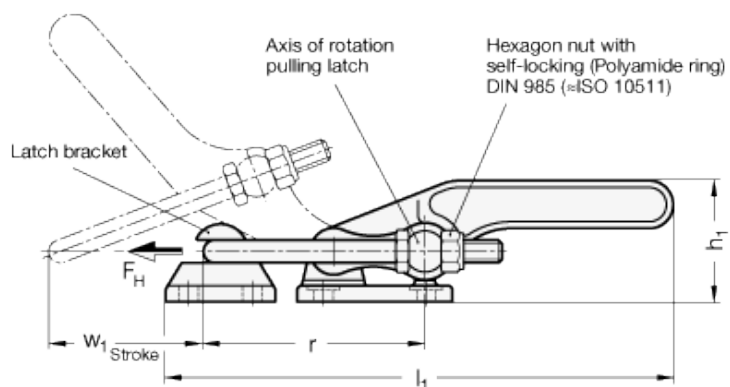


GN 852

Latch clamps - Heavy duty type



technical informations

Body and latch bracket

Black-oxide forged steel. Black coating (version T2) or blackened (version T2S).

Operating lever

Forged steel C40 with black coating.

Pulling latch and parallel fulcrum pin

Zinc-plated steel, blue passivated.

Assembly

All moving parts lubricated with special grease.

Standard versions available

- Version T2: with fixing holes, with pulling latch, with latch bracket.
- Version T: with fixing holes, without pulling latch, with latch bracket.
- Version T2S: for welding, with pulling latch, with latch bracket.
- Version TS: for welding, without pulling latch, with latch bracket.

Accessories on request

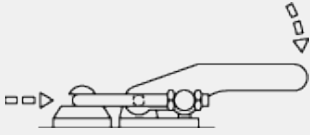
Latch clamps with safety pawl.

Features and applications

The heavy duty latch clamps GN 852 are used for very high holding forces as may be encountered in the field of plastic high pressure mould forming.

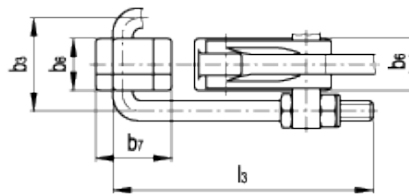
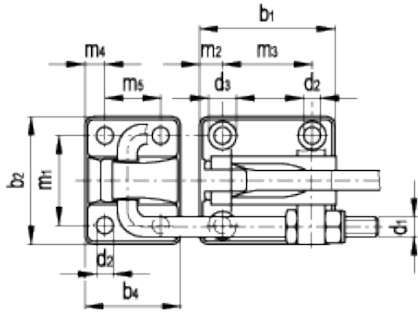
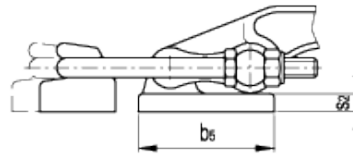
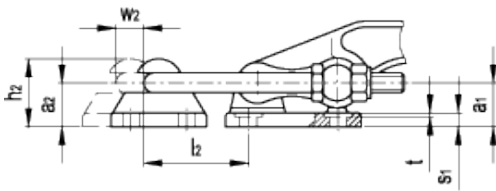
The stroke of the pulling latch can be adjusted within its range.

Besides the standard dimensions of the pulling latch above, more versions are available under GN 951.2.



GN 852-T2

GN 852-T2S



Standard Elements	Main dimensions																							Stroke	Adjustable range	Holdin force Fh in N			
Description	a ₁	a ₂	b ₁	b ₂	b ₃	b ₄	b ₅	b ₆	b ₇	d ₁	d ₂	d ₃	h ₁ ≈	h ₂	l ₁ ≈	l ₂ min.	l ₃ ≈	m ₁	m ₂	m ₃	m ₄	m ₅	r ≈	s ₁	s ₂	t	w ₁	w ₂ ≈	Fh in N
GN 852-1400-T2	22	21	68	64	46	48	-	-	-	M10	8.5	14	52	34.5	218	29.5	129	45	11.5	45	10	28	96	7	-	2	63	15	17000
GN 852-2800-T2	28	27	85	80	55	60	-	-	-	M12	10.5	16	65	42.5	265	32.1	151	57	14	57	12.5	35	96	9	-	2	78	15	40000
GN 852-1400-T2S	22	21	-	-	46	-	68	26.5	38	M10	-	-	52	34.5	218	-	129	-	-	-	-	-	96	-	9.2	-	65	15	17000
GN 852-2800-T2S	28	27	-	-	55	-	80	32	50	M12	-	-	65	42.5	265	-	151	-	-	-	-	-	117	-	12.7	-	75	15	40000
GN 852-1400-T	22	21	68	64	46	48	-	-	-	M10	8.5	14	52	34.5	218	29.5	129	45	11.5	45	10	28	96	7	-	2	65	15	17000
GN 852-2800-T	28	27	85	80	55	60	-	-	-	M12	10.5	16	65	42.5	265	32.1	151	57	14	57	12.5	35	96	7	-	2	75	15	40000
GN 852-1400-TS	22	21	-	-	46	-	68	26.5	38	M10	-	-	52	34.5	218	29.5	129	-	-	-	-	-	96	-	9.2	-	65	15	17000
GN 852-2800-TS	28	27	-	-	55	-	80	32	50	M12	-	-	65	42.5	265	32.1	151	-	-	-	-	-	117	-	12.7	-	75	15	40000

