



GN 852.3

Latch-Type Toggle Clamps

Steel / Stainless Steel, with safety hook, heavy duty type



Specification

Types

- Type **T6**: with mounting holes, with U-bolt latch, with catch
- Type **T**: with mounting holes, without U-bolt latch, with catch
- Type **T6S**: for welding, with U-bolt latch, with catch
- Type **TS**: for welding, without U-bolt latch, with catch

Body / Catch / Clamping lever

Steel C22

- forged
- black lacquered (Type T2 / T)
- blackened (Type T2S / TS)

U-bolt latch / Bearing bolt

Steel St 37

All moving parts lubricated
with special grease

Version in Stainless Steel **NI**

Body / Catch / Clamping lever / U-bolt latch

Stainless Steel AISI 304

forged

other parts

Stainless Steel AISI 303

all moving parts

lubricated with special grease

Information

The GN 852.3 latch type toggle clamps are compact in design and can be used to ensure high holding capacities.

When closing the spanner, a safety hook positively locks onto the body. This prevents the inadvertent or vibration-induced release from the clamping position. To open the safety hook it is unlocked per one-hand operation.

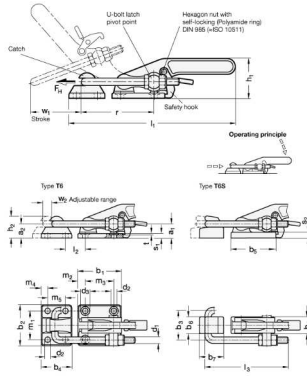
The U-bolt latch can be adjusted within its range.

In addition to the standard lengths for the U-bolt latch shown above, more lengths may be achieved by using series GN 951.1 square U-bolts.

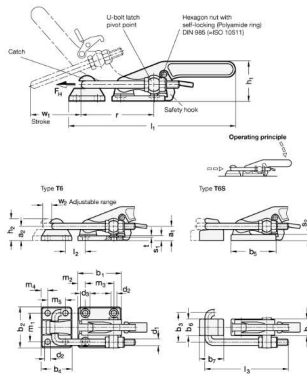
- [General information to toggle clamps](#).
- Pulling latch [GN 951.1](#)

Technical Information

- [Stainless Steel characteristics](#).



Description	Size	F _H in N	a ₁	a ₂	b ₁	b ₂	b ₃	b ₄	b ₅	b ₆	b ₇	d ₁	d ₂	d ₃	h ₁ ≈	h ₂	l ₁ ≈	l ₂ min.	l ₃ ≈	m ₁	m ₂	m ₃	m ₄	m ₅	r ≈	s ₁	s ₂	t	w ₁	w ₂	w ₂ ≈	Weight
GN 852.3-1700-T6	1700	17000	22	21	68	64	46	48	-	-	-	M 10	8.5	14	55	34.5	223	32.5	129	45	11.5	45	10	28	96	7	-	2	54	54	15	1127
GN 852.3-4000-T6	4000	40000	26	27	85	80	55	60	-	-	-	M 12	10.5	16	68	42.5	271	29.5	151	57	14	57	12.5	35	107	9	-	2	62	62	25	2018
GN 852.3-1700-T	1700	17000	-	-	68	64	-	48	-	-	-	M 10	8.5	14	55	34.5	-	-	129	45	11.5	45	10	28	-	7	-	2	-	-	15	960
GN 852.3-4000-T	4000	40000	-	-	85	80	-	60	-	-	-	M 12	10.5	16	68	42.5	-	-	151	57	14	57	12.5	35	-	9	-	2	-	-	25	1735
GN 852.3-1700-T6S	1700	17000	22	21	-	-	46	-	68	26.5	38	M 10	-	-	55	34.5	218	32.5	129	-	-	-	-	-	96	-	7	-	54	54	15	918
GN 852.3-4000-T6S	4000	40000	26	27	-	-	55	-	85	32	50	M 12	-	-	68	42.5	266	29.5	151	-	-	-	-	-	107	-	9	-	62	62	25	1668
GN 852.3-1700-TS	1700	17000	-	-	-	-	-	-	68	26.5	38	M 10	-	-	55	34.5	-	-	129	-	-	-	-	-	-	-	7	-	-	-	15	746
GN 852.3-4000-TS	4000	40000	-	-	-	-	-	-	85	32	50	M 12	-	-	68	42.5	-	-	151	-	-	-	-	-	-	-	9	-	-	-	25	1376



Description	Size	F _H in N	a ₁	a ₂	b ₁	b ₂	b ₃	b ₄	b ₅	b ₆	b ₇	d ₁	d ₂	d ₃	h ₁ ≈	h ₂	l ₁ ≈	l ₂ min.	l ₃ ≈	m ₁	m ₂	m ₃	m ₄	m ₅	r ≈	s ₁	s ₂	t	w ₁	w ₂	w ₂ ≈	Weight
GN 852.3-1700-T6-NI	1700	14000	22	21	68	64	46	48	-	-	-	M 10	8.5	14	55	34.5	223	32.5	129	45	11.5	45	10	28	96	7	-	2	54	54	15	1131
GN 852.3-4000-T6-NI	4000	30000	26	27	85	80	55	60	-	-	-	M 12	10.5	16	68	42.5	271	29.5	151	57	14	57	12.5	35	107	9	-	2	62	62	25	2017
GN 852.3-1700-T-NI	1700	14000	-	-	-	-	-	48	-	-	-	M 10	-	-	55	34.5	-	-	129	45	11.5	45	10	28	-	7	-	2	-	-	15	951
GN 852.3-4000-T-NI	4000	30000	-	-	-	-	-	60	-	-	-	M 12	-	-	68	42.5	-	-	151	57	14	57	12.5	35	-	9	-	2	-	-	25	1725
GN 852.3-1700-T6S-NI	1700	14000	22	21	68	64	46	-	68	26.5	38	M 10	8.5	14	55	34.5	218	32.5	129	-	-	-	-	-	96	-	7	-	54	54	15	932
GN 852.3-4000-T6S-NI	4000	30000	26	27	85	80	55	-	85	32	50	M 12	10.5	16	68	42.5	266	29.5	151	-	-	-	-	-	107	-	9	-	62	62	25	1691
GN 852.3-1700-TS-NI	1700	14000	-	-	-	-	-	-	68	26.5	38	M 10	-	-	55	34.5	-	-	129	-	-	-	-	-	-	-	7	-	-	-	15	765
GN 852.3-4000-TS-NI	4000	30000	-	-	-	-	-	-	85	32	50	M 12	-	-	68	42.5	-	-	151	-	-	-	-	-	-	-	9	-	-	-	25	1391