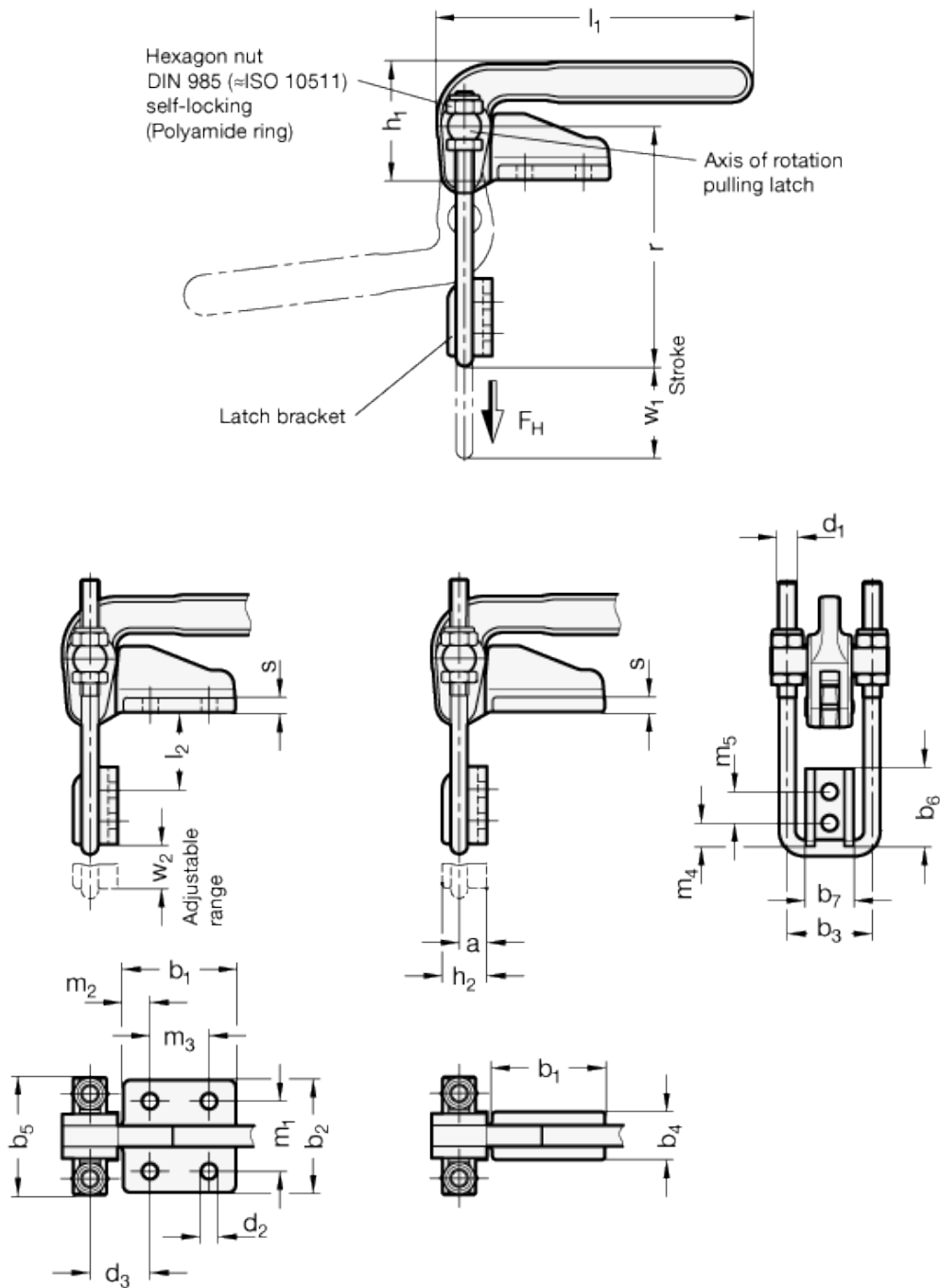


GN 852.1

Latch clamps





technical informations

Specification

Type

- Type T with fixing holes, without pulling latch, with latch bracket
- Type T3 with fixing holes, with pulling latch, with latch bracket
- Type TS for welding, without pulling latch, with latch bracket
- Type T3S for welding, with pulling latch, with latch bracket

Body / operating handle

Steel C22

- forged
- blackened

Latch bracket

blackened

Pulling latch / bearing pins

Steel St. 37

zinc plated, blue passivated

all moving parts
lubricated with special grease

Information

The pulling latch of the GN 852.1 latch clamp is adjustable within the adjusting range.

Once in the clamping position, the pulling latch is perpendicular to the clamping arm and to the fixing level of the latch clamp.

Next to the standard dimensions of the pulling latches shown above, more design variants are on offer under GN 951.2.

Standard Elements	Main dimensions																						Weight				
Description	Size	F _{H in N}	a	b ₁	b ₂	b ₃	b ₄	b ₅	b ₆	b ₇	d ₁	d ₂	d ₃	h ₁	h ₂	l ₁	l _{2 min.}	m ₂	m ₁	m ₃	m ₄	m ₅	r	s	w ₁	w ₂	g
GN 852.1-1400-T	1400	12000	15	61	61	46	26	64	42	26	M 10	8.5	32.5	64	24	171	44	14.5	38	32	12.5	17	108	8	50	22	-
GN 852.1-1400-T3	1400	12000	15	61	61	46	26	64	42	26	M 10	8.5	32.5	64	24	171	44	14.5	38	32	12.5	17	108	8	50	22	-
GN 852.1-1400-TS	1400	12000	15	61	61	46	26	64	42	26	M 10	8.5	32.5	64	24	171	44	14.5	38	32	12.5	17	108	8	50	22	-
GN 852.1-1400-T3S	1400	12000	15	61	61	46	26	64	42	26	M 10	8.5	32.5	64	24	171	44	14.5	38	32	12.5	17	108	8	50	22	-



ELESA and GANTER models all rights reserved in accordance with the law. Always mention the source when reproducing our drawings.

STANDARD MACHINE ELEMENTS WORLDWIDE