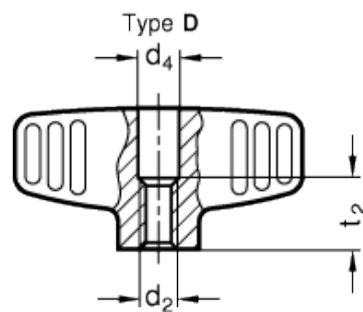
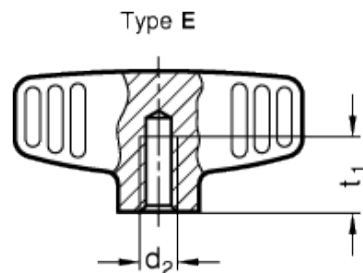
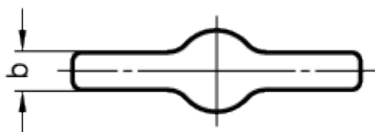
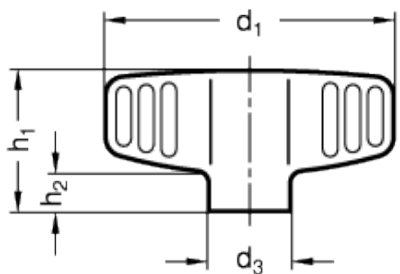


GN 834

Wing nuts



INOX
Stainless Steel



technical informations

Material

Precision casting stainless steel, sandblasted matte finish.

Assembly

- Type D: tapped through hole.
- Type E: tapped blind hole.

Features and applications

These wing nuts allow high tightening torque values.

Stainless steel, thanks to its high resistance to corrosion, allows the application of these wing nuts on machines and equipment

in those sectors where laws or particular hygienic, climatic and environmental factors make it mandatory to use corrosion resistant materials.

Standard Elements	Main dimensions						Mounting hole			Weight
Description	d ₁	d ₃	d ₄	b	h ₁	h ₂	d ₂	t _{1 min.}	t ₂	g
GN 834-46-M6-D-MT	46	13	6.5	6	22.5	6	M6	-	10	40
GN 834-46-M6-E-MT	46	13	-	6	22.5	6	M6	12	-	38
GN 834-46-M8-D-MT	46	13	8.5	6	22.5	6	M8	-	13	40
GN 834-46-M8-E-MT	46	13	-	6	22.5	6	M8	15	-	39
GN 834-58-M8-D-MT	58	16	8.5	7	26.5	7	M8	-	13	65
GN 834-58-M8-E-MT	58	16	-	7	26.5	7	M8	15	-	71
GN 834-58-M10-D-MT	58	16	10.5	7	26.5	7	M10	-	13	65
GN 834-58-M10-E-MT	58	16	-	7	26.5	7	M10	18	-	67



ELESA and GANTER models all rights reserved in accordance with the law. Always mention the source when reproducing our drawings.

STANDARD MACHINE ELEMENTS WORLDWIDE