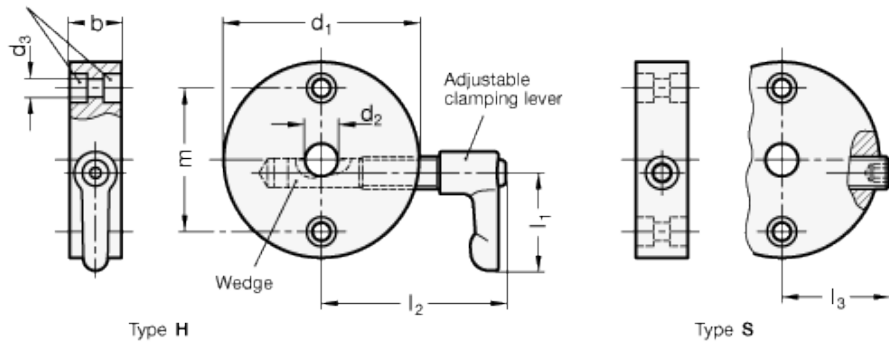


GN 826

Clamping elements



Two bores for
socket head cap screws
DIN 912 -M4/M5



technical informations

Material

Aluminium, anodized black ELS.

Wedge

Brass.

Adjustable hand levers GN 302-30

- Lever body, zinc alloy die-cast, RAL 9005 black matte finish, epoxy resin coating.
- with setting screw AISI 303 Stainless Steel.

Standard versions available

- Type H: Clamping screw with adjustable handle.
- Type S: Clamping screw with internal hexagon.

Features and applications

Clamping elements GN 826 are normally used in connection with control knobs and smaller handwheels. Spindles can so be clamped gently and easily and without much construction and installation effort. The clamping wedge stiffens the spindle, e.g., to prevent maladjustments caused by vibrations or to secure the spindle after adjustment. This clamping element can also be used to store the spindle. The clamping element may be mounted such that the clamping lever / the clamping screw is positioned either on the left or the right hand side. Indicator arrows which can be attached to the circumference of the clamping element are found under GN 711.1.

Standard Elements	Main dimensions							Mounting hole	Weight
Description	d ₁	d ₃	b	m	l ₁	l _{2 max.}	l _{3 max.}	d _{2 H7}	g
GN 826-40-B8-H-ELS	40	4.3	16	28	30	50	-	B8	-
GN 826-40-B10-H-ELS	40	4.3	16	28	30	50	-	B10	-
GN 826-50-B8-H-ELS	50	5.3	16	36	30	56	-	B8	-
GN 826-50-B10-H-ELS	50	5.3	16	36	30	56	-	B10	-
GN 826-50-B12-H-ELS	50	5.3	16	36	30	56	-	B12	-
GN 826-60-B10-H-ELS	60	5.3	16	44	30	61	-	B10	-
GN 826-60-B12-H-ELS	60	5.3	16	44	30	61	-	B12	-
GN 826-40-B8-S-ELS	40	4.3	16	28	30	-	27	B8	-
GN 826-40-B10-S-ELS	40	4.3	16	28	30	-	27	B10	-
GN 826-50-B8-S-ELS	50	5.3	16	36	30	-	32	B8	-
GN 826-50-B10-S-ELS	50	5.3	16	36	30	-	32	B10	-
GN 826-50-B12-S-ELS	50	5.3	16	36	30	-	32	B12	-
GN 826-60-B10-S-ELS	60	5.3	16	44	30	-	36	B10	-
GN 826-60-B12-S-ELS	60	5.3	16	44	30	-	36	B12	-



STANDARD MACHINE ELEMENTS WORLDWIDE