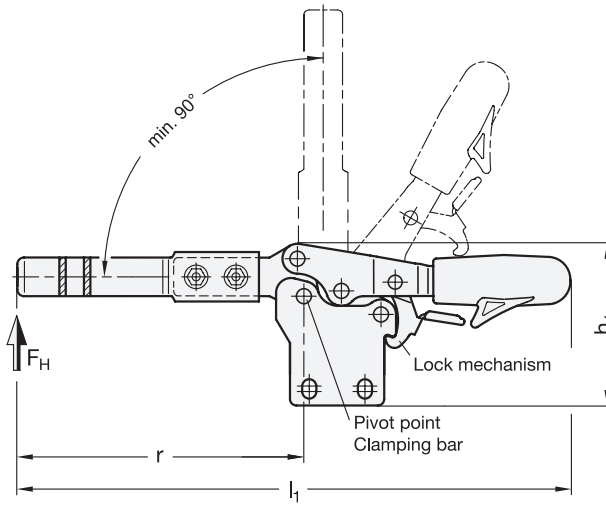
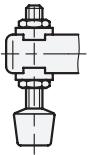


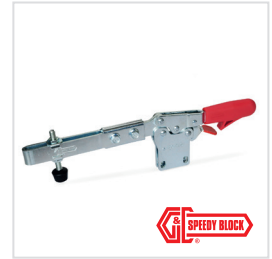
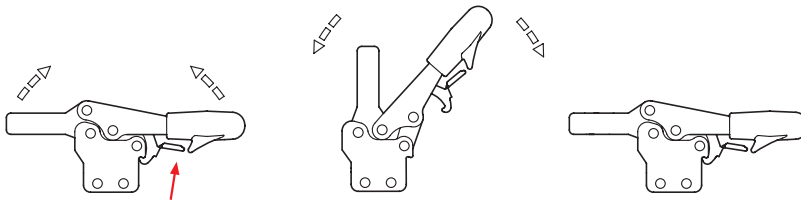
Type VL



Type VLC



Operating principle



**2 Type**

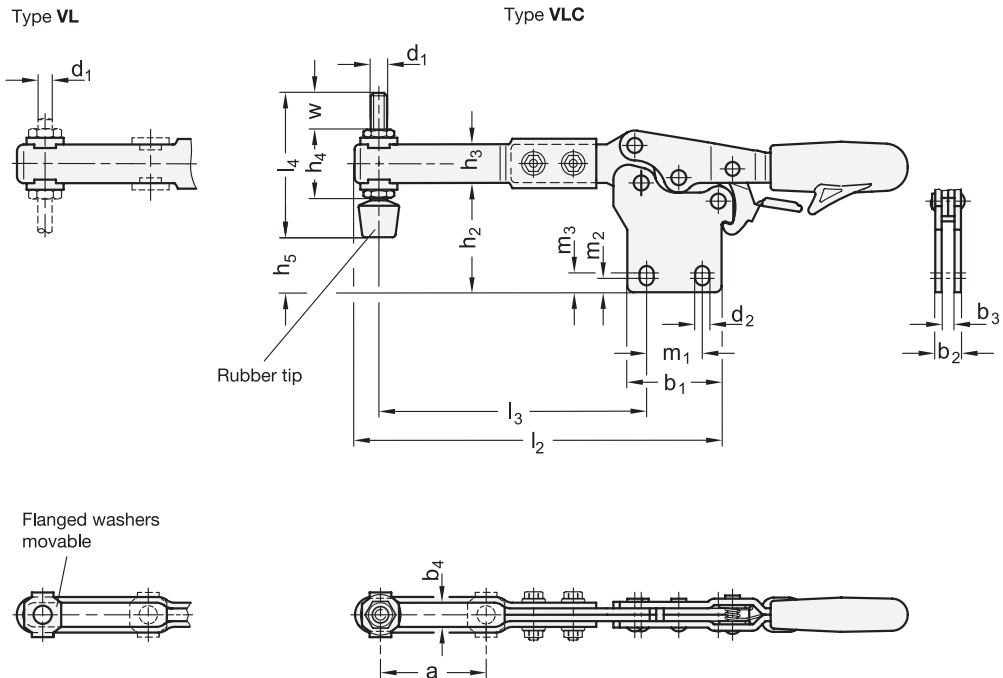
**VL** Clamping arm extended, with slotted hole and with two flanged washers

**VLC** Clamping arm extended, with slotted hole, two flanged washers and clamping screw GN 708.1

**1**

Size	F <sub>H</sub> in N Holding capacity	a ≈	b <sub>1</sub>	b <sub>2</sub>	b <sub>3</sub>	b <sub>4</sub>	d <sub>1</sub>	d <sub>2</sub>	h <sub>1</sub> ≈	h <sub>2</sub>	h <sub>3</sub>
130	600	67,5	36	10	5	6,3	M 6	5,6	64,5	44	16
230	1100	71,5	44	12	6	8,2	M 8	6,6	75,5	51	18

Size	h <sub>4</sub>	h <sub>5</sub> max.	l <sub>1</sub> ≈	l <sub>2</sub> ≈	l <sub>3</sub> ≈	l <sub>4</sub> max.	m <sub>1</sub>	m <sub>2</sub>	m <sub>3</sub>	m <sub>4</sub>	r ≈	w Adjustable range
130	25,5	27,5	251	171	132	64	26	5,8	8,8	7,5	141	17,5
230	30	27	283	196	150,5	78	26	6,5	6,5	6,5	160	20



## Specification

- Steel
  - Case-hardened steel C10 zinc plated, blue passivated
  - Bearing pins tempered
  - Bearing rivets case-hardened
- All moving parts lubricated with special grease
- Hand grip
  - High quality, oil resistant, red plastic
- Clamping screw GN 708.1, type A
  - Steel, zinc plated
  - Rubber tip 85 Shore A
- RoHS

## Accessory

- Clamping screws → Page 585 ff.
- Holders for clamping screws GN 801 (for type VL) → Page 590
- Clamping arm extenders GN 801.1 (for type VL) → New products
- Clamping arm extenders GN 801.2 (for type VL) → New products

## Information

GN 820.4 toggle clamps have a safety function whereby, during closing, a spring loaded safety hook latch ensures a secure locking connection. It prevents the inadvertent unlocking of the clamp due to vibrations or an accidental attempt of loosening / opening of the clamp. To open and release the clamp, pull up on the finger grip to disengage the safety hook latch mechanism (one hand operation).

They work according to the toggle principle: lever and clamping bar move in the opposite direction. They require less space for the clamping action.

Toggle clamps in the U-bar version with two flanged washers (type VL) can accommodate an application specific clamping screw. A spindle assembly with neoprene rubber tip is also included for type VLC.

see also...

- General information for toggle clamps → Page 500
- Toggle clamps GN 820.3 (with horizontal mounting base, with extended clamping arm) → New products

How to order

GN820.4-230-VLC

- |   |      |
|---|------|
| 1 | Size |
| 2 | Type |

