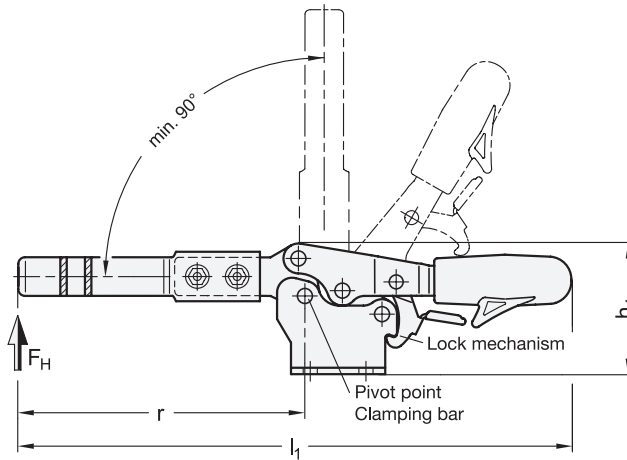
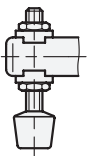


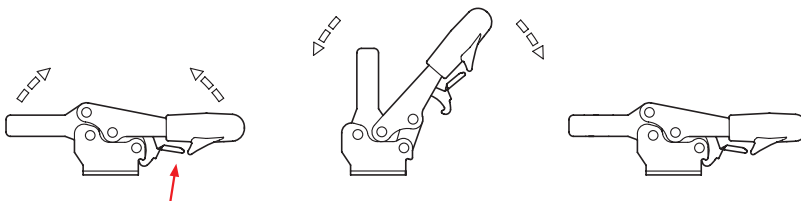
Type **UL**



Type **ULC**



Operating principle



2 Type

UL Clamping arm extended, with slotted hole and with two flanged washers

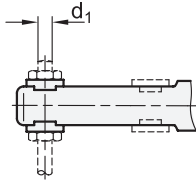
ULC Clamping arm extended, with slotted hole, two flanged washers and clamping screw GN 708.1

1

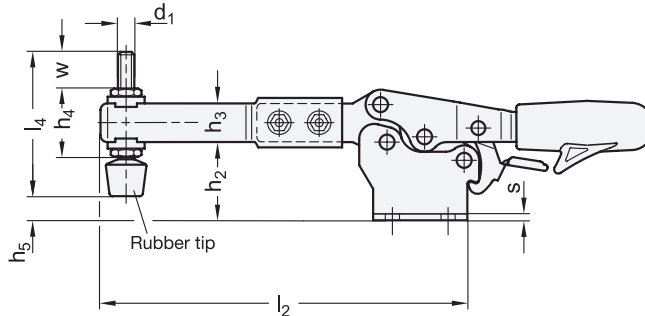
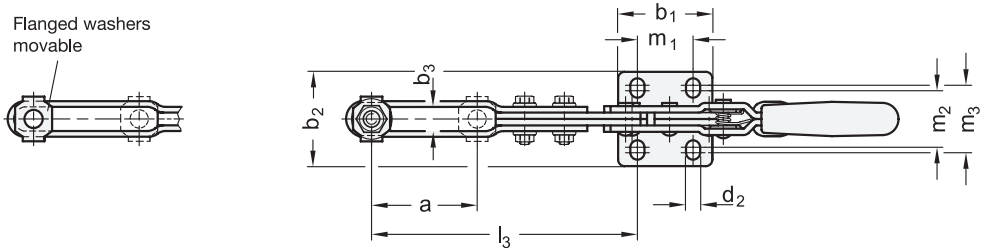
Size	F _H in N Holding capacity	a ≈	b ₁	b ₂	b ₃	d ₁	d ₂ ≈	h ₁ ≈	h ₂	h ₃	h ₄	h ₅ max.	l ₄
130	600	67,5	36	40	6,3	M 6	5,6	51	30,5	16	25,5	14	55
230	1100	71,5	44	44	8,2	M 8	6,6	61,5	36,5	18	30	12,5	68

Size	l ₁ ≈	l ₂ ≈	l ₃ ≈	m ₁	m ₂	m ₃	r ≈	s	w Adjustable range
130	251	171	132	26	22,4	28,4	141	2,5	17,5
230	283	198	150,5	26	26	31,5	159	3	20

Type UL



Type ULC

Flanged washers
movable

Specification

- Steel
 - Case-hardened steel C10 zinc plated, blue passivated
 - Bearing pins tempered
 - Bearing rivets case-hardened
- All moving parts lubricated with special grease
- Hand grip
 - High quality, oil resistant, red plastic
- Clamping screw GN 708.1, type A
 - Steel, zinc plated
 - Rubber tip 85 Shore A
- RoHS

Accessory

- Clamping screws → Page 585 ff.
- Holders for clamping screws GN 801 (for type UL) → Page 590
- Clamping arm extenders GN 801.1 (for type UL) → New products
- Clamping arm extenders GN 801.2 (for type UL) → New products

Information

GN 820.3 toggle clamps have a safety function whereby, during closing, a spring loaded safety hook latch ensures a secure locking connection. It prevents the inadvertent unlocking of the clamp due to vibrations or an accidental attempt of loosening / opening of the clamp. To open and release the clamp, pull up on the finger grip to disengage the safety hook latch mechanism (one hand operation).

They work according to the toggle principle: lever and clamping bar move in the opposite direction. They require less space for the clamping action.

Toggle clamps in the U-bar version with two flanged washers (Type UL) can accommodate an application specific clamping screw. A clamping screw with neoprene rubber tip is also included for type ULC.

see also...

- General information for toggle clamps → Page 500
- Toggle clamps GN 820.4 (with vertical mounting base, with extended clamping arm) → New products

How to order

GN 820.3-230-UL

- | | |
|---|------|
| 1 | Size |
| 2 | Type |

