

# GN 820.1

## Horizontal acting toggle clamps

Steel / Stainless Steel, with vertical mounting base



### Specification

#### Types

- Type **N**: U-bar version, with two flanged washers
- Type **NC**: U-bar version, with two flanged washers and GN 708.1 Spindle Assembly
- Type **P**: Solid bar version with clasp

#### Version in Steel

- Case-hardened Steel C10, zinc plated, blue passivated
- Bearing pins tempered
- Bearing rivets (fort size 355 and up) case-hardened

all moving parts

lubricated with special grease

Hand grip

High quality, oil resistant red plastic

Spindle assembly GN 708.1 (Type A)

- steel, zinc plated
- Rubber tip 85 Shore A

Version in Stainless Steel

Stainless Steel AISI 304 **NI**

all moving parts

lubricated with special grease

Hand grip

High quality, oil resistant red plastic

Spindle assembly GN 708.1 (Type A)

- Stainless Steel AISI 304
- Rubber tip 85 Shore A

### Information

GN 820.1 horizontal acting toggle clamps work according to the toggle principle: lever and clamping bar move in the opposite direction.

They require less space for the clamping action. In the clamped position the operating lever is in its horizontal position.

Horizontal acting toggle clamps in the U-bar version with two flanged washers (Type N) can accommodate an application specific clamping screw. A spindle assembly with neoprene rubber tip is also included for Type NC.

- [General information to toggle clamps](#)
- Horizontal acting toggle clamps [GN 820.2](#)

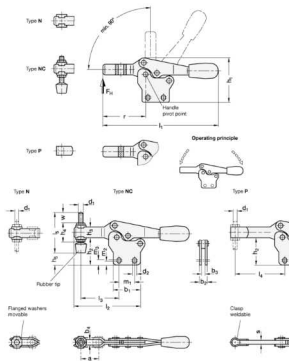
### Accessory

Spindle assemblies

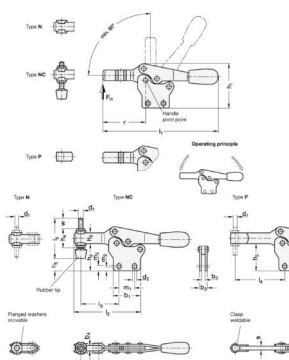
- GN 801 Clamp Mounts for Toggle Clamps (for Type N)
- GN 809 Clamp Mounts for Toggle Clamps (for Type P)

### Technical Information

- [Stainless Steel characteristics](#)



Description	Size	F <sub>H</sub> in N	a ≈	b <sub>1</sub>	b <sub>2</sub>	b <sub>3</sub>	b <sub>4</sub>	d <sub>1</sub>	d <sub>2</sub>	h <sub>1</sub> ≈	h <sub>2</sub>	h <sub>3</sub>	h <sub>4</sub>	l <sub>1</sub> ≈	l <sub>2</sub> ≈	l <sub>3</sub> ≈	l <sub>4</sub> max.	l <sub>5</sub>	m <sub>1</sub>	m <sub>2</sub>	m <sub>3</sub>	r ≈	s	w	Weight
<b>GN 820.1-75-N</b>	75	900	20	28	8	4	5.5	M 5	4.5	45.5	27.5	11	22.5	118	68	40	-	-	13.5	3.5	5	43	-	-	90
<b>GN 820.1-130-N</b>	130	1000	32	36	10	5	6.5	M 6	5.5	64	43	16	27	170	92	53	-	-	26	5.8	8.8	62	-	-	203
<b>GN 820.1-230-N</b>	230	1700	37	44	12	6	8.5	M 8	6.5	75	50	18	35	196	109	63.5	-	-	26	6.5	9	73	-	-	330
<b>GN 820.1-355-N</b>	355	1800	58	60	14	7	10.4	M 10	8.5	102	69	22	43	270	161	96	-	-	41	7.5	9.6	110	-	-	700
<b>GN 820.1-455-N</b>	455	3200	65	70	18	10	12.4	M 12	8.5	119	80.5	26	53	309	186	116	-	-	41.5	11	12.5	128	-	-	1200
<b>GN 820.1-75-NC</b>	75	900	20	28	8	4	5.5	M 5	4.5	45.5	27.5	11	22.5	118	68	40	-	45	13.5	3.5	5	43	-	15	90
<b>GN 820.1-130-NC</b>	130	1000	32	36	10	5	6.5	M 6	5.5	64	43	16	27	170	92	53	-	55	26	5.8	8.8	62	-	17.5	250
<b>GN 820.1-230-NC</b>	230	1700	37	44	12	6	8.5	M 8	6.5	75	50	18	35	196	109	63.5	-	68	26	6.5	9	73	-	20	0
<b>GN 820.1-355-NC</b>	355	1800	58	60	14	7	10.4	M 10	8.5	102	69	22	43	270	161	96	-	77	41	7.5	9.6	110	-	19	0
<b>GN 820.1-455-NC</b>	455	3200	65	70	18	10	12.4	M 12	8.5	119	80.5	26	53	309	186	116	-	100	41.5	11	12.5	128	-	33	0
<b>GN 820.1-75-P</b>	75	900	-	28	8	4	-	M 5	4.5	45.5	27.5	11	-	118	68	-	49.5	-	13.5	3.5	5	43	4	-	90
<b>GN 820.1-130-P</b>	130	1000	-	36	10	5	-	M 6	5.5	64	43	16	-	170	92	-	64	-	26	5.8	8.8	62	5	-	210
<b>GN 820.1-230-P</b>	230	1700	-	44	12	6	-	M 8	6.5	75	50	18	-	196	109	-	78	-	26	6.5	9	73	6	-	340
<b>GN 820.1-355-P</b>	355	1800	-	60	14	7	-	M 10	8.5	102	69	22	-	270	161	-	115	-	41	7.5	9.6	110	7	-	720
<b>GN 820.1-455-P</b>	455	3200	-	70	18	10	-	M 12	8.5	119	80.5	26	-	309	186	-	135	-	41.5	11	12.5	128	10	-	1230



Description	Size	F <sub>H</sub> in N	a ≈	b <sub>1</sub>	b <sub>2</sub>	b <sub>3</sub>	b <sub>4</sub>	d <sub>1</sub>	d <sub>2</sub>	h <sub>1</sub> ≈	h <sub>2</sub>	h <sub>3</sub>	h <sub>4</sub>	l <sub>1</sub> ≈	l <sub>2</sub> ≈	l <sub>3</sub> ≈	l <sub>4</sub> max.	l <sub>5</sub>	m <sub>1</sub>	m <sub>2</sub>	m <sub>3</sub>	r ≈	s	w	Weight
<b>GN 820.1-75-N-NI</b>	75	900	20	28	8	4	5.5	M 5	4.5	45.5	27.5	11	22.5	118	68	40	-	-	13.5	3.5	5	43	-	-	90
<b>GN 820.1-130-N-NI</b>	130	1000	32	36	10	5	6.5	M 6	5.5	64	43	16	27	170	92	53	-	-	26	5.8	8.8	62	-	-	200
<b>GN 820.1-230-N-NI</b>	230	1700	37	44	12	6	8.5	M 8	6.5	75	50	18	35	196	109	63.5	-	-	26	6.5	9	73	-	-	330
<b>GN 820.1-75-NC-NI</b>	75	900	20	28	8	4	5.5	M 5	4.5	45.5	27.5	11	22.5	118	68	40	-	45	13.5	3.5	5	43	-	15	90
<b>GN 820.1-130-NC-NI</b>	130	1000	32	36	10	5	6.5	M 6	5.5	64	43	14	27	170	92	53	-	55	26	5.8	8.8	62	-	17.5	0
<b>GN 820.1-230-NC-NI</b>	230	1700	37	44	12	6	8.5	M 8	6.5	75	50	18	35	196	109	63.5	-	68	26	6.5	9	73	-	20	400
<b>GN 820.1-75-P-NI</b>	75	900	-	28	8	4	-	M 5	4.5	45.5	27.5	11	-	118	68	-	49.5	-	13.5	3.5	5	43	4	-	93
<b>GN 820.1-130-P-NI</b>	130	1000	-	36	10	5	-	M 6	5.5	64	43	16	-	170	92	-	64	-	26	5.8	8.8	62	5	-	210
<b>GN 820.1-230-P-NI</b>	230	1700	-	44	12	6	-	M 8	6.5	75	50	18	-	196	109	-	78	-	26	6.5	9	73	6	-	340