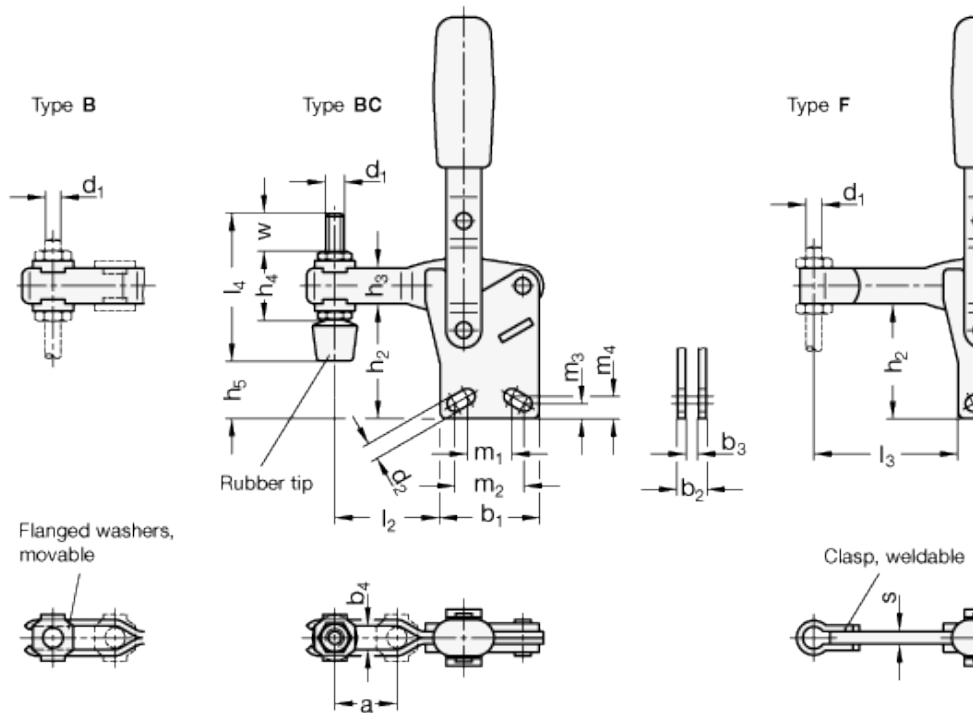
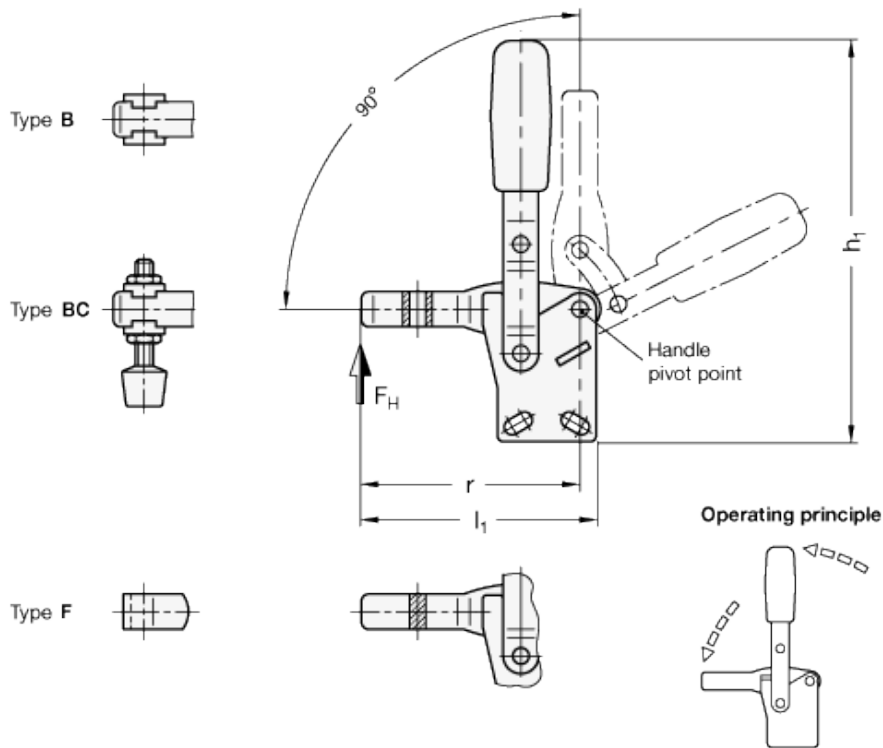


GN 810.1

Vertical clamps with vertical base





technical informations

Specification

Types

- Type B: U-bar Version, with two flanged washers
- Type BC: U-bar Version, with two flanged washers and GN 708.1 spindle assembly
- Type F: Solid bar Version, with clasp

Steel

- Case-hardened Steel C 10, zinc plated, blue passivated
- Bearing Pins tempered
- Bearing rivets (for size 230 and up) case hardened

All moving parts

lubricated with Special grease

Hand grip
High Quality, oil resistant red plastic

Spindle assembly GN 708.1 (Type A)
- Steel, zinc plated - Rubber tip 85 Shore A

Information

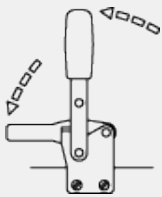
GN 810.1 Vertical acting toggle clamps work according to the toggle principle: lever and clamping bar move in the same direction. In the clamped position the operating lever is in its vertical position.

Vertical acting toggle clamps in the U-bar version with two flanged washers (Type B) can accommodate an application specific clamping screw. A spindle assembly with neoprene rubber tip is also included for Type BC.

Type F version can either be utilized by welding the clasp which can then accommodate an application specific hold-down fastener component, or by utilizing the bar in conjunction with the GN 809 Clamp Mounts to hold the work piece in place.

Accessory

- Spindle assemblies
- GN 801 Clamp Mounts for Toggle Clamps (for Type B)
- GN 809 Clamp Mounts for Toggle Clamps (for Type F)



Standard Elements	Main dimensions																				Holding force	Weight			
Description	a ≈	b ₁	b ₂	b ₃	b ₄	d ₁	d ₂ ≈	h ₁ ≈	h ₂	h ₃	h ₄	h ₅	l ₁	l ₂ ≈	l ₃ max.	l ₄	m ₁	m ₂	m ₃	m ₄	r ≈	s	w	FH [N]	g
GN 810.1-75-B	20	29	8	4	5.2	M5	4.5	109	32	11	-	-	66.5	31.5	-	-	15	16	5	5	62.5	-	-	750	95
GN 810.1-130-B	28	35	10	5	6.2	M6	5.5	156	42.5	16	-	-	85	42	-	-	12.5	19	6.5	7.5	79	-	-	1050	210
GN 810.1-230-B	40	43	12	6	8.5	M8	6.5	172	46	18	-	-	112	70	-	-	20	20	11.5	6.5	104	-	-	2000	350
GN 810.1-330-B	43	50	14	7	10.5	M10	8.5	218	66.5	22	-	-	129	66	-	-	28.7	32.3	10	9.5	122	-	-	2400	550
GN 810.1-430-B	64	58	18	10	12.5	M12	8.5	268	77.5	26	-	-	164	88	-	-	32	32	10	10	156	-	-	2800	920
GN 810.1-530-B	90	77	18	10	12.5	M12	12.5	337	117.5	32	-	-	223	128	-	-	50	51	12.5	12.5	212	-	-	4500	1800
GN 810.1-75-BC	20	29	8	4	5.2	M5	4.5	109	32	11	19	17	66.5	31.5	-	45	15	16	5	5	62.5	-	-	750	95
GN 810.1-130-BC	28	35	10	5	6.2	M6	5.5	156	42.5	16	25.5	25	85	42	-	55	12.5	19	6.5	7.5	79	-	-	1020	210
GN 810.1-230-BC	40	43	12	6	8.5	M8	6.5	172	46	18	30	24	112	70	-	68	20	20	11.5	6.5	104	-	-	2000	350
GN 810.1-330-BC	48	50	14	7	10.5	M10	8.5	268	66.5	22	37	39.5	129	66	-	77	23.7	32.3	10	9.5	122	-	-	2400	550
GN 810.1-430-BC	64	58	18	10	12.5	M12	8.5	268	77.5	26	43	45	164	88	-	100	32	32	10	10	156	-	-	2800	920
GN 810.1-530-BC	90	77	18	10	12.5	M12	12.5	337	117.5	32	49	85	223	128	-	100	50	51	12.5	12.5	212	-	-	4500	1800
GN 810.1-75-F	-	29	8	4	-	M5	4.5	109	32	11	-	-	67	-	41	-	15	16	5	5	62.5	4	15	750	95
GN 810.1-130-F	-	35	10	5	-	M6	5.5	156	42.5	16	-	-	86	-	54	-	12.5	19	6.5	7.5	79	5	17.5	1050	210
GN 810.1-230-F	-	43	12	6	-	M8	6.5	183	48	18	-	-	112	-	73	-	19	20	6.5	6.5	104	6	20	2400	550
GN 810.1-330-F	-	50	14	7	-	M10	8.5	218	66.5	22	-	-	130.5	-	86	-	28.7	32.3	10	9.5	122	7	19	2400	550
GN 810.1-430-F	-	58	18	10	-	M12	8.5	268	77.5	26	-	-	166	-	114	-	32	32	10	10	156	10	33	2800	920
GN 810.1-530-F	-	77	18	10	-	M12	12.5	337	117.5	32	-	-	225	-	155	-	50	51	12.5	12.5	212	10	27	4500	1800



STANDARD MACHINE ELEMENTS WORLDWIDE