

GN 751 DIN 71752

Fork joints

• Zinc-plated steel body.

- GN 751 fork joints consists of a DIN 71752 fork head assembled with fork pin with KL-shaft safety (type A) or a fork pin with a snap-on spring (type B, except M20).

Pin bore (d) available with standard thread, left-hand thread (L) or fine thread (F).

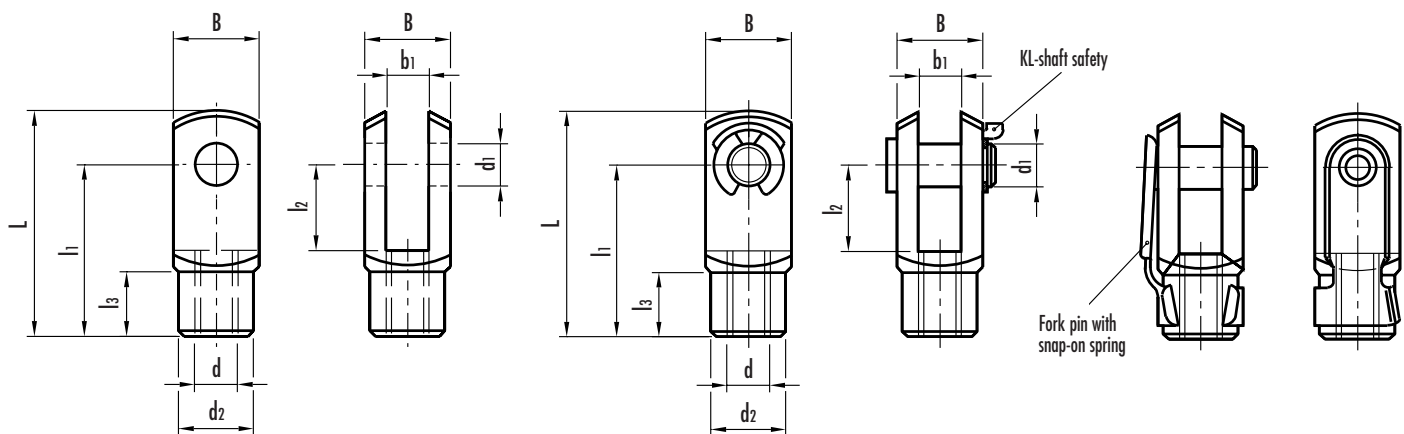
On request and for sufficient quantities GN 751 fork joints are available in stainless steel.



9

478

Machine elements



Standard elements	Standard elements	Main dimensions									Weight
Description (off pin)	Description (complete)	d1 H8/H9	d	d2	L	l1	l2	l3	B	b1	grams
DIN 71752-4-8-M4	GN 751-4-8-M4-A GN 751-4-8-M4-B	4	M4	8	21	16	8	6	8	4	5 6
DIN 71752-4-16-M4	GN 751-4-16-M4-A	4	M4	8	29	24	16	6	8	4	6
DIN 71752-5-10-M5	GN 751-5-10-M5-A GN 751-5-10-M5-B	5	M5	9	26	20	10	7.5	10	5	9
DIN 71752-5-10-M5L	GN 751-5-10-M5L-A GN 751-5-10-M5L-B		M5L M5L								10
DIN 71752-5-20-M5	GN 751-5-20-M5-A GN 751-5-20-M5-B	5	M5	9	36	30	20	7.5	10	5	19
DIN 71752-5-20-M5L	GN 751-5-20-M5L-A GN 751-5-20-M5L-B		M5 M5L M5L								19 15
DIN 71752-6-12-M6	GN 751-6-12-M6-A GN 751-6-12-M6-B	6	M6	10	31	24	12	9	12	6	20
DIN 71752-6-12-M6L	GN 751-6-12-M6L-A GN 751-6-12-M6L-B		M6 M6L M6L								20 20 20
DIN 71752-6-24-M6	GN 751-6-24-M6-A GN 751-6-24-M6-B	6	M6	10	43	36	24	9	12	6	20
DIN 71752-6-24-M6L	GN 751-6-24-M6L-A GN 751-6-24-M6L-B		M6 M6L M6L								25 20 25

Standard elements	Standard elements	Main dimensions									Weight
Description (off pin)	Description (complete)	d1 H8/h9	d	d2	L	l1	l2	l3	B	b1	grams
DIN 71752-8-16-M8	GN 751-8-16-M8-A GN 751-8-16-M8-B	8	M8	14	42	32	16	12	16	8	45
DIN 71752-8-16-M8F	GN 751-8-16-M8F-A GN 751-8-16-M8F-B		M8 M8F=M8x1 M8F=M8x1								50
DIN 71752-8-16-M8L	GN 751-8-16-M8L-A GN 751-8-16-M8L-B		M8L M8L								45 50
DIN 71752-8-32-M8	GN 751-8-32-M8-A GN 751-8-32-M8-B	8	M8	14	58	48	32	12	16	8	60
DIN 71752-8-32-M8F	GN 751-8-32-M8F-A GN 751-8-32-M8F-B		M8 M8F=M8x1 M8F=M8x1								65
DIN 71752-8-32-M8L	GN 751-8-32-M8L-A GN 751-8-32-M8L-B		M8L M8L								60 65
DIN 71752-10-20-M10	GN 751-10-20-M10-A GN 751-10-20-M10-B	10	M10	18	52	40	20	15	20	10	90
DIN 71752-10-20-M10F	GN 751-10-20-M10F-A GN 751-10-20-M10F-B		M10 M10F=M10x1.25 M10F=M10x1.25								91
DIN 71752-10-20-M10L	GN 751-10-20-M10L-A GN 751-10-20-M10L-B		M10L M10L								90 90 93 90
DIN 71752-10-40-M10	GN 751-10-40-M10-A GN 751-10-40-M10-B	10	M10	18	72	60	40	15	20	10	120
DIN 71752-10-40-M10F	GN 751-10-40-M10F-A GN 751-10-40-M10F-B		M10 M10F=M10x1.25 M10F=M10x1.25								125
DIN 71752-10-40-M10L	GN 751-10-40-M10L-A GN 751-10-40-M10L-B		M10L M10L								120 120 120 120
DIN 71752-12-24-M12	GN 751-12-24-M12-A GN 751-12-24-M12-B	12	M12	20	62	48	24	18	24	12	144
DIN 71752-12-24-M12F	GN 751-12-24-M12F-A GN 751-12-24-M12F-B		M12 M12F=M12x1.25 M12F=M12x1.25								150
DIN 71752-12-24-M12L	GN 751-12-24-M12L-A GN 751-12-24-M12L-B		M12L M12L								144 150 146 150
DIN 71752-12-48-M12	GN 751-12-48-M12-A GN 751-12-48-M12-B	12	M12	20	86	72	48	18	24	12	144
DIN 71752-12-48-M12F	GN 751-12-48-M12F-A GN 751-12-48-M12F-B		M12 M12F=M12x1.25 M12F=M12x1.25								200
DIN 71752-12-48-M12L	GN 751-12-48-M12L-A GN 751-12-48-M12L-B		M12L M12L								144 200 144 200
DIN 71752-14-28-M14	GN 751-14-28-M14-A GN 751-14-28-M14-B	14	M14	24	72	56	28	22.5	27	14	220
DIN 71752-14-28-M14F	GN 751-14-28-M14F-A GN 751-14-28-M14F-B		M14 M14F=M14x1.5 M14F=M14x1.5								218
DIN 71752-14-28-M14L	GN 751-14-28-M14L-A GN 751-14-28-M14L-B		M14L M14L								220 218 220 218
DIN 71752-14-56-M14	GN 751-14-56-M14-A GN 751-14-56-M14-B	14	M14	24	101	85	56	22.5	27	14	280
DIN 71752-14-56-M14F	GN 751-14-56-M14F-A GN 751-14-56-M14F-B		M14 M14F=M14x1.5 M14F=M14x1.5								300
DIN 71752-14-56-M14L	GN 751-14-56-M14L-A GN 751-14-56-M14L-B		M14L M14L								290 300 295 305
DIN 71752-16-32-M16	GN 751-16-32-M16-A GN 751-16-32-M16-B	16	M16	26	83	64	32	24	32	16	335
DIN 71752-16-32-M16F	GN 751-16-32-M16F-A GN 751-16-32-M16F-B		M16 M16F=M16x1.5 M16F=M16x1.5								340
DIN 71752-16-32-M16L	GN 751-16-32-M16L-A GN 751-16-32-M16L-B		M16L M16L								335 340 355 340
DIN 71752-16-64-M16	GN 751-16-64-M16-A GN 751-16-64-M16-B	16	M16	26	115	96	64	24	32	16	340
DIN 71752-16-64-M16F	GN 751-16-64-M16F-A GN 751-16-64-M16F-B		M16 M16F=M16x1.5 M16F=M16x1.5								460
DIN 71752-16-64-M16L	GN 751-16-64-M16L-A GN 751-16-64-M16L-B		M16L M16L								475 460 470 460
DIN 71752-20-40-M20	GN 751-20-40-M20-A	20	M20	34	105	80	40	30	40	20	800
DIN 71752-20-40-M20L	GN 751-20-40-M20L-A		M20L								675