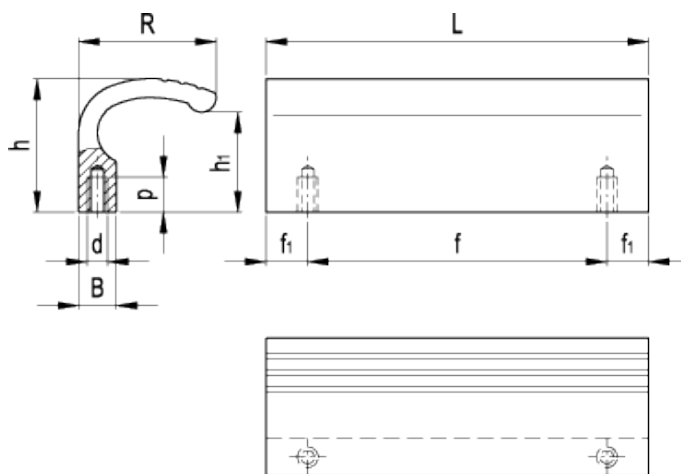


GN 730

Guard safety handles



technical informations

Material

Aluminium profile.

- Version EL: anodised, natural colour, matte finish.
- Version SW: RAL 9005 black colour, matte finish, epoxy resin coating.
- Version SR: RAL 9006 silver, matte finish, epoxy resin coating.
- Version BL: natural aluminium.

Assembly

Tapped blind holes.

Special executions on request (For sufficient quantities)

Different lengths.

Applications

GN 730 handles are particularly suitable to fit machine guards.

Standard Elements	Main dimensions							Mounting holes		Weight
	Description	L	f	f ₁	h	h ₁	R	B	d	
GN 730-110-EL	110	90	10	32	24	33	9.5	M6	9	94
GN 730-110-SW	110	90	10	32	24	33	9.5	M6	9	100
GN 730-110-BL	110	90	10	32	24	33	9.5	M6	9	94
GN 730-110-SR	110	90	10	32	24	33	9.5	M6	9	94
GN 730-125-EL	125	105	10	32	24	33	9.5	M6	9	108
GN 730-125-SW	125	105	10	32	24	33	9.5	M6	9	110
GN 730-125-BL	125	105	10	32	24	33	9.5	M6	9	105
GN 730-125-SR	125	105	10	32	24	33	9.5	M6	9	105
GN 730-140-EL	140	120	10	32	24	33	9.5	M6	9	120
GN 730-140-SW	140	120	10	32	24	33	9.5	M6	9	125
GN 730-140-BL	140	120	10	32	24	33	9.5	M6	9	120
GN 730-140-SR	140	120	10	32	24	33	9.5	M6	9	120



ELESA and GANTER models all rights reserved in accordance with the law. Always mention the source when reproducing our drawings.

STANDARD MACHINE ELEMENTS WORLDWIDE