

GN 728.5

Handles

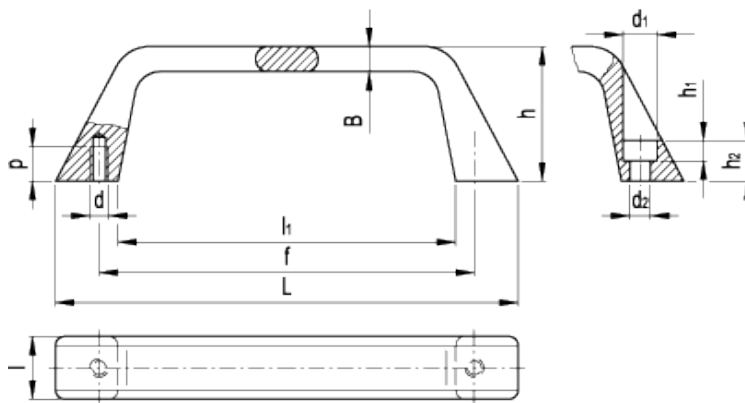


INOX
Stainless Steel



GN 728.5-A

GN 728.5-B



technical informations

Material

Stainless steel (precision casting), sand-blasted matte finish.

Assembly

- Execution A: back mounting, tapped blind holes.
- Execution B: front mounting, through holes for cylindrical-head screws with hexagon socket, DIN 912.

Features and applications

The assembly hole centres of executions A and B are equal. Therefore, they can be assembled in pairs opposed to each other (Fig. 1).



Fig.1

Stainless steel, thanks to its high resistance to corrosion, allows the application of these handles on machines and equipment in those sectors where laws or particular hygienic, climatic and environmental factors make it mandatory to use corrosion resistant materials.

Standard Elements	Main dimensions						Mounting holes						Weight
Description	L	f	h	B	l	l ₁	d	d ₁	d ₂	h ₁	h ₂	p _{min}	g
GN 728.5-120-A	147	120	42.5	8	22.5	108	M6	-	-	-	-	10	263
GN 728.5-120-B	147	120	42.5	8	22.5	108	-	11	6.4	6.6	13	-	234



ELESA and GANTER models all rights reserved in accordance with the law. Always mention the source when reproducing our drawings.

STANDARD MACHINE ELEMENTS WORLDWIDE