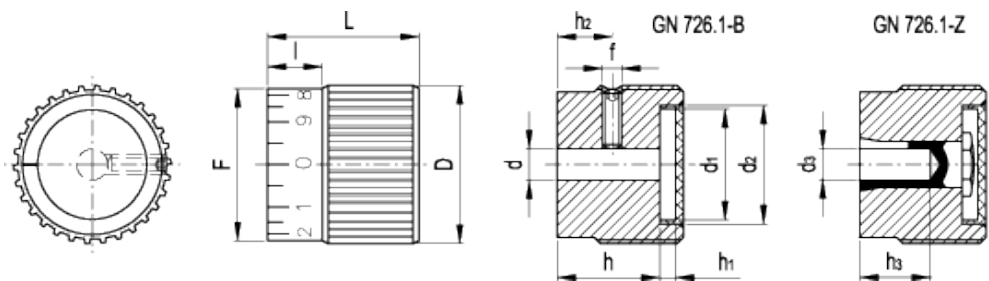


# GN 726.1

Knurled control knobs



## technical informations

### Material

Knurled aluminium profile, anodised.

- Execution A: triangular index (white perimeter).
- Execution B: plain surface.
- Execution S: white precision graduation. Numbering increases as the knob is turned clockwise, scale from 0 to 9 (20 diving marks).

Graduation and triangular index are laser-engraved: high-precision and perfect readability.

### Colour

Black.

### Cap

Acetal resin based (POM) technopolymer, light grey colour. Resistant to solvents, oils, greases and other chemical agents.

### Assembly

- Execution B: H8 reamed hole. Assembly by means of a stainless steel transversal grub screw with hexagon socket, supplied assembled. DIN 916 stainless steel pressure socket head screw for fitting to shaft (identification with No.1 grub screw).
- Execution Z: with collet (identification with No.2).

### Special executions on request (For sufficient quantities)

- For other numbering see [Graduations](#).
- On the surface of the cap words, marks, graphic symbols, etc... can be tampoprinted in colours.

Standard Elements	Main dimensions									Mounting hole				Weight
Description	D	L	F	I	d <sub>1</sub>	d <sub>2</sub>	h <sub>1</sub>	h <sub>2</sub>	f	d <sub>H8</sub>	h	d <sub>3</sub>	h <sub>3</sub>	g
GN 726.1-22-B5-A-1	22	22	20	8	14	16	4.3	12.5	M4	5	16	-	-	28
GN 726.1-22-B5-B-1	22	22	20	8	14	16	4.3	12.5	M4	5	16	-	-	28
GN 726.1-22-B5-S-1	22	22	20	8	14	16	4.3	12.5	M4	5	16	-	-	19
GN 726.1-27-B6-A-1	27	26	25	9	18	20	4.3	14	M4	6	20	-	-	32
GN 726.1-27-B6-B-1	27	26	25	9	18	20	4.3	14	M4	6	20	-	-	32
GN 726.1-27-B6-S-1	27	26	25	9	18	20	4.3	14	M4	6	20	-	-	32
GN 726.1-27-Z6-A-2	27	26	25	9	18	20	4.3	-	-	-	-	6	14	37
GN 726.1-27-Z6-B-2	27	26	25	9	18	20	4.3	-	-	-	-	6	14	37
GN 726.1-27-Z6-S-2	27	26	25	9	18	20	4.3	-	-	-	-	6	14	37
GN 726.1-34-B6-A-1	34	30	32	10	23	25	4.2	15	M5	6	24	-	-	59
GN 726.1-34-B6-B-1	34	30	32	10	23	25	4.2	15	M5	6	24	-	-	59
GN 726.1-34-B6-S-1	34	30	32	10	23	25	4.2	15	M5	6	24	-	-	59
GN 726.1-34-B8-A-1	34	30	32	10	23	25	4.2	15	M5	8	24	-	-	58
GN 726.1-34-B8-B-1	34	30	32	10	23	25	4.2	15	M5	8	24	-	-	58
GN 726.1-34-B8-S-1	34	30	32	10	23	25	4.2	15	M5	8	24	-	-	58
GN 726.1-34-Z8-A-2	34	30	32	10	23	25	4.2	-	-	-	-	8	17	65
GN 726.1-34-Z8-B-2	34	30	32	10	23	25	4.2	-	-	-	-	8	17	65
GN 726.1-34-Z8-S-2	34	30	32	10	23	25	4.2	-	-	-	-	8	17	65
GN 726.1-42-B8-A-1	42	34	40	11	30	32	4	16	M5	8	28	-	-	102
GN 726.1-42-B8-B-1	42	34	40	11	30	32	4	16	M5	8	28	-	-	102
GN 726.1-42-B8-S-1	42	34	40	11	30	32	4	16	M5	8	28	-	-	102
GN 726.1-42-B10-A-1	42	34	40	11	30	32	4	16	M5	10	28	-	-	103
GN 726.1-42-B10-B-1	42	34	40	11	30	32	4	16	M5	10	28	-	-	103
GN 726.1-42-B10-S-1	42	34	40	11	30	32	4	16	M5	10	28	-	-	103
GN 726.1-42-Z10-A-2	42	34	40	11	30	32	4	-	-	-	-	10	20	112
GN 726.1-42-Z10-B-2	42	34	40	11	30	32	4	-	-	-	-	10	20	112
GN 726.1-42-Z10-S-2	42	34	40	11	30	32	4	-	-	-	-	10	20	112

This product had the following design awards:



ELESA and GANTER models all rights reserved in accordance with the law. Always mention the source when reproducing our drawings.

STANDARD MACHINE ELEMENTS WORLDWIDE