

## Spring latches

Steel / Stainless Steel, for welding

### SPECIFICATION

#### Types

- Type **A**: Latch riveted, not removable
- Type **AU**: Latch screwed, removable

#### Version in Steel

Guide  
Steel precision casting **ST**  
blackened, weldable

Latch  
Steel precision casting  
zinc plated, blue passivated

Plunger pin  
Steel, zinc plated, blue passivated

Spring  
Stainless Steel AISI 316Ti

#### Version in Stainless Steel

Guide / Latch  
Stainless Steel precision casting **A4**  
weldable, AISI 316

Plunger pin  
Stainless Steel AISI 316

Spring  
Stainless Steel AISI 316Ti

Countersunk screw

- Steel, zinc plated (for ST)
- Stainless Steel A4 (for A4)

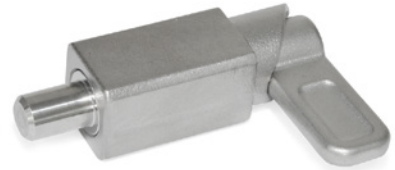
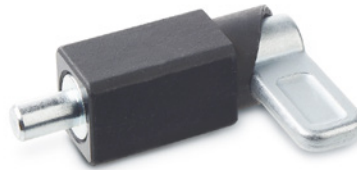
### INFORMATION

With spring latches GN 722.1, the plunger pin is retracted over the curve of the guide by a 180° turn of the latch. The notch at the upper end of the curve causes the latch to be held in place if the plunger pin needs to be kept temporarily from protruding. The **ST** version is designed for applications in steel construction, whereas the **A4** stainless steel version is suitable for use in particularly aggressive environments

The dimensional tolerances between plunger pin and guide are selected so that the functional reliability is guaranteed even after welding, applying a corrosion protection layer or in case of contamination.

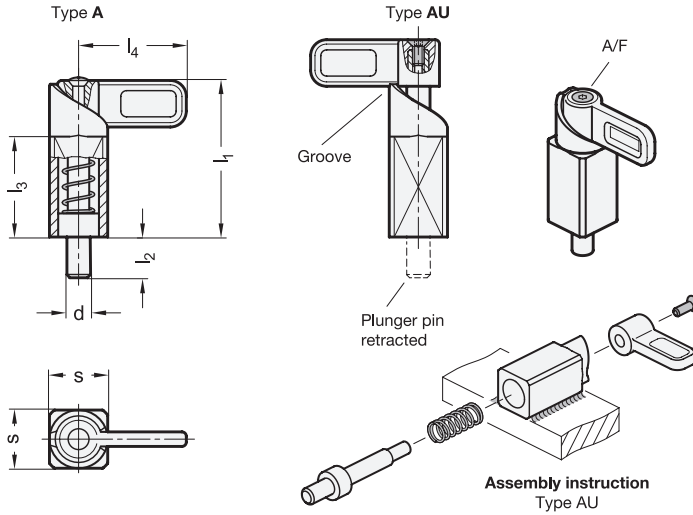
For fastening by welding, the unmounted type AU is particularly recommended to avoid changes to the microstructure of the material due to heating of the spring and plunger pin. In this case, the indexing plunger is assembled only after the surface treatment of the welded guide.

- Range of cam action indexing plungers (see page 738)



### TECHNICAL INFORMATION

- Stainless Steel characteristics (see page A26)
- Load rating information (see page A42)



GN 722.1-ST

Description	d Pin -0.05/-0.25 Bore +0.1/+0.3	s	l1 ≈	l2	l3	l4	A/F	Spring load in N ≈ initial	Spring load in N ≈ end	⚖
GN 722.1-8-20-A-ST	8	20	54	14	35	37	-	16	55	135
GN 722.1-10-20-A-ST	10	20	54	14	35	37	-	16	55	144
GN 722.1-12-20-A-ST	12	20	54	14	35	37	-	16	55	148
GN 722.1-14-20-A-ST	14	20	54	14	35	37	-	16	55	153
GN 722.1-16-30-A-ST	16	30	83	20	54	55	-	30	110	622
GN 722.1-20-30-A-ST	20	30	83	20	54	55	-	30	110	639
GN 722.1-8-20-AU-ST	8	20	54	14	35	37	2.5	16	55	139
GN 722.1-10-20-AU-ST	10	20	54	14	35	37	2.5	16	55	142
GN 722.1-12-20-AU-ST	12	20	54	14	35	37	2.5	16	55	146
GN 722.1-14-20-AU-ST	14	20	54	14	35	37	2.5	16	55	150
GN 722.1-16-30-AU-ST	16	30	83	20	54	55	4	30	110	618
GN 722.1-20-30-AU-ST	20	30	83	20	54	55	4	30	110	636

GN 722.1-A4

STAINLESS STEEL

Description	d Pin -0.05/-0.25 Bore +0.1/+0.3	s	l1 ≈	l2	l3	l4	A/F	Spring load in N ≈ initial	Spring load in N ≈ end	⚖
GN 722.1-8-20-A-A4	8	20	54	14	35	37	-	16	45	146
GN 722.1-10-20-A-A4	10	20	54	14	35	37	-	16	45	142
GN 722.1-12-20-A-A4	12	20	54	14	35	37	-	16	45	148
GN 722.1-14-20-A-A4	14	20	54	14	35	37	-	16	45	150
GN 722.1-16-30-A-A4	16	30	83	20	54	55	-	30	110	612
GN 722.1-20-30-A-A4	20	30	83	20	54	55	-	30	110	643
GN 722.1-8-20-AU-A4	8	20	54	14	35	37	2.5	16	45	161
GN 722.1-10-20-AU-A4	10	20	54	14	35	37	2.5	16	45	164
GN 722.1-12-20-AU-A4	12	20	54	14	35	37	2.5	16	45	168
GN 722.1-14-20-AU-A4	14	20	54	14	35	37	2.5	16	45	172
GN 722.1-16-30-AU-A4	16	30	83	20	54	55	4	30	110	641
GN 722.1-20-30-AU-A4	20	30	83	20	54	55	4	30	110	659

