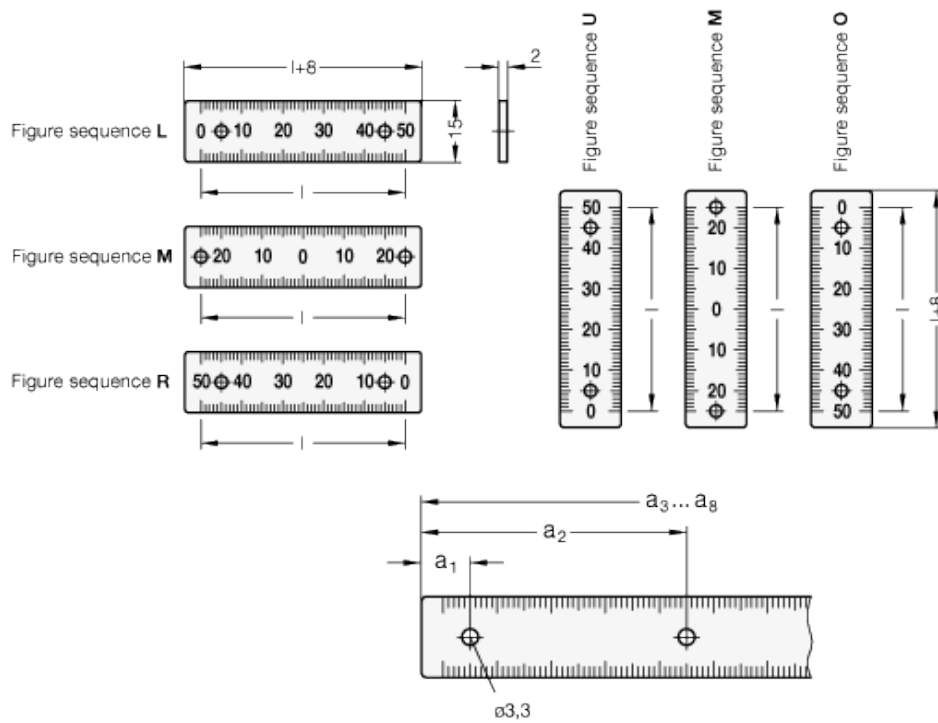
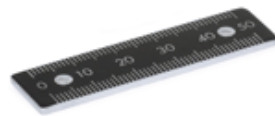


GN 711.2

Rulers



technical informations

Material

Aluminium, natural colour, anodized.

Black imprint with numbers and scale etched (i.e., aluminium coloured)

Imprint

Resistant to weak acids and lye solutions, and against solvents in the event of brief contact.

Standard versions available

- Version W: figures horizontally arranged (Figure sequences L,M,R).
- Version S: figures vertically arranged (Figure sequences U,M,O)

Identification no.

1 with mounting holes \varnothing 3.3.

On request

- self adhesive version

Standard Elements	Main dimensions										Weight
Description	l	Number bores	a _{1 ±0.1}	a _{2 ±0.1}	a _{3 ±0.1}	a _{4 ±0.1}	a _{5 ±0.1}	a _{6 ±0.1}	a _{7 ±0.1}	a _{8 ±0.1}	g
GN 711.2-AL-50-W-L-1	50	2	9	49	-	-	-	-	-	-	4
GN 711.2-AL-100-W-L-1	100	2	9	99	-	-	-	-	-	-	8
GN 711.2-AL-150-W-L-1	150	2	9	149	-	-	-	-	-	-	12
GN 711.2-AL-200-W-L-1	200	3	9	99	199	-	-	-	-	-	15
GN 711.2-AL-300-W-L-1	300	3	9	149	299	-	-	-	-	-	24
GN 711.2-AL-400-W-L-1	400	4	9	139	269	399	-	-	-	-	32
GN 711.2-AL-500-W-L-1	500	4	9	169	339	499	-	-	-	-	40
GN 711.2-AL-750*-W-L-1	750*	8	9	129	249	369	389	509	629	749	60
GN 711.2-AL-1000*-W-L-1	1000*	8	9	169	329	499	519	679	839	999	79
GN 711.2-AL-50-W-M-1	50	2	4	54	-	-	-	-	-	-	4
GN 711.2-AL-100-W-M-1	100	2	9	99	-	-	-	-	-	-	8
GN 711.2-AL-150-W-M-1	150	2	4	154	-	-	-	-	-	-	12
GN 711.2-AL-200-W-M-1	200	3	9	99	199	-	-	-	-	-	15
GN 711.2-AL-300-W-M-1	300	3	9	149	299	-	-	-	-	-	24
GN 711.2-AL-400-W-M-1	400	4	9	139	269	399	-	-	-	-	32
GN 711.2-AL-500-W-M-1	500	4	9	169	339	499	-	-	-	-	40
GN 711.2-AL-750*-W-M-1	750*	8	4	124	254	374	394	504	634	754	60
GN 711.2-AL-1000*-W-M-1	1000*	8	9	169	339	499	519	679	839	999	79
GN 711.2-AL-50-W-R-1	50	2	9	49	-	-	-	-	-	-	4
GN 711.2-AL-100-W-R-1	100	2	9	99	-	-	-	-	-	-	8
GN 711.2-AL-150-W-R-1	150	2	9	149	-	-	-	-	-	-	12
GN 711.2-AL-200-W-R-1	200	3	9	99	199	-	-	-	-	-	15
GN 711.2-AL-300-W-R-1	300	3	9	149	299	-	-	-	-	-	24
GN 711.2-AL-400-W-R-1	400	4	9	139	269	399	-	-	-	-	32
GN 711.2-AL-500-W-R-1	500	4	9	169	339	499	-	-	-	-	40
GN 711.2-AL-750*-W-R-1	750*	8	9	129	249	369	389	509	629	749	60
GN 711.2-AL-1000*-W-R-1	1000*	8	9	169	329	499	519	679	839	999	79
GN 711.2-AL-S-50-U-1	50	2	9	49	-	-	-	-	-	-	4
GN 711.2-AL-S-100-U-1	100	2	9	99	-	-	-	-	-	-	8
GN 711.2-AL-S-150-U-1	150	2	9	149	-	-	-	-	-	-	12
GN 711.2-AL-S-200-U-1	200	3	9	99	199	-	-	-	-	-	15
GN 711.2-AL-S-300-U-1	300	3	9	149	299	-	-	-	-	-	24
GN 711.2-AL-S-400-U-1	400	4	9	139	269	399	-	-	-	-	32

GN 711.2-AL-S-500-U-1	500	4	9	169	339	499	-	-	-	-	40
GN 711.2-AL-S-750*-U-1	750*	8	9	129	249	369	389	509	629	749	60
GN 711.2-AL-S-1000*-U-1	1000*	8	9	169	329	499	519	679	839	999	79
GN 711.2-AL-S-50-M-1	50	2	4	54	-	-	-	-	-	-	4
GN 711.2-AL-S-100-M-1	100	2	9	99	-	-	-	-	-	-	8
GN 711.2-AL-S-150-M-1	150	2	4	154	-	-	-	-	-	-	12
GN 711.2-AL-S-200-M-1	200	3	9	99	199	-	-	-	-	-	15
GN 711.2-AL-S-300-M-1	300	3	9	149	299	-	-	-	-	-	24
GN 711.2-AL-S-400-M-1	400	4	9	139	269	399	-	-	-	-	32
GN 711.2-AL-S-500-M-1	500	4	9	169	339	499	-	-	-	-	40
GN 711.2-AL-S-750*-M-1	750*	8	4	124	254	374	394	504	634	754	60
GN 711.2-AL-S-1000*-M-1	1000*	8	9	169	339	499	519	679	839	999	79
GN 711.2-AL-S-50-O-1	50	2	9	49	-	-	-	-	-	-	4
GN 711.2-AL-S-100-O-1	100	2	9	99	-	-	-	-	-	-	8
GN 711.2-AL-S-150-O-1	150	2	9	149	-	-	-	-	-	-	12
GN 711.2-AL-S-200-O-1	200	3	9	99	199	-	-	-	-	-	15
GN 711.2-AL-S-300-O-1	300	3	9	149	299	-	-	-	-	-	24
GN 711.2-AL-S-400-O-1	400	4	9	139	269	399	-	-	-	-	32
GN 711.2-AL-S-500-O-1	500	4	9	169	339	499	-	-	-	-	40
GN 711.2-AL-S-750*-O-1	750*	8	9	129	249	369	389	509	629	749	60
GN 711.2-AL-S-1000*-O-1	1000*	8	9	169	329	499	519	679	839	999	79

* This lengths consists of 2 parts.



STANDARD MACHINE ELEMENTS WORLDWIDE