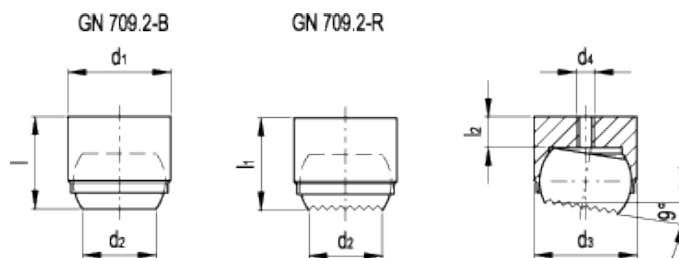


GN 709.2

Clamping pads



technical informations

Material

Case hardened phosphated steel.

Ball

Blank hardened steel.

Standard executions available

- Execution B: smooth contact face.
- Execution R: serrated contact face.

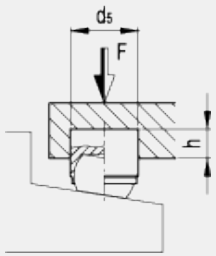
Special executions on request (For sufficient quantities)

Serrated hard metal insert.

Features and applications

Clamping pads GN 709.2 are used as mobile supports or as spring plungers for clamping workpieces. They can also be used as a back stop.
The ball is limited to an angular movement of 9° only.

Application example



Standard Elements	Main dimensions									Max static load	Weight
Description	$d_{1\ m6}$	d_2	d_3	d_4	d_5	$l_{\pm 0.02}$	$l_{1\ \pm 0.1}$	$l_{2\ max}$	h_{min}	[KN]	g
GN 709.2-12-B	12	7.2	10	M3	12	11	-	3.2	6	10	8
GN 709.2-18-B	18	10.5	16	M4	18	17	-	4	8	25	30
GN 709.2-28-B	28	20	25	M5	28	25	-	5.5	13	90	80
GN 709.2-12-R	12	7.2	10	M3	12	-	11	3.2	6	10	10
GN 709.2-18-R	18	10.5	16	M4	18	-	17	4	8	25	30
GN 709.2-28-R	28	20	25	M5	28	-	25	5.5	13	90	80



STANDARD MACHINE ELEMENTS WORLDWIDE