

Stainless Steel-Sensor holders

for shaft collars GN 7062.1 / GN 7072.1

SPECIFICATION

Type

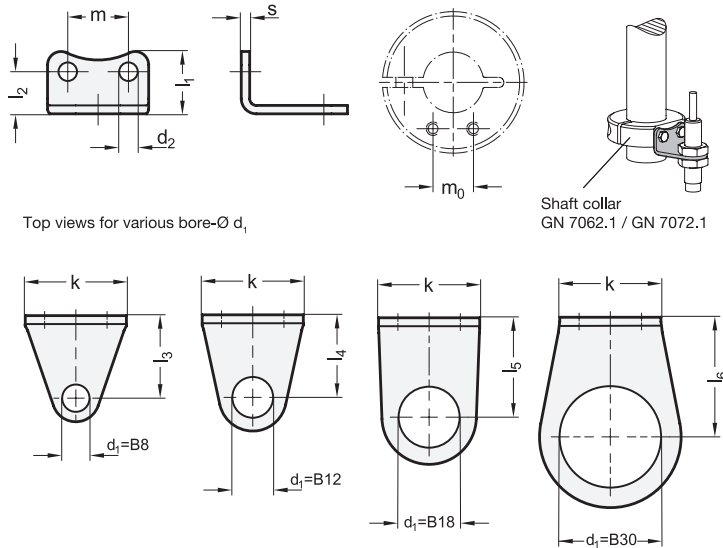
- Type L: angled
Stainless Steel AISI 304
matte shot-blasted

INFORMATION

The Stainless Steel-Sensor holders GN 7062.10 are designed for holding sensors attached with two lock nuts.
The holes d_2 match the extension-tapped holes of the shaft collars GN 7062.1 (see page) / GN 7072.1 (see page) in measurement and facilitate axial or radial positioning of sensors.

TECHNICAL INFORMATION

- Stainless Steel characteristics (see page A26)



Top views for various bore- $\varnothing d_1$

Shaft collar
GN 7062.1 / GN 7072.1

GN 7062.10

STAINLESS STEEL

Description	m0	d1 +0.1	k	d2	l1	l2	l3	l4	l5	l6	m	s	⚖
GN 7062.10-B8-14-L	8	B 8	14	3.5	13	9.5	15	-	-	-	8	2	5
GN 7062.10-B8-18-L	10	B 8	18	4.5	14.5	10.5	19	-	-	-	10	2	7
GN 7062.10-B8-23-L	12	B 8	23	4.5	17	12.5	19	-	-	-	12	2.5	12
GN 7062.10-B8-30-L	18	B 8	30	5.5	18.5	12.5	24.5	-	-	-	18	2.5	18
GN 7062.10-B12-14-L	8	B 12	14	3.5	13	9.5	-	19	-	-	8	2	7
GN 7062.10-B12-18-L	10	B 12	18	4.5	14.5	10.5	-	24.5	-	-	10	2	10
GN 7062.10-B12-23-L	12	B 12	23	4.5	17	12.5	-	24.5	-	-	12	2.5	16
GN 7062.10-B12-30-L	18	B 12	30	5.5	18.5	12.5	-	24.5	-	-	18	2.5	19
GN 7062.10-B18-18-L	10	B 18	18	4.5	14.5	10.5	-	-	29.5	-	10	2	13
GN 7062.10-B18-23-L	12	B 18	23	4.5	17	12.5	-	-	29.5	-	12	2.5	20
GN 7062.10-B18-30-L	18	B 18	30	5.5	18.5	12.5	-	-	29.5	-	18	2.5	24
GN 7062.10-B30-23-L	12	B 30	23	4.5	17	12.5	-	-	-	35.5	12	2.5	27
GN 7062.10-B30-30-L	18	B 30	30	5.5	18.5	12.5	-	-	-	35.5	18	2.5	31