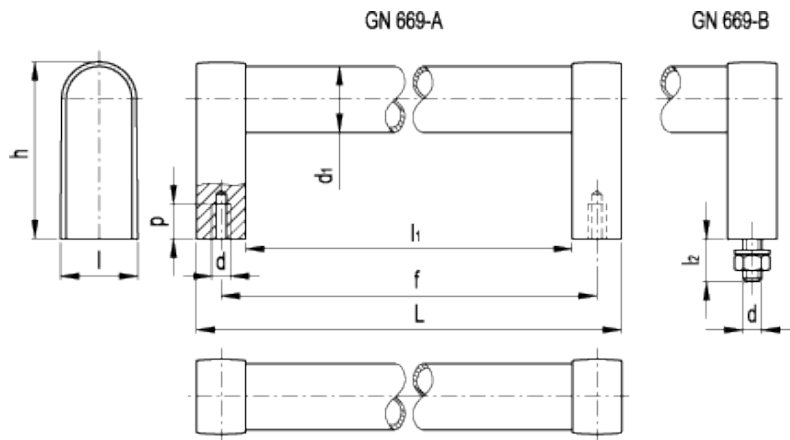


# GN 669

Tubular handles



## technical informations

### Tube and handle shanks

Aluminium.

- Execution EL: anodised, natural colour, matte finish, handle shanks in grey colour.
- Execution SW: RAL 9005 black colour, matte finish, epoxy resin coating, handle shanks in black colour.

### Handle shank covers

Polyamide based (PA) technopolymer, black colour, matte finish. Resistant to solvents, oils, greases and other chemical agents.

### Assembly

- Execution A: back mounting by means of two M8 screws, tapped blind holes.
- Execution B: front mounting by means of DIN 912-M8x75 zinc-plated steel socket head screws, ISO 4032 zinc-plated steel hexagon nuts and DIN 125 zinc-plated steel washers.

### Special executions on request (For sufficient quantities)

- Handle shanks with zinc-plated threaded pin, lock nuts and washers for front mounting (execution B).
- Handle shanks with bores for the connection to other tubes, even to curved tubes.
- Tubes, handle shanks, handle shanks covers in different colours.

- Different lengths.

### Applications

GN 669 tubular handles are particularly suitable for handrail functions.

Standard Elements	Main dimensions						Mounting holes			Weight
Description	L	f	h	l	l <sub>1</sub>	d <sub>1</sub>	d	p <sub>min</sub>	l <sub>2</sub>	g
GN 669-28-200-A-*	220	200	76	32	180	28	M8	15	-	180
GN 669-28-200-B-*	220	200	76	32	180	28	M8	-	20	210
GN 669-28-250-A-*	270	250	76	32	230	28	M8	15	-	210
GN 669-28-250-B-*	270	250	76	32	230	28	M8	-	20	240
GN 669-28-300-A-*	320	300	76	32	280	28	M8	15	-	220
GN 669-28-300-B-*	320	300	76	32	280	28	M8	-	20	250
GN 669-28-400-A-*	420	400	76	32	380	28	M8	15	-	270
GN 669-28-400-B-*	420	400	76	32	380	28	M8	-	20	300
GN 669-28-500-A-*	520	500	76	32	480	28	M8	15	-	290
GN 669-28-500-B-*	520	500	76	32	480	28	M8	-	20	325
GN 669-28-600-A-*	620	600	76	32	580	28	M8	15	-	340
GN 669-28-600-B-*	620	600	76	32	580	28	M8	-	20	370

\* Complete the description of the standard item needed by adding the index of the material of the handle: EL (natural anodised aluminium), SW (black epoxy resin).



ELESA and GANTER models all rights reserved in accordance with the law. Always mention the source when reproducing our drawings.

STANDARD MACHINE ELEMENTS WORLDWIDE