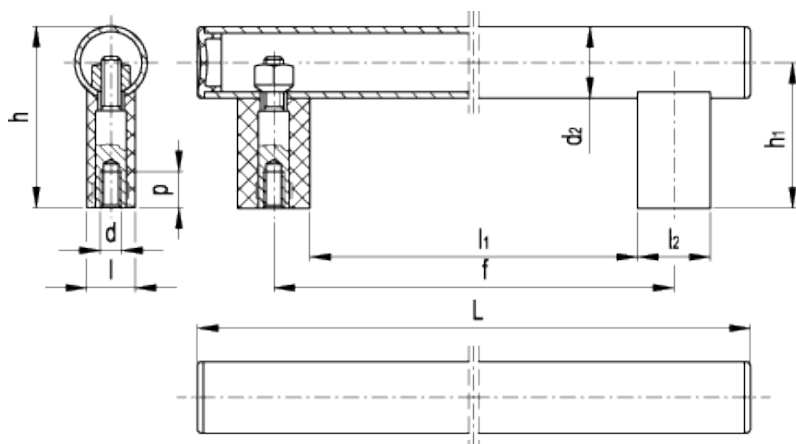


GN 666

Tubular handles



technical informations

Tube

Aluminium, wall thickness 1.5mm.

Handle shanks

Polyamide based (PA) technopolymer, glas fibre reinforced, temperature resistant up to 100 °C.

Tube end caps

Polyamide based (PA) technopolymer, glas fibre reinforced, temperature resistant up to 100 °C.

Finish

- Version SW:

Tube: RAL 9005 black, matte finish, epoxy resin coating.

Handle shanks: black, matte finish.

Tube end caps: black, matte finish.

- Version EL:

Tube: anodised, natural colour.

Handle shanks: black, matte finish.

Tube end caps: black, matte finish.

- Version ELG:
Tube: anodised, natural colour.
Handle shanks: light grey, matte finish.
Tube end caps: light grey, matte finish.

Assembly

Back mounting, zinc-plated steel threaded bushings.

Special executions on request (for sufficient quantities)

Different lengths.

Features and applications

GN 666 tubular handles offer an even more extensive size range for any application which require mounting from the back.

Standard Elements	Main dimensions								Mounting holes		Weight
Description	L	f	h	l	l ₁	l ₂	h ₁	d ₂	d	p _{min}	g
GN 666-30-M6-200-SW	265	200	75	18	170	30	60	30	M6	12	219
GN 666-30-M6-200-EL	265	200	75	18	170	30	60	30	M6	12	213
GN 666-30-M6-200-ELG	265	200	75	18	170	30	60	30	M6	12	213
GN 666-30-M8-200-SW	265	200	75	18	170	30	60	30	M8	15	229
GN 666-30-M8-200-EL	265	200	75	18	170	30	60	30	M8	15	205
GN 666-30-M8-200-ELG	265	200	75	18	170	30	60	30	M8	15	229
GN 666-30-M6-250-SW	315	250	75	18	220	30	60	30	M6	12	240
GN 666-30-M6-250-EL	315	250	75	18	220	30	60	30	M6	12	220
GN 666-30-M6-250-ELG	315	250	75	18	220	30	60	30	M6	12	220
GN 666-30-M8-250-SW	315	250	75	18	220	30	60	30	M8	15	220
GN 666-30-M8-250-EL	315	250	75	18	220	30	60	30	M8	15	248
GN 666-30-M8-250-ELG	315	250	75	18	220	30	60	30	M8	15	248
GN 666-30-M6-300-SW	365	300	75	18	270	30	60	30	M6	12	260
GN 666-30-M6-300-EL	365	300	75	18	270	30	60	30	M6	12	251
GN 666-30-M6-300-ELG	365	300	75	18	270	30	60	30	M6	12	250
GN 666-30-M8-300-SW	365	300	75	18	270	30	60	30	M8	15	265
GN 666-30-M8-300-EL	365	300	75	18	27	30	60	30	M8	15	265
GN 666-30-M8-300-ELG	365	300	75	18	270	30	60	30	M8	15	240
GN 666-30-M6-350-SW	415	350	75	18	320	30	60	30	M6	12	265
GN 666-30-M6-350-EL	415	350	75	18	320	30	60	30	M6	12	265
GN 666-30-M6-350-ELG	415	350	75	18	320	30	60	30	M6	12	265
GN 666-30-M8-350-SW	415	350	75	18	320	30	60	30	M8	15	265
GN 666-30-M8-350-EL	415	350	75	18	320	30	60	30	M8	15	265
GN 666-30-M8-350-ELG	415	350	75	18	320	30	60	30	M8	15	265
GN 666-30-M6-400-SW	465	400	75	18	370	30	60	30	M6	12	300
GN 666-30-M6-400-EL	465	400	75	18	370	30	60	30	M6	12	280
GN 666-30-M6-400-ELG	465	400	75	18	370	30	60	30	M6	12	280
GN 666-30-M8-400-SW	465	400	75	18	370	30	60	30	M8	15	300
GN 666-30-M8-400-EL	465	400	75	18	370	30	60	30	M6	12	300
GN 666-30-M8-400-ELG	465	400	75	18	370	30	60	30	M8	15	300
GN 666-30-M6-500-SW	565	500	75	18	470	30	60	30	M6	12	315
GN 666-30-M6-500-EL	565	500	75	18	470	30	60	30	M6	12	315
GN 666-30-M6-500-ELG	565	500	75	18	470	30	60	30	M6	12	315
GN 666-30-M8-500-SW	565	500	75	18	470	30	60	30	M8	15	340
GN 666-30-M8-500-EL	565	500	75	18	470	30	60	30	M8	15	340
GN 666-30-M8-500-ELG	565	500	75	18	470	30	60	30	M8	15	340
GN 666-30-M6-600-SW	665	600	75	18	570	30	60	30	M6	12	365
GN 666-30-M6-600-EL	665	600	75	18	570	30	60	30	M6	12	380
GN 666-30-M6-600-ELG	665	600	75	18	570	30	60	30	M6	12	350
GN 666-30-M8-600-SW	665	600	75	18	570	30	60	30	M8	15	365
GN 666-30-M8-600-EL	665	600	75	18	570	30	60	30	M8	15	380
GN 666-30-M8-600-ELG	665	600	75	18	570	30	60	30	M8	15	380



STANDARD MACHINE ELEMENTS WORLDWIDE