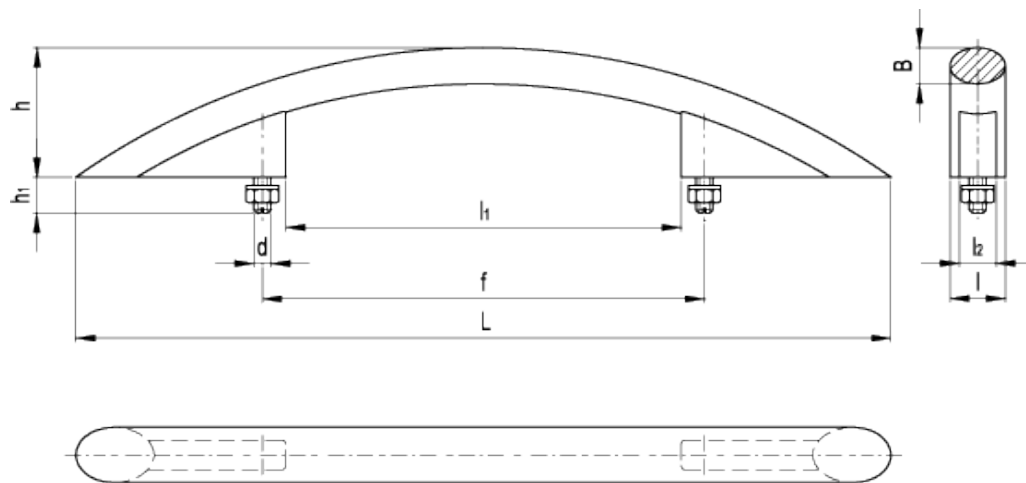


# GN 665

Arch-shaped handles



## technical informations

### Material

Aluminium. Round cross section bar.

- Version SW: RAL 9005 black colour, matte finish, epoxy resin coating.
- Version SR: silver, RAL 9006, matte finish, epoxy resin coating.

### Handle shanks

Zinc alloy die-cast, RAL 9006 grey colour, epoxy resin coating.

### Assembly

Zinc-plated steel screws and washers supplied. Two reference pins, between the handle shanks and the round cross section bar, guarantee an exact positioning.

### Special executions on request (For sufficient quantities)

- Different lengths.
- Surfaces with different finishes.

Standard Elements	Main dimensions							Screws		Weight
Description	l	f <sub>±0.2</sub>	L <sub>≈</sub>	B	l <sub>1</sub>	l <sub>2</sub>	h <sub>-1</sub>	d	h <sub>1≈</sub>	g
GN 665-26-350-SW	26	350	526	17	328	14	69	M8	17	621
GN 665-26-350-SR	26	350	526	17	328	14	69	M8	17	621
GN 665-26-450-SW	26	450	632	17	428	14	69	M8	20	699
GN 665-26-450-SR	26	450	632	17	428	14	69	M8	20	699



ELESA-GANTER models all rights reserved in accordance with the law. Always mention the source when reproducing our drawings.

STANDARD MACHINE ELEMENTS WORLDWIDE