

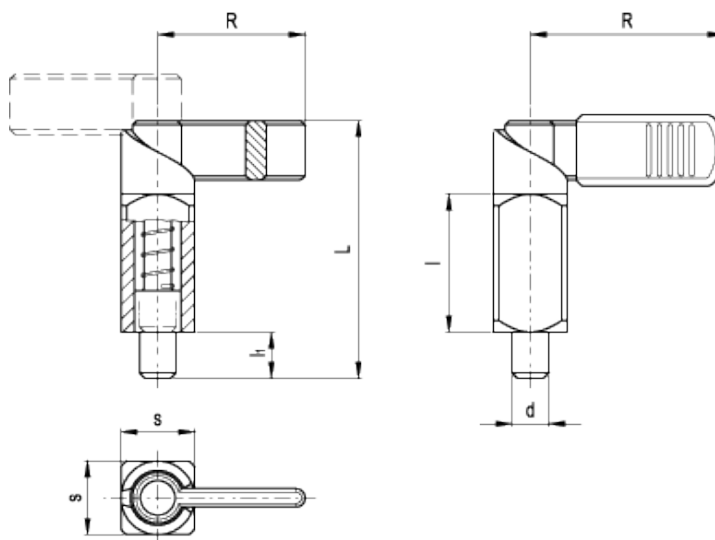
# GN 612.3

Lever indexing plungers with rest position



GN 612.3-A

GN 612.3-B



## technical informations

### Material

Weldable steel.

### Plunger

Nitrided steel. Suggested matching hole in H7 tolerance.

### Plastic cover

Polyamide based technopolymer (PA), black colour, matte finish.

### Standard executions available

- Execution A: without plastic cover.

- Execution B: with plastic cover.

### Features and applications

Cam action indexing plungers GN 612.3 are used in cases where the locking pin must not protrude all the time. By rotating the lock through 180° the locking pin withdraws itself.

A notch is provided in either position to prevent the lock from rotating.

The square body can therefore be welded in any required position. In order to prevent a change in the spring load by the transferred heat we recommend spot welding the plunger body.

Standard Elements	Main dimensions						Spring pressure		Weight
Description	s	d <sub>-0.02 -0.04</sub> Bore H7	l	l <sub>1</sub>	R	L	Preload [N-]	Max. load [N-]	g
GN 612.3-6-16-A	6	16x16	30	10	32	56	12	32	76
GN 612.3-8-16-A	8	16x16	30	10	32	56	12	32	80
GN 612.3-8-20-A	8	20x20	38	12	37	69	21	58	151
GN 612.3-10-16-A	10	16x16	30	10	32	56	12	32	80
GN 612.3-10-20-A	10	20x20	38	12	37	69	21	58	153
GN 612.3-12-20-A	12	20x20	38	12	37	69	21	58	158
GN 612.3-6-16-B	6	16x16	30	10	42	56	12	32	78
GN 612.3-8-16-B	8	16x16	30	10	42	56	12	32	80
GN 612.3-8-20-B	8	20x20	38	12	52	69	21	58	154
GN 612.3-10-16-B	10	16x16	30	10	42	56	12	32	82
GN 612.3-10-20-B	10	20x20	38	12	52	69	21	58	157
GN 612.3-12-20-B	12	20x20	38	12	52	69	21	58	174



STANDARD MACHINE ELEMENTS WORLDWIDE