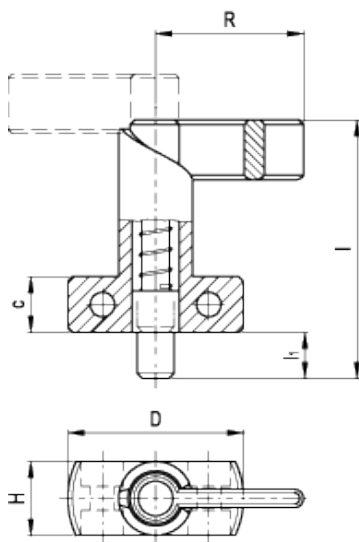


# GN 612.2

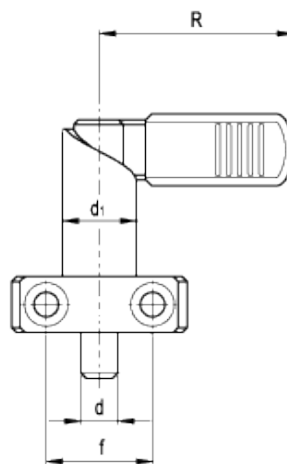
Cam action indexing plungers



GN 612.2-A



GN 612.2-B



## technical informations

### Material

Black oxide steel

### Plunger

Nitrided steel. Suggested matching hole in H7 tolerance.

### Plastic cover

Polyamide based technopolymer (PA), black colour, matte finish.

### Standard executions available

- Execution A: without plastic cover.

- Execution B: with plastic cover.

### Features and applications

Cam action indexing plungers GN 612.2 are used in cases where the locking pin must not protrude all the time. By rotating the lock through 180° the locking pin withdraws itself.  
A notch is provided in either position to prevent the lock from rotating.

| Standard Elements | Main dimensions         |       |    |    |    |    |    |       |    | Spring pressure |                   | Weight |
|-------------------|-------------------------|-------|----|----|----|----|----|-------|----|-----------------|-------------------|--------|
| Description       | $d_{0-0.05}$<br>Bore H7 | $d_1$ | D  | H  | f  | c  | l  | $l_1$ | R  | Preload<br>[N-] | Max. load<br>[N-] | g      |
| GN 612.2-6-16-A   | 6                       | 16    | 35 | 16 | 20 | 12 | 56 | 10    | 32 | 12              | 32                | 82     |
| GN 612.2-8-16-A   | 8                       | 16    | 35 | 16 | 20 | 12 | 56 | 10    | 32 | 12              | 32                | 84     |
| GN 612.2-8-20-A   | 8                       | 20    | 40 | 20 | 22 | 15 | 69 | 12    | 37 | 21              | 58                | 167    |
| GN 612.2-10-16-A  | 10                      | 16    | 35 | 16 | 20 | 12 | 56 | 10    | 32 | 12              | 32                | 86     |
| GN 612.2-10-20-A  | 10                      | 20    | 40 | 20 | 22 | 15 | 69 | 12    | 37 | 21              | 58                | 169    |
| GN 612.2-12-20-A  | 12                      | 20    | 40 | 20 | 22 | 15 | 69 | 12    | 37 | 21              | 58                | 170    |
| GN 612.2-6-16-B   | 6                       | 16    | 35 | 16 | 20 | 12 | 56 | 10    | 42 | 12              | 32                | 85     |
| GN 612.2-8-16-B   | 8                       | 16    | 35 | 16 | 20 | 12 | 56 | 10    | 42 | 12              | 32                | 86     |
| GN 612.2-8-20-B   | 8                       | 20    | 40 | 20 | 22 | 15 | 69 | 12    | 52 | 21              | 58                | 170    |
| GN 612.2-10-16-B  | 10                      | 16    | 35 | 16 | 20 | 12 | 56 | 10    | 42 | 12              | 32                | 90     |
| GN 612.2-10-20-B  | 10                      | 20    | 40 | 20 | 22 | 15 | 69 | 12    | 52 | 21              | 58                | 173    |
| GN 612.2-12-20-B  | 12                      | 20    | 40 | 20 | 22 | 15 | 69 | 12    | 52 | 21              | 58                | 180    |



STANDARD MACHINE ELEMENTS WORLDWIDE