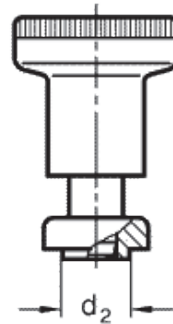
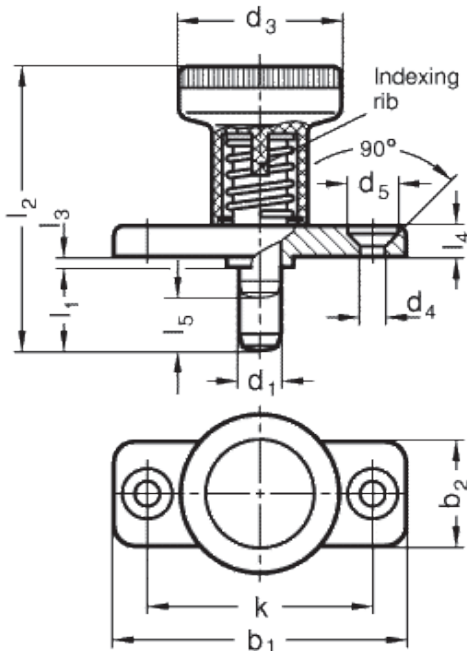


GN 608.6

Indexing plungers with flange and rest position



INOX
Stainless Steel



with plunger in rest position
(if $l_1 = d_1$)



technical informations

Body with flange

Zinc-plated die-cast zinc-alloy with two holes for assembly with countersunk head screws.

Plunger

AISI 303 stainless steel, chemically nickel plated.
Suggested matching hole in H7 tolerance.

"Push/Pull" knurled knob

High resilience polyamide based (PA) technopolymer, black colour, matte finish. Resistant to solvents, oils, greases and other chemical agents.

Applications

GN 608.6 indexing plungers with flange and rest position have compact dimensions and are used on thin metal sheets and where the plunger needs to be locked in the retracted position.

| Standard Elements | Main dimensions | | | | | | | | | | | Spring pressure in N ≈ | | Axial load | Weight | | |
|-------------------|----------------------------|----------------|----------------|----------------|---------------------------|----------------|----------------|----------------|----|----------------|----------------------|------------------------|----------------|--------------|----------------|-----|----|
| Description | d ₁ -0.02/-0.04 | l ₁ | b ₁ | b ₂ | d ₂ -0.02/-0.1 | d ₃ | d ₄ | d ₅ | k | l ₂ | l ₃ -0.15 | l ₄ | l ₅ | Preload [N~] | Max. load [N~] | [N] | g |
| GN 608.6-6-6 | 6 | 6 | 40 | 18 | 10 | 25 | 4.3 | 8.3 | 30 | 37 | 2.5 | 4.5 | 6 | 8.5 | 22 | 400 | 23 |
| GN 608.6-6-14 | 6 | 14 | 40 | 18 | 10 | 25 | 4.3 | 8.3 | 30 | 45 | 2.5 | 4.5 | 6 | 8.5 | 22 | 400 | 39 |
| GN 608.6-8-8 | 8 | 8 | 46 | 20 | 12 | 31 | 5.3 | 10.4 | 34 | 44 | 2.5 | 5.5 | 8 | 15.5 | 28 | 500 | 58 |
| GN 608.6-8-18 | 8 | 18 | 46 | 20 | 12 | 31 | 5.3 | 10.4 | 34 | 54 | 2.5 | 5.5 | 8 | 15.5 | 28 | 500 | 63 |



STANDARD MACHINE ELEMENTS WORLDWIDE