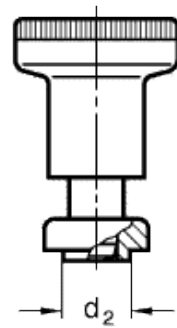
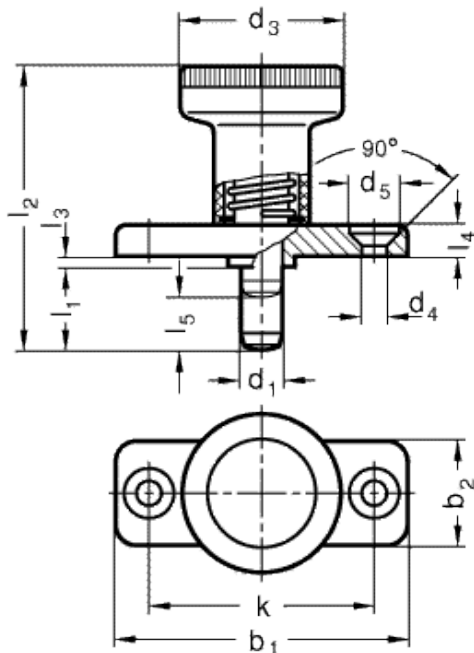


# GN 608.5

Indexing plungers with flange



INOX  
Stainless Steel



Plunger retracted  
(if  $l_1 = d_1$ )



## technical informations

### Body with flange

Zinc-plated die-cast zinc-alloy with two holes for assembly with countersunk head screws.

### Plunger

AISI 303 stainless steel, chemically nickel plated. Suggested matching hole in H7 tolerance.

"Push/Pull" knurled knob

High resilience polyamide based (PA) technopolymer, black colour, matte finish. Resistant to solvents, oils, greases and other chemical agents.

*Applications*

GN 608.5 indexing plungers with flange have compact dimensions and are used on thin metal sheets.

Standard Elements	Main dimensions											Spring pressure in N ≈		Axial load	Weight		
Description	$d_1 -0.02/-0.04$	$l_1$	$b_1$	$b_2$	$d_2 -0.02/-0.1$	$d_3$	$d_4$	$d_5$	$k$	$l_2$	$l_3 -0.15$	$l_4$	$l_5$	Preload [N~]	Max. load [N~]	[N]	g
GN 608.5-6-6	6	6	40	18	10	25	4.3	8.3	30	37	2.5	4.5	6	8.5	22	400	26
GN 608.5-6-14	6	14	40	18	10	25	4.3	8.3	30	45	2.5	4.5	6	8.5	22	400	38
GN 608.5-8-8	8	8	46	20	12	31	5.3	10.4	34	44	2.5	5.5	8	15.5	28	500	59
GN 608.5-8-18	8	18	46	20	12	31	5.3	10.4	34	54	2.5	5.5	8	15.5	28	500	62



STANDARD MACHINE ELEMENTS WORLDWIDE