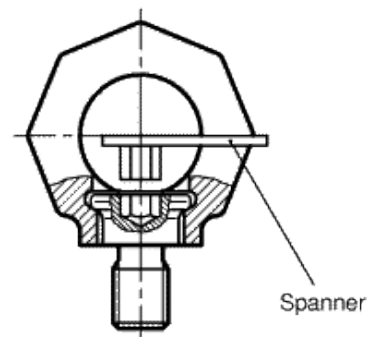
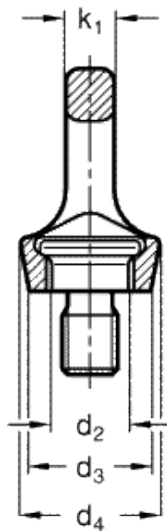
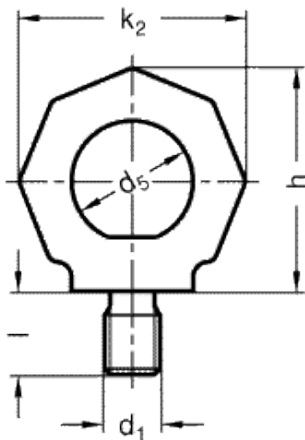


GN 581

Lifting eye bolts (rotating)



technical informations

Body

High-tensile forged tempered steel with pink plastic surface coating, 100% electro-magnetic tensile tested to EN 1677.

- Type B: with spanner.
- Type A: without spanner.

Bolt

Steel, class 10.9 (tensile strength 1000 N/mm²), 100% electro magnetic tensile tested.

Features and applications

The lifting eye bolts GN 581 are mounted in rotating bearings, allowing the direction of the force action to be adjusted and preventing inadvertent loosening or overturning (as potentially possible in lifting eye bolts DIN 580).

Lifting eye bolts GN 581 offer a high load carrying capacity and they are tested to meet safety standards (safety factor 4).

The rated load carrying capacity listed in the above table is clearly marked on the ring. It applies to the most unfavourable load application of the load types listed opposite.

Lifting eye bolts GN 581 comply with Mechanical Engineering Directive 2006 / 42 / EG and are BG tested.

The hexagon socket bolt cannot be removed from the ring.

Type B is suitable for assembly without the need to use tools: inserting the spanner in the hexagon socket of the bolt allows the bolt to be turned in and out by hand.

Application and assembly information

The loads given in brackets refer to the load capacity of the corresponding lifting eye bolt DIN 580. If such a value is not indicated the use of the lifting eye bolts DIN 580 is not permitted!

The bolt-on surface for the lifting eye bolts GN 581 must be plane and at a right angle to the threaded borehole; the countersinking must be \leq the nominal diameter of the thread.

Screwed in, the collar of the screw must make firm contact (do not use washers) and the eye bolt must rotate freely by 360° .

Before applying the load, turn the lifting eye bolt in the direction of the force. The lifting eye bolt is not suitable for frequent rotation cycles under load.

The specified load values apply for a minimum screw-in length of $1 \times$ nominal thread diameter in steel with a minimum tensile strength of 37 kp/mm², at an ambient temperature of -40°C to $+100^\circ\text{C}$. Load-bearing capacity under different conditions upon request.

Operating instructions with more details and specifications are included with every delivery.

Method of mounting										
Number	1	1	2	2	2	2	2	3 and 4	3 and 4	3 and 4
Angles of inclination	0°	90°	0°	90°	$0 \div 45^\circ$	$45 \div 60^\circ$	asymm.	$0 \div 45^\circ$	$45 \div 60^\circ$	asymm.
Factor	1	1	2	2	1,4	1	1	2,1	1,5	1
M 8	1,00 [0,14]	0,40 t	2,00 [0,28]	0,80 t	0,56 [0,10]	0,40 t	0,40 t	0,84 t	0,60 t	0,40 t
M 10	1,00 [0,23]	0,40 t	2,00 [0,46]	0,80 t	0,56 [0,17]	0,40 t	0,40 t	0,84 t	0,60 t	0,40 t
M 12	2,00 [0,34]	0,75 t	4,00 [0,68]	1,50 t	1,00 [0,24]	0,75 t	0,75 t	1,60 t	1,12 t	0,75 t
M 16	4,00 [0,70]	1,50 t	8,00 [1,40]	3,00 t	2,10 [0,50]	1,50 t	1,50 t	3,15 t	2,25 t	1,50 t
M 20	6,00 [1,20]	2,30 t	12,00 [2,40]	4,60 t	3,22 [0,86]	2,30 t	2,30 t	4,83 t	3,45 t	2,30 t
M 24	8,00 [1,80]	3,20 t	16,00 [3,60]	6,40 t	4,48 [1,29]	3,20 t	3,20 t	6,70 t	4,80 t	3,20 t
M 30	12,00 [3,20]	4,50 t	24,00 [6,40]	9,00 t	6,30 [2,30]	4,50 t	4,50 t	9,40 t	6,70 t	4,50 t
M 36	16,00 [4,60]	7,00 t	32,00 [9,20]	14,00 t	9,80 [3,30]	7,00 t	7,00 t	14,70 t	10,50 t	7,00 t

Standard Elements	Main dimensions										Nominal load	Weight g
	Description	d ₁	d ₂	d ₃	d ₄	d ₅	h	k ₁	k ₂	l		
GN 581-M6-A	M6	13	23	28	20	37	7	37	9	0.1 t (1.0 kN)	-	
GN 581-M8-A	M8	16	25	30	25	45	9	47	12	0.3 t (3 kN)	100	
GN 581-M10-A	M10	16	25	30	25	46	9	47	15	0.4 t (4 kN)	120	
GN 581-M12-A	M12	20	30	34	30	55	10	56	18	0.75 t (7.5 kN)	180	
GN 581-M16-A	M16	23.5	36	40	35	64	13	65	24	1.5 t (15 kN)	320	
GN 581-M20-A	M20	29	41	50	40	75	16	76	30	2.3 t (23 kN)	490	
GN 581-M24-A	M24	35	51	60	49	90	19	92	36	3.2 t (32 kN)	900	
GN 581-M30-A	M30	44	66	75	60	113	24	114	45	4.5 t (45 kN)	1650	
GN 581-M36-A	M36	53	75	90	72	135	29	135	54	7.0 t (70 kN)	3100	
GN 581-M6-B	M6	13	23	28	20	37	7	37	9	0.1 t (1.0 kN)	-	
GN 581-M8-B	M8	16	25	30	25	46	9	47	12	0.3 t (4 kN)	115	
GN 581-M10-B	M10	16	25	30	25	46	9	47	15	0.4 t (4 kN)	130	
GN 581-M12-B	M12	20	30	34	30	55	10	56	18	0.75 t (7.5 kN)	190	
GN 581-M16-B	M16	23.5	36	40	35	64	13	65	24	1.5 t (15 kN)	340	
GN 581-M20-B	M20	29	41	50	40	75	16	76	30	2.3 t (23 kN)	555	
GN 581-M24-B	M24	35	51	60	49	90	19	92	36	3.2 t (32 kN)	950	

GN 581-M30-B	M30	44	66	75	60	113	24	114	45	4.5 t (45 kN)	1860
GN 581-M36-B	M36	53	75	90	72	135	29	135	54	7.0 t (70 kN)	3040



STANDARD MACHINE ELEMENTS WORLDWIDE