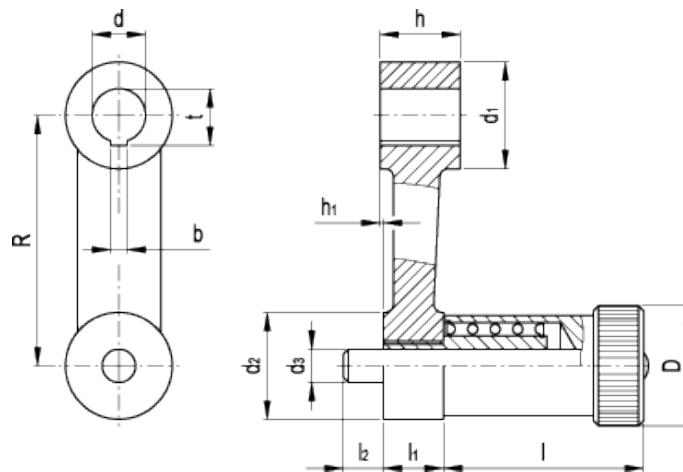


GN 558

Control levers
with positioning and rest pin



technical informations

Material

Deburred nodular cast iron, sandblasted matte finish.

Assembly

- Execution B: hub with plain hole.
- Execution K: hub with H7 reamed hole and keyway in compliance with [DIN 6885/2 P9 tolerance](#).

Cylindrical handle

Black-oxide steel.

Positioning and rest pin

Hardened steel.

Features and applications

GN 558 control levers are normally used for positioning shafts in pre-determined positions.
The levers can also be supplied not assembled.

Standard Elements	Main dimensions									Mounting hole				Weight
Description	R	D	h ₁	d ₁	d ₂	d ₃ ^{-0.02 -0.04}	l	l ₁	l ₂	d _{H7}	b _{P9}	t	h	g
GN 558-75-B16	75	32	1	32	28	10	60	18	12	16	-	-	24	544
GN 558-75-K16	75	32	1	32	28	10	60	18	12	16	5	17.3	24	537
GN 558-90-B18	90	32	1	34	28	10	60	18	12	18	-	-	26	588
GN 558-90-K18	90	32	1	34	28	10	60	18	12	18	6	19.7	26	583
GN 558-110-B20	110	32	1	36	28	10	60	18	12	20	-	-	30	694
GN 558-110-K20	110	32	1	36	28	10	60	18	12	20	6	21.7	30	689
GN 558-135-B22	135	32	1	42	28	10	60	18	12	22	-	-	32	823
GN 558-135-K22	135	32	1	42	28	10	60	18	12	22	6	23.7	32	818
GN 558-165-B24	165	32	1	44	28	10	60	18	12	24	-	-	36	994
GN 558-165-K24	165	32	1	44	28	10	60	18	12	24	8	25.7	36	988



ELESA and GANTER models all rights reserved in accordance with the law. Always mention the source when reproducing our drawings.

STANDARD MACHINE ELEMENTS WORLDWIDE