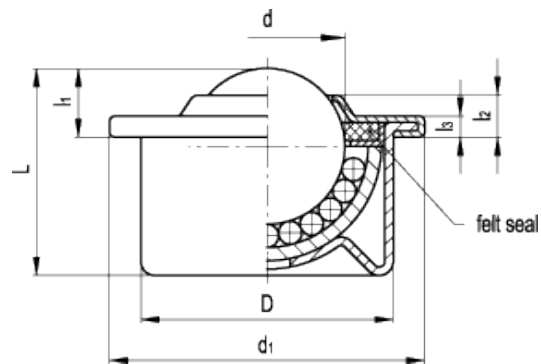


GN 509

Ball transfer units



technical informations

Material

- Zinc-plated drawn sheet steel (execution SBL and SNI).
- Stainless steel (execution NNI).

Retaining components

Zinc-plated steel.

Balls

- Execution SBL: steel.
- Execution SNI: stainless steel.
- Execution NNI: stainless steel.

Retaining ring

Felt seal (only for sizes D= 36 and 45).

Application

GN 509 ball transfer units are particularly suitable on conveyor tracks. They make linear or rotary movements easier even with heavy loads (see [Technical Data](#)).

Standard Elements	Main dimensions							Max. load carrying capacity [N]	Weight
Description	d	L _{±0.3}	D	d ₁	l _{1±0.3}	l _{2±0.3}	l ₃		g
GN 509-15-SBL	15.8	21	24	31	9.5	5	2.5	500	40
GN 509-15-SKU	15.8	21	24	31	9.5	5	2.5	70	40
GN 509-15-SNI	15.8	21	24	31	9.5	5	2.5	300	40
GN 509-15-NNI	15.8	21	24	31	9.5	5	2.5	300	40
GN 509-22-SBL	22.2	29.5	36	45	10	6	3	1200	130
GN 509-22-SKU	22.2	29.5	36	45	10	6	3	100	130
GN 509-22-SNI	22.2	29.5	36	45	10	6	3	900	130
GN 509-22-NNI	22.2	29.5	36	45	10	6	3	900	130
GN 509-30-SBL	30.1	38	45	55	13.5	7	3.5	2000	265
GN 509-30-SKU	30.1	38	45	55	13.5	7	3.5	150	265
GN 509-30-SNI	30.1	38	45	55	13.5	7	3.5	1500	265
GN 509-30-NNI	30.1	38	45	55	13.5	7	3.5	1500	265



ELESA and GANTER models all rights reserved in accordance with the law. Always mention the source when reproducing our drawings.

STANDARD MACHINE ELEMENTS WORLDWIDE