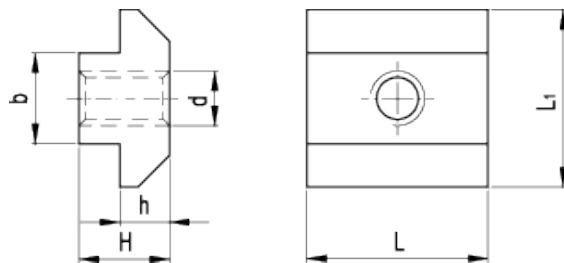


GN 507

Dowels for T-slots



technical informations

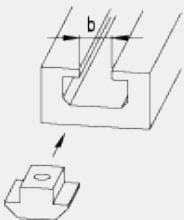
Material

Zinc-plated steel.

Features and applications

T-nuts GN 507 have been specially designed for use on aluminium extrusion rails. They are inserted from either end of the T-slot.

Application example



Standard Elements	Main dimensions						Width	Weight
Description	$b_{-0.1/-0.3}$	d	L	L_1	H	$h_{+0.1}$	g	
GN 507-8-M4	8	M4	16	16	6	4.2	8	13
GN 507-8-M5	8	M5	16	16	6	4.2	8	12
GN 507-8-M6	8	M6	16	16	6	4.2	8	11
GN 507-8-M8	8	M8	16	16	6	4.2	8	10
GN 507-10-M4	10	M4	20	19.5	10	5.5	10	13
GN 507-10-M5	10	M5	20	19.5	10	5.5	10	12
GN 507-10-M6	10	M6	20	19.5	10	5.5	10	11
GN 507-10-M8	10	M8	20	19.5	10	5.5	10	10



STANDARD MACHINE ELEMENTS WORLDWIDE