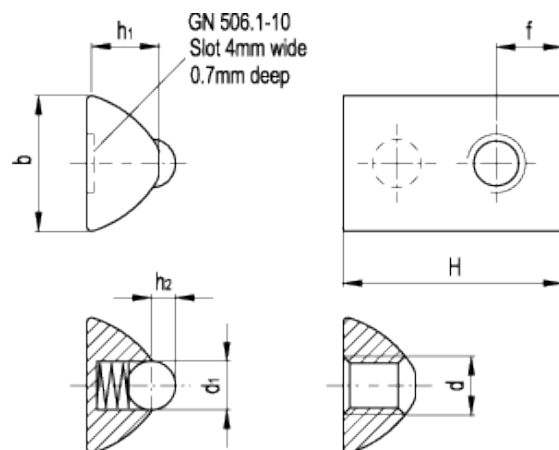


GN 506.1

Dowels for T-slots with no-slip device



technical informations

Material

Zinc-plated steel.

Ball

AISI 52100 stainless steel.

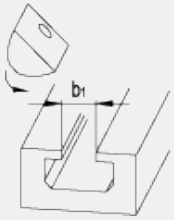
Spring

AISI 301 stainless steel.

Features and applications

T-nuts with guide step GN 506.1 can be turned into position, i.e. they can be inserted at any point along the slot. The spring loaded ball will prevent an unwanted movement of the nut in the slot which is highly desirable on a bed with the T-slots in a vertical position. As an example, T-nuts GN 506.1 can be used to fit hinges to commercially available extrusion rails.

Application example



Standard Elements	Main dimensions							Width	Weight
Description	b	d	H _{+0.5}	d ₁	h ₁	h ₂	f	b ₁	g
GN 506.1-8-M3	8 _{-0.1}	M3	12	3	4.25	0.7	4	5	2
GN 506.1-8-M4	8 _{-0.1}	M4	12	3	4.25	0.7	4	5	2
GN 506.1-8-M5	8 _{-0.1}	M5	12	3	4.25	0.7	4	5	2
GN 506.1-10-M3	10 _{+0.3}	M3	17.5	4	6.25	1.15	5	6	5
GN 506.1-10-M4	10 _{+0.3}	M4	17.5	4	6.25	1.15	5	6	5
GN 506.1-10-M5	10 _{+0.3}	M5	17.5	4	6.25	1.15	5	6	5
GN 506.1-10-M6	10 _{+0.3}	M6	17.5	4	6.25	1.15	5	6	4
GN 506.1-14-M4	14 _{-0.2}	M4	22.5	5	7.4	1.7	6.8	8	11
GN 506.1-14-M5	14 _{-0.2}	M5	22.5	5	7.4	1.7	6.8	8	11
GN 506.1-14-M6	14 _{-0.2}	M6	22.5	5	7.4	1.7	6.8	8	10
GN 506.1-14-M8	14 _{-0.2}	M8	22.5	5	7.4	1.7	6.8	8	9



STANDARD MACHINE ELEMENTS WORLDWIDE