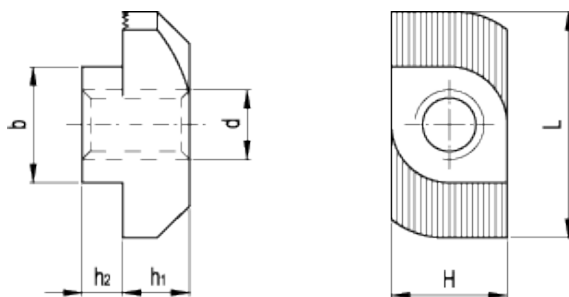


GN 505

Quick-insert dowels for T-slots



technical informations

Material

- Execution MB: zinc-plated steel, with increased torque.
- Execution OB: zinc-plated steel, without increased torque.

Features and applications

T-nuts for aluminium extrusions GN 505 can be inserted vertically into a T-slot like Rhombus nuts GN 508.1.

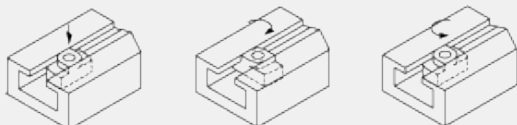
When tightening the clamping bolt, the nut will be forced into a crosswise position by the applied torque and firmly anchored in the T-slot.

This action is achieved by using T-nut type MB which is intentionally fitted with an overtight fit requiring a higher torque.

To remove the bolt and T-nut a 90° anticlockwise turn is sufficient to withdraw the two components with the clamped workpiece.

The clamping face of the T-nut is serrated to ensure that a possible plating coat in the T-slot is penetrated to establish a good electrical contact.

Application example



Standard Elements	Main dimensions						Weight
Description	b _{-0.1/-0.5}	d	L _{±0.5}	H _{-0.1/-0.5}	h _{1-0.4}	h ₂	g
GN 505-8-M4-MB	8	M4	16	8	5	1.6 _{-0.4}	7
GN 505-8-M5-MB	8	M5	16	8	5	1.6 _{-0.4}	7
GN 505-8-M6-MB	8	M6	16	8	5	1.6 _{-0.4}	6
GN 505-10-M4-MB	10	M4	19	10	5.8	3.5 ₋₁	8
GN 505-10-M5-MB	10	M5	19	10	5.8	3.5 ₋₁	7
GN 505-10-M6-MB	10	M6	19	10	5.8	3.5 ₋₁	7
GN 505-10-M8-MB	10	M8	19	10	5.8	3.5 ₋₁	6
GN 505-8-M4-OB	8	M4	16	8	5	1.6 _{-0.4}	7
GN 505-8-M5-OB	8	M5	16	8	5	1.6 _{-0.4}	7
GN 505-8-M6-OB	8	M6	16	8	5	1.6 _{-0.4}	6
GN 505-10-M4-OB	10	M4	19	10	5.8	3.5 ₋₁	8
GN 505-10-M5-OB	10	M5	19	10	5.8	3.5 ₋₁	7
GN 505-10-M6-OB	10	M6	19	10	5.8	3.5 ₋₁	7
GN 505-10-M8-OB	10	M8	19	10	5.8	3.5 ₋₁	6



STANDARD MACHINE ELEMENTS WORLDWIDE