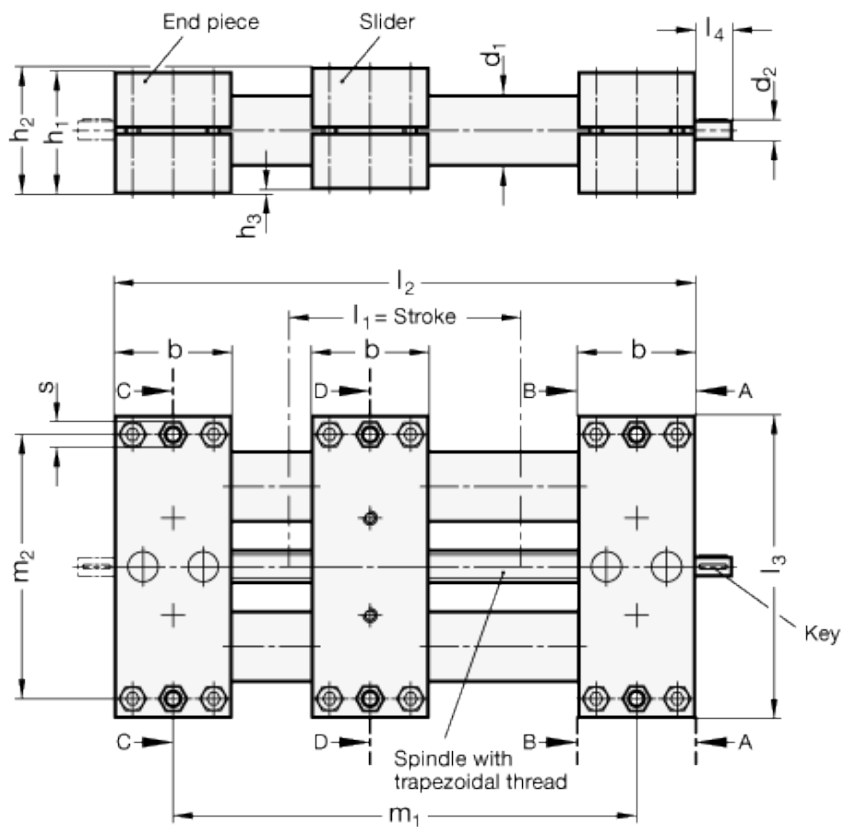


GN 491

Double tube linear actuators



technical informations
Guide tube DIN 2391
Chrome-plated steel SCR.

End pieces/Slider

Aluminium, plastic coated, black RAL 9005, textured finish.
Fixing surface / mounting surface machined, blank.

Spindle with trapezoidal thread

Steel blank, with ball-bearing.
Positioning accuracy $\pm 0.2\text{mm}/300\text{ mm}$ travel.

Follower nut

Gun metal.

Cylinder head screws DIN 912

Zinc-plated steel.

Hexagon nuts DIN 985

Zinc-plated steel.

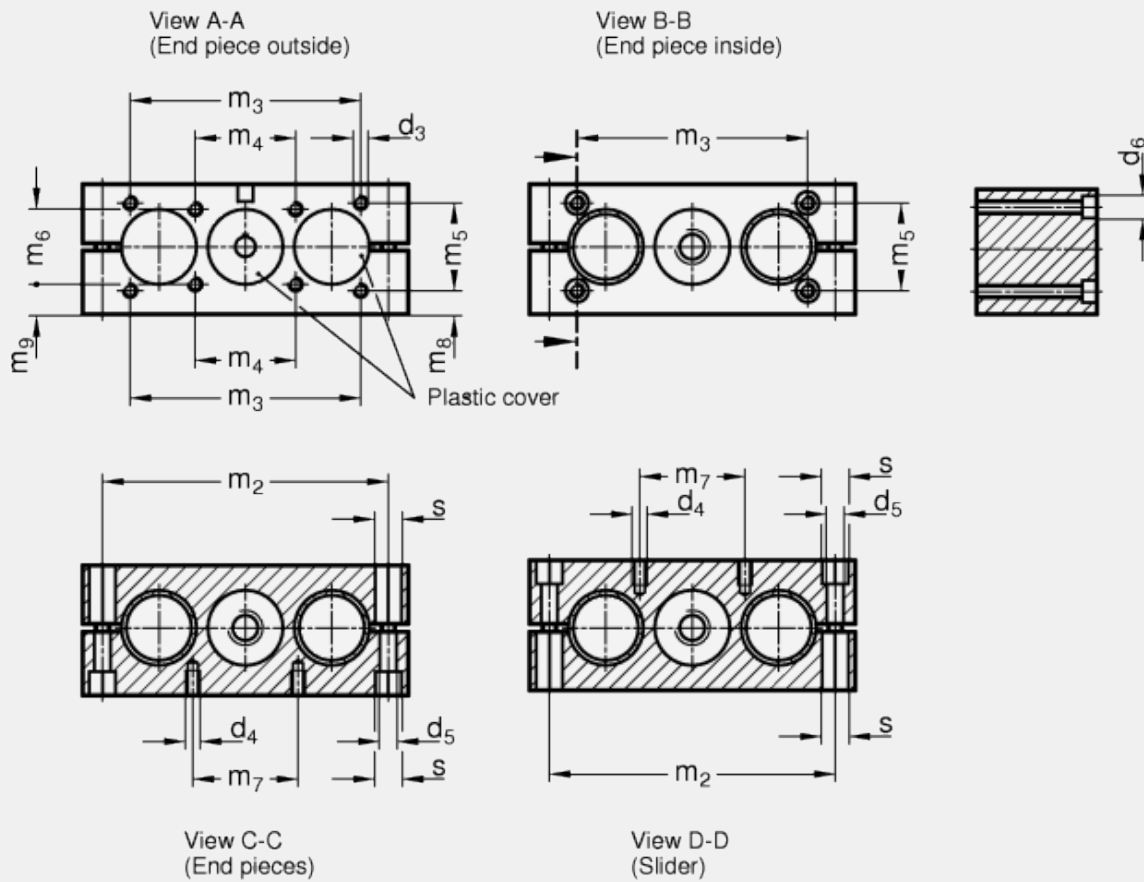
Standard versions available

- Type R1: Right hand thread, single shaft end.
- Type R2*: Right hand thread, two shaft ends.
- Type L1*: Left hand thread, single shaft end.
- Type L2*: Left hand thread, two shaft ends.

* usually not available from stock

Features and applications

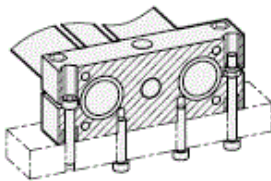
In addition to the standard travel lengths specified in the above table for the double tube linear actuator GN 491 any length inside the maximum length is available.
In order to measure the movement and positioning of the sliders, digital position indicators can be added.



Mounting facilities of the end pieces

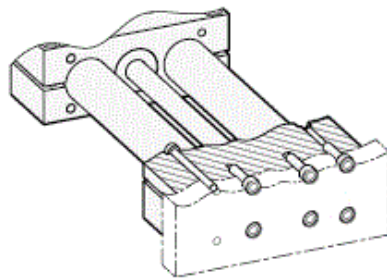
Horizontal

with screws for thread d_4 or bore d_5



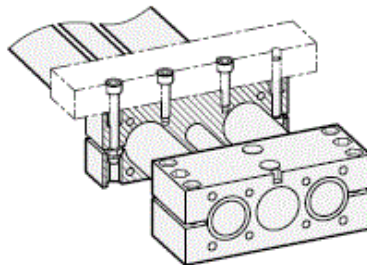
Vertical

From outside, with screws for thread d_4
From inside, with screws for bore d_5



Mounting facilities at the slider

Mounting with screws
for thread d_4 or bore d_5



300-L1-SCR*	30	300	1500	TR14x4 50 8	M 6	M 6	6,5	9	M 5	10,5	M 6	5254	2	27	0,85	3xb+l ₁	130	16	2xb+l ₁	114	92	30	3
GN 491-40-100-L1-SCR*	40	100	2650	TR20x4 60 12	M 8	M 8	8,5	13,5	M 6	13,5	M 8	6063	3	31,5	1,05	3xb+l ₁	180	17	2xb+l ₁	160	132	39	3
GN 491-40-150-L1-SCR*	40	150	2650	TR20x4 60 12	M 8	M 8	8,5	13,5	M 6	13,5	M 8	6063	3	31,5	1,05	3xb+l ₁	180	17	2xb+l ₁	160	132	39	3
GN 491-40-200-L1-SCR*	40	200	2650	TR20x4 60 12	M 8	M 8	8,5	13,5	M 6	13,5	M 8	6063	3	31,5	1,05	3xb+l ₁	180	17	2xb+l ₁	160	132	39	3
GN 491-40-300-L1-SCR*	40	300	2650	TR20x4 60 12	M 8	M 8	8,5	13,5	M 6	13,5	M 8	6063	3	31,5	1,05	3xb+l ₁	180	17	2xb+l ₁	160	132	39	3
GN 491-50-100-L1-SCR*	50	100	2760	TR20x4 72 12	M 10	M 8	8,5	13,5	M 8	13,5	M 8	7276	4	38	1,2	3xb+l ₁	206	18	2xb+l ₁	184	150	46	5
GN 491-50-150-L1-SCR*	50	150	2760	TR20x4 72 12	M 10	M 8	8,5	13,5	M 8	13,5	M 8	7276	4	38	1,2	3xb+l ₁	206	18	2xb+l ₁	184	150	46	5
GN 491-50-200-L1-SCR*	50	200	2760	TR20x4 72 12	M 10	M 8	8,5	13,5	M 8	13,5	M 8	7276	4	38	1,2	3xb+l ₁	206	18	2xb+l ₁	184	150	46	5
GN 491-50-300-L1-SCR*	50	300	2760	TR20x4 72 12	M 10	M 8	8,5	13,5	M 8	13,5	M 8	7276	4	38	1,2	3xb+l ₁	206	18	2xb+l ₁	184	150	46	5
GN 491-60-300-L1-SCR*	60	300	2740	TR25x4 80 14	M10	M10	10,5	13,5	M 8	16,5	M10	8688	2	44	1,35	3xb+l ₁	240	19	2xb+l ₁	216	185	55	6
GN 491-60-400-L1-SCR*	60	400	2740	TR25x4 80 14	M10	M10	10,5	13,5	M 8	16,5	M10	8688	2	44	1,35	3xb+l ₁	240	19	2xb+l ₁	216	185	55	6
GN 491-60-500-L1-SCR*	60	500	2740	TR25x4 80 14	M10	M10	10,5	13,5	M 8	16,5	M10	8688	2	44	1,35	3xb+l ₁	240	19	2xb+l ₁	216	185	55	6
GN 491-18-100-R2-SCR*	18	100	420	TR10x3 28 6	-	M5	5,3	-	-	-	-	2829	1	14,5	0,75	3xb+l ₁	81	16	2xb+l ₁	68	-	20	-
GN 491-18-150-R2-SCR*	18	150	420	TR10x3 28 6	-	M5	5,3	-	-	-	-	2829	1	14,5	0,75	3xb+l ₁	81	16	2xb+l ₁	68	-	20	-
GN 491-18-200-R2-SCR*	18	200	420	TR10x3 28 6	-	M5	5,3	-	-	-	-	2829	1	14,5	0,75	3xb+l ₁	81	16	2xb+l ₁	68	-	20	-
GN 491-18-250-R2-SCR*	18	250	420	TR10x3 28 6	-	M5	5,3	-	-	-	-	2829	1	14,5	0,75	3xb+l ₁	81	16	2xb+l ₁	68	-	20	-
GN 491-30-100-R2-SCR*	30	100	1500	TR14x4 50 8	M 6	M 6	6,5	9	M 5	10,5	M 6	5254	2	27	0,85	3xb+l ₁	130	16	2xb+l ₁	114	92	30	3
GN 491-30-150-R2-SCR*	30	150	1500	TR14x4 50 8	M 6	M 6	6,5	9	M 5	10,5	M 6	5254	2	27	0,85	3xb+l ₁	130	16	2xb+l ₁	114	92	30	3
GN 491-30-200-R2-SCR*	30	200	1500	TR14x4 50 8	M 6	M 6	6,5	9	M 5	10,5	M 6	5254	2	27	0,85	3xb+l ₁	130	16	2xb+l ₁	114	92	30	3
GN 491-30-300-R2-SCR*	30	300	1500	TR14x4 50 8	M 6	M 6	6,5	9	M 5	10,5	M 6	5254	2	27	0,85	3xb+l ₁	130	16	2xb+l ₁	114	92	30	3
GN 491-40-100-R2-SCR*	40	100	2650	TR20x4 60 12	M 8	M 8	8,5	13,5	M 6	13,5	M 8	6063	3	31,5	1,05	3xb+l ₁	180	17	2xb+l ₁	160	132	39	3
GN 491-40-150-R2-SCR*	40	150	2650	TR20x4 60 12	M 8	M 8	8,5	13,5	M 6	13,5	M 8	6063	3	31,5	1,05	3xb+l ₁	180	17	2xb+l ₁	160	132	39	3

GN 491-40-200-R2-SCR*	40	200	2650	TR20x4 60 12	M8	M8	8,5	13,5	M6	13,5	M8	6063	3	31,5	1,05	3xb+l ₁	180	17	2xb+l ₁	160	132	39	3
GN 491-40-300-R2-SCR*	40	300	2650	TR20x4 60 12	M8	M8	8,5	13,5	M6	13,5	M8	6063	3	31,5	1,05	3xb+l ₁	180	17	2xb+l ₁	160	132	39	3
GN 491-50-100-R2-SCR*	50	100	2760	TR20x4 72 12	M10	M8	8,5	13,5	M8	13,5	M8	7276	4	38	1,2	3xb+l ₁	206	18	2xb+l ₁	184	150	46	5
GN 491-50-150-R2-SCR*	50	150	2760	TR20x4 72 12	M10	M8	8,5	13,5	M8	13,5	M8	7276	4	38	1,2	3xb+l ₁	206	18	2xb+l ₁	184	150	46	5
GN 491-50-200-R2-SCR*	50	200	2760	TR20x4 72 12	M10	M8	8,5	13,5	M8	13,5	M8	7276	4	38	1,2	3xb+l ₁	206	18	2xb+l ₁	184	150	46	5
GN 491-50-300-R2-SCR*	50	300	2760	TR20x4 72 12	M10	M8	8,5	13,5	M8	13,5	M8	7276	4	38	1,2	3xb+l ₁	206	18	2xb+l ₁	184	150	46	5
GN 491-60-300-R2-SCR*	60	300	2740	TR25x4 80 14	M10	M10	10,5	13,5	M8	16,5	M10	8688	2	44	1,35	3xb+l ₁	240	19	2xb+l ₁	216	185	55	6
GN 491-60-400-R2-SCR*	60	400	2740	TR25x4 80 14	M10	M10	10,5	13,5	M8	16,5	M10	8688	2	44	1,35	3xb+l ₁	240	19	2xb+l ₁	216	185	55	6
GN 491-60-500-R2-SCR*	60	500	2740	TR25x4 80 14	M10	M10	10,5	13,5	M8	16,5	M10	8688	2	44	1,35	3xb+l ₁	240	19	2xb+l ₁	216	185	55	6
GN 491-18-100-L2-SCR*	18	100	420	TR10x3 28 6	-	M5	5,3	-	-	-	-	2829	1	14,5	0,75	3xb+l ₁	81	16	2xb+l ₁	68	-	20	-
GN 491-18-150-L2-SCR*	18	150	420	TR10x3 28 6	-	M5	5,3	-	-	-	-	2829	1	14,5	0,75	3xb+l ₁	81	16	2xb+l ₁	68	-	20	-
GN 491-18-200-L2-SCR*	18	200	420	TR10x3 28 6	-	M5	5,3	-	-	-	-	2829	1	14,5	0,75	3xb+l ₁	81	16	2xb+l ₁	68	-	20	-
GN 491-18-250-L2-SCR*	18	250	420	TR10x3 28 6	-	M5	5,3	-	-	-	-	2829	1	14,5	0,75	3xb+l ₁	81	16	2xb+l ₁	68	-	20	-
GN 491-30-100-L2-SCR*	30	100	1500	TR14x4 50 8	M6	M6	6,5	9	M5	10,5	M6	5254	2	27	0,85	3xb+l ₁	130	16	2xb+l ₁	114	92	30	3
GN 491-30-150-L2-SCR*	30	150	1500	TR14x4 50 8	M6	M6	6,5	9	M5	10,5	M6	5254	2	27	0,85	3xb+l ₁	130	16	2xb+l ₁	114	92	30	3
GN 491-30-200-L2-SCR*	30	200	1500	TR14x4 50 8	M6	M6	6,5	9	M5	10,5	M6	5254	2	27	0,85	3xb+l ₁	130	16	2xb+l ₁	114	92	30	3
GN 491-30-300-L2-SCR*	30	300	1500	TR14x4 50 8	M6	M6	6,5	9	M5	10,5	M6	5254	2	27	0,85	3xb+l ₁	130	16	2xb+l ₁	114	92	30	3
GN 491-40-100-L2-SCR*	40	100	2650	TR20x4 60 12	M8	M8	8,5	13,5	M6	13,5	M8	6063	3	31,5	1,05	3xb+l ₁	180	17	2xb+l ₁	160	132	39	3
GN 491-40-150-L2-SCR*	40	150	2650	TR20x4 60 12	M8	M8	8,5	13,5	M6	13,5	M8	6063	3	31,5	1,05	3xb+l ₁	180	17	2xb+l ₁	160	132	39	3
GN 491-40-200-L2-SCR*	40	200	2650	TR20x4 60 12	M8	M8	8,5	13,5	M6	13,5	M8	6063	3	31,5	1,05	3xb+l ₁	180	17	2xb+l ₁	160	132	39	3
GN 491-40-300-L2-SCR*	40	300	2650	TR20x4 60 12	M8	M8	8,5	13,5	M6	13,5	M8	6063	3	31,5	1,05	3xb+l ₁	180	17	2xb+l ₁	160	132	39	3
GN 491-50-100-L2-SCR*	50	100	2760	TR20x4 72 12	M10	M8	8,5	13,5	M8	13,5	M8	7276	4	38	1,2	3xb+l ₁	206	18	2xb+l ₁	184	150	46	5

GN 491-50-150-L2-SCR*	50	150	2760	TR20x4	72	12	M 10	M 8	8,5	13,5	M 8	13,5	M 8	72	76	4	38	1,2	3xb+l ₁	206	18	2xb+l ₁	184	150	46	5
GN 491-50-200-L2-SCR*	50	200	2760	TR20x4	72	12	M 10	M 8	8,5	13,5	M 8	13,5	M 8	72	76	4	38	1,2	3xb+l ₁	206	18	2xb+l ₁	184	150	46	5
GN 491-50-300-L2-SCR*	50	300	2760	TR20x4	72	12	M 10	M 8	8,5	13,5	M 8	13,5	M 8	72	76	4	38	1,2	3xb+l ₁	206	18	2xb+l ₁	184	150	46	5
GN 491-60-300-L2-SCR*	60	300	2740	TR25x4	80	14	M10	M10	10,5	13,5	M8	16,5	M10	86	88	2	44	1,35	3xb+l ₁	240	19	2xb+l ₁	216	185	55	6
GN 491-60-400-L2-SCR*	60	400	2740	TR25x4	80	14	M10	M10	10,5	13,5	M8	16,5	M10	86	88	2	44	1,35	3xb+l ₁	240	19	2xb+l ₁	216	185	55	6
GN 491-60-500-L2-SCR*	60	500	2740	TR25x4	80	14	M10	M10	10,5	13,5	M8	16,5	M10	86	88	2	44	1,35	3xb+l ₁	240	19	2xb+l ₁	216	185	55	6

* normally not available from stock ** usable depth of thread min. $2 \times d_3$ *** usable depth of thread min. $1.5 \times d_4$ # for screw DIN 912



ELESA and GANTER models all rights reserved in accordance with the law. Always mention the source when reproducing our drawings.

STANDARD MACHINE ELEMENTS WORLDWIDE