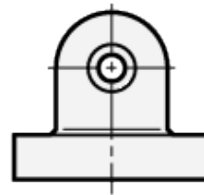
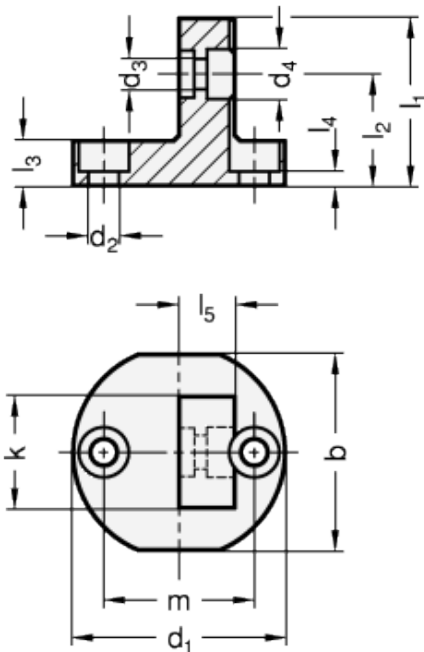
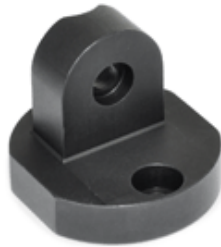
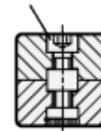


GN 485

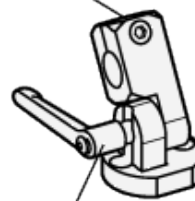
Base plate swivel clamp mountings



Clamping kit
GN 511.1, Type K



Swivel clamp mounting
GN 482



Clamping kit
GN 511.1, Type S



technical informations

Specification

Aluminium

- matt, tumbled finish MT
- anodized, black ELS

Information

Base plate swivel clamp mountings GN 485 can be combined with swivel clamp mountings GN 482, T-swivel clamp mountings GN 483 and attachment clamp mountings GN 484 with the same k dimensions into swivel clamp mounting joints. Clamping kits GN 511.1 with screw (type S) and adjustable hand lever (type K) are available for this combination (code no. for ordering is shown in the dimensional table).

The bore distance m of the base plate clamp mountings GN 485 is matched with the base plate clamp mountings, clamp

mountings GN 477, flanged bolts GN 480 as well as retaining magnets GN 51.6.

Accessory

- Clamping kits GN 511.1

Standard Elements	Main dimensions														Clamping kit for d ₃ Type K	Clamping kit for d ₃ Type S	Weight g
	k	b	d ₁ h11	d ₂	d ₃	d ₄	l ₁	l ₂	l ₃	l ₄	l ₅	m					
GN 485-16-MT	16	29	31.5	M4	M4	7.5	25	17	7	3	8	22	GN 511.1-M4-16-K	GN 511.1-M4-16-S	-		
GN 485-20-MT	20	35	38	M5	M5	9	30	20	8	2.5	10	27	GN 511.1-M5-20-K	GN 511.1-M5-20-S	-		
GN 485-25-MT	25	41	45	M6	M6	10.5	37	24.5	10	4	12.5	32	GN 511.1-M6-25-K	GN 511.1-M6-25-S	-		
GN 485-30-MT	30	44	50	M6	M6	10.5	44.5	29.5	12.5	6.5	15	36	GN 511.1-M6-30-K	GN 511.1-M6-30-S	-		
GN 485-16-ELS	16	29	31.5	M4	M4	7.5	25	17	7	3	8	22	GN 511.1-M4-16-K	GN 511.1-M4-16-S	-		
GN 485-20-ELS	20	35	38	M5	M5	9	30	20	8	2.5	10	27	GN 511.1-M5-20-K	GN 511.1-M5-20-S	-		
GN 485-25-ELS	25	41	45	M6	M6	10.5	37	24.5	10	4	12.5	32	GN 511.1-M6-25-K	GN 511.1-M6-25-S	-		
GN 485-30-ELS	30	44	50	M6	M6	10.5	44.5	29.5	12.5	6.5	15	36	GN 511.1-M6-30-K	GN 511.1-M6-30-S	-		



STANDARD MACHINE ELEMENTS WORLDWIDE