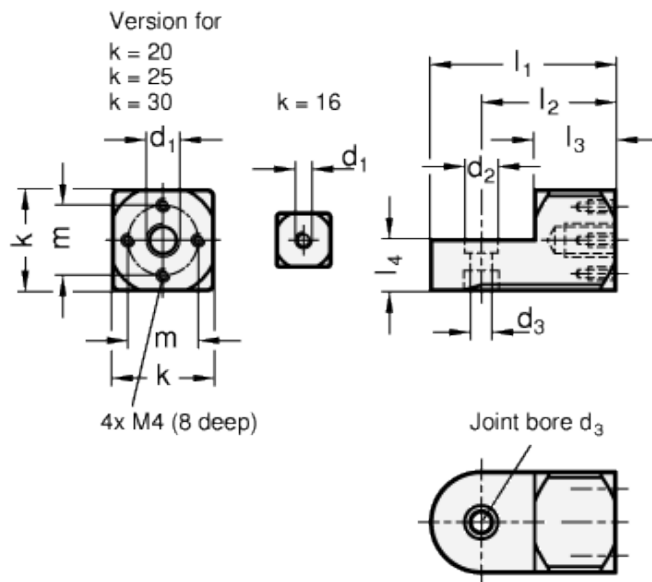
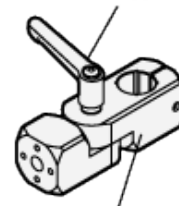


# GN 484

Attachment clamp mountings

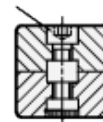


Swivel clamp  
mounting joint  
with clamping kit  
GN 511.1, Type K



Swivel clamp mounting  
GN 482, Type P

Clamping kit  
GN 511.1, Type S



technical informations

## Material

Aluminium.

## Finish

- Version MT: slided grounded, matte.
- Version ELS: black anodized.

## Features and applications

Attachment clamp mountings GN 484 are primarily designed for mounting sensor holders GN 479 and retaining plates GN 479.1. They are fitted with a central thread and for the size with  $k = 20$  and higher, an additional bore template  $4 \times M4$ . Using swivel clamp mountings GN 482 and T-Swivel clamp mountings GN 483 with the same  $k$  dimensions, attachment clamp mountings GN 484 are easily combined into articulated swivel clamp mounting joints. Clamping kits GN 511.1 with screw, type S and adjustable hand lever, type K are available for this purpose (description see table of dimensions).

Standard Elements	Main dimensions									Clamping kit for d3 Type S	Clamping kit for d3 Type K	Weight g
	Description	d <sub>1</sub>	k	d <sub>2</sub>	d <sub>3</sub>	l <sub>1</sub>	l <sub>2</sub>	l <sub>3</sub>	l <sub>4</sub>			
GN 484-M5-16-MT	M5	16	7	4.5	30	22	13	8	-	GN 511.1-M4-16-S	GN 511.1-M4-16-K	12
GN 484-M5-16-ELS	M5	16	7	4.5	30	22	13	8	-	GN 511.1-M4-16-S	GN 511.1-M4-16-K	12
GN 484-M6-16-MT	M6	16	7	4.5	30	22	13	8	-	GN 511.1-M4-16-S	GN 511.1-M4-16-K	12
GN 484-M6-16-ELS	M6	16	7	4.5	30	22	13	8	-	GN 511.1-M4-16-S	GN 511.1-M4-16-K	12
GN 484-M8-16-MT	M8	16	7	4.5	30	22	13	8	-	GN 511.1-M4-16-S	GN 511.1-M4-16-K	12
GN 484-M8-16-ELS	M8	16	7	4.5	30	22	13	8	-	GN 511.1-M4-16-S	GN 511.1-M4-16-K	12
GN 484-M6-20-MT	M6	20	8.5	5.5	38	28	17	10	14	GN 511.1-M5-20-S	GN 511.1-M5-20-K	24
GN 484-M6-20-ELS	M6	20	8.5	5.5	38	28	17	10	14	GN 511.1-M5-20-S	GN 511.1-M5-20-K	24
GN 484-M8-20-MT	M8	20	8.5	5.5	38	28	17	10	14	GN 511.1-M5-20-S	GN 511.1-M5-20-K	24
GN 484-M8-20-ELS	M8	20	8.5	5.5	38	28	17	10	14	GN 511.1-M5-20-S	GN 511.1-M5-20-K	24
GN 484-M8-25-MT	M8	25	10	6.5	46	33.5	20	12.5	17	GN 511.1-M6-25-S	GN 511.1-M6-25-K	46
GN 484-M8-25-ELS	M8	25	10	6.5	46	33.5	20	12.5	17	GN 511.1-M6-25-S	GN 511.1-M6-25-K	46
GN 484-M10-25-MT	M10	25	10	6.5	46	33.5	20	12.5	17	GN 511.1-M6-25-S	GN 511.1-M6-25-K	46
GN 484-M10-25-ELS	M10	25	10	6.5	46	33.5	20	12.5	17	GN 511.1-M6-25-S	GN 511.1-M6-25-K	46
GN 484-M8-30-MT	M8	30	10	6.5	55	40	24	15	20	GN 511.1-M6-30-S	GN 511.1-M6-30-K	58
GN 484-M8-30-ELS	M8	30	10	6.5	55	40	24	15	20	GN 511.1-M6-30-S	GN 511.1-M6-30-K	58
GN 484-M10-30-MT	M10	30	10	6.5	55	40	24	15	20	GN 511.1-M6-30-S	GN 511.1-M6-30-K	58
GN 484-M10-30-ELS	M10	30	10	6.5	55	40	254	15	20	GN 511.1-M6-30-S	GN 511.1-M6-30-K	58
GN 484-M12-30-MT	M12	30	10	6.5	55	40	24	15	20	GN 511.1-M6-30-S	GN 511.1-M6-30-K	58
GN 484-M12-30-ELS	M12	30	10	6.5	55	40	24	15	20	GN 511.1-M6-30-S	GN 511.1-M6-30-K	58



STANDARD MACHINE ELEMENTS WORLDWIDE