

## Edge handles

### SPECIFICATION

Tube extrusion  
Aluminium

End caps  
Zinc die casting

Tube extrusion / End caps  
plastic coated  
black, RAL 9005, textured finish **SW**  
anodized, natural color **EL**

Countersunk screws  
self tapping, with internal hexalobular  
black, zinc plated

### INFORMATION

GN 481 edge handles are particularly compact and are used, for example, on the side of monitor housings as a handling aid or generally to protect the edges of housings.

Tolerance compensation of 1 mm per end cap simplifies installation. The two end caps are mounted to the handle profile with self-tapping countersunk screws so they can be screwed back on after adjusting the length of the handle without requiring readjustment. This allows the length of the housing to be adapted to any desired size.

### ACCESSORY

Four DIN 7500-1 countersunk screws are included.

### ON REQUEST

Tube extrusion  
anodized, natural colour

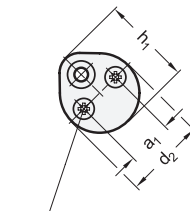
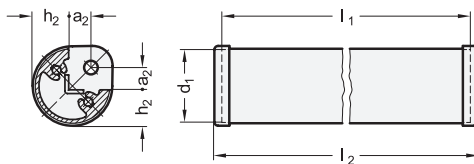
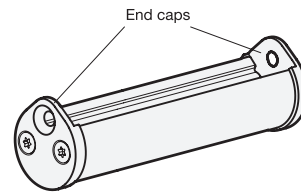
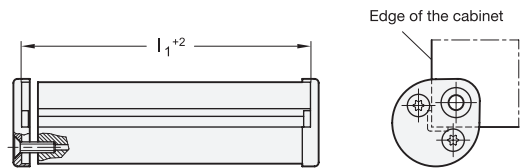
End caps, plastic coated  
silver, textured finish

### MOUNTING INFORMATION

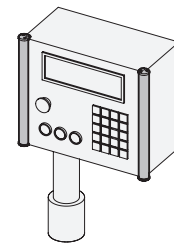
In order to align the edge handle with the edge of the cabinet (tolerance  $l_1 + 2$  mm), the end caps should, to start with, only be loosely fitted

The mounting is carried out in two steps as follows:

- Fit the end caps firmly to the cabinet.
- Fix the extrusion axially by using the countersunk screws.



Countersunk screw  
DIN 7500-1, Type M



### GN 481

Description	d1 -0.5	l1 +2	a1	a2	d2	h1	h2 -0.1	l2	⚖
GN 481-30-100-SW	30	100	18	9	32	34.5	14.5	106	105
GN 481-30-100-EL	30	100	18	9	32	34.5	14.5	106	105
GN 481-30-200-SW	30	200	18	9	32	34.5	14.5	206	150
GN 481-30-200-EL	30	200	18	9	32	34.5	14.5	206	150
GN 481-30-300-SW	30	300	18	9	32	34.5	14.5	306	202
GN 481-30-300-EL	30	300	18	9	32	34.5	14.5	306	202
GN 481-30-400-SW	30	400	18	9	32	34.5	14.5	406	250
GN 481-30-400-EL	30	400	18	9	32	34.5	14.5	406	250
GN 481-30-500-SW	30	500	18	9	32	34.5	14.5	506	300
GN 481-30-500-EL	30	500	18	9	32	34.5	14.5	506	300

