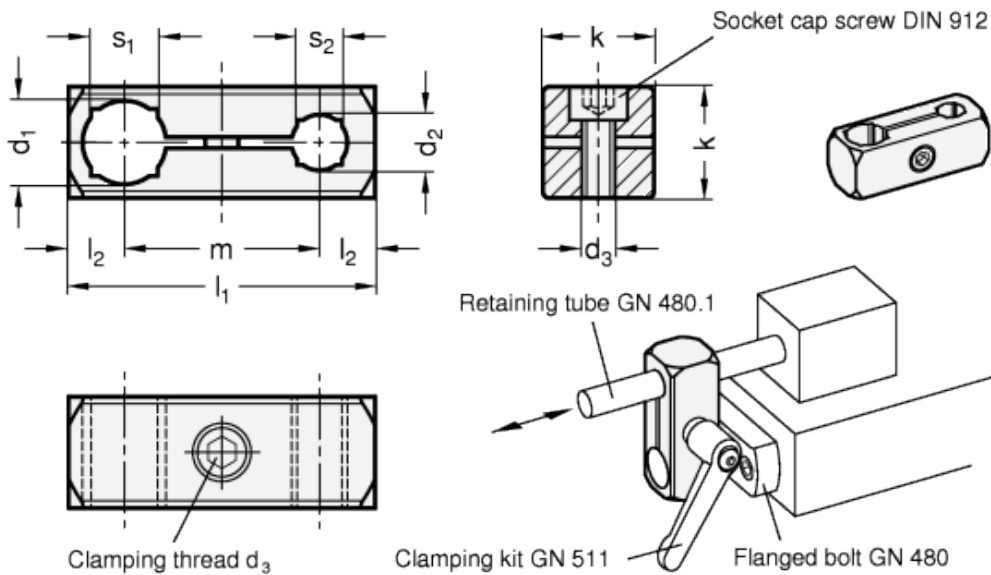


# GN 474.1

Two-way clamp mountings



## technical informations

### Specification

Aluminium

- matt, tumbled finish MT
- anodized, black ELS

Socket cap screws DIN 912  
Stainless Steel AISI 304

### Information

The Standard version of the clamping screw is a socket cap screw with hexagonal socket DIN 912. It can be replaced by a clamping kit GN 511 (see table of dimensions).

Standard Elements	Main dimensions										Clamping kits for $d_3$	Weight
Description	$d_1$ Bore B for shaft tol. h11	$d_2$ Bore B for shaft tol. h11	k	$d_3$ Clamping thread	$l_1$	$l_2$	m	$S_1$ Square V	$S_2$ Square V			g
GN 474.1-B8-B8-MT	B 8	B 8	14	M4	38	7	24	-	-	GN 511-M4-14	-	
GN 474.1-B10-B8-MT	B 10	B 8	16	M5	44	8	28	8	-	GN 511-M5-16	-	
GN 474.1-B10-B10-MT	B 10	B 10	16	M5	44	8	28	8	8	GN 511-M5-16	-	
GN 474.1-B12-B8-MT	B 12	B 8	16	M5	45	8	29	10	-	GN 511-M5-16	-	
GN 474.1-B12-B10-MT	B 12	B 10	16	M5	45	8	29	10	8	GN 511-M5-16	-	
GN 474.1-B12-B12-MT	B 12	B 12	16	M5	45	8	29	10	10	GN 511-M5-16	-	
GN 474.1-B15-B10-MT	B 15	B 10	20	M6	55	10	35	12	8	GN 511-M6-20	-	
GN 474.1-B15-B12-MT	B 15	B 12	20	M6	55	10	35	12	10	GN 511-M6-20	-	
GN 474.1-B15-B15-MT	B 15	B 15	20	M6	55	10	35	12	12	GN 511-M6-20	-	
GN 474.1-B16-B10-MT	B 16	B 10	20	M6	55	10	35	-	8	GN 511-M6-20	-	
GN 474.1-B16-B12-MT	B 16	B 12	20	M6	55	10	35	-	10	GN 511-M6-20	-	
GN 474.1-B16-B15-MT	B 16	B 15	20	M6	55	10	35	-	12	GN 511-M6-20	-	
GN 474.1-B16-B16-MT	B 16	B 16	20	M6	55	10	35	-	-	GN 511-M6-20	-	
GN 474.1-B20-B12-MT	B 20	B 12	25	M6	66	12.5	41	16	10	Gn 511-M6-25	-	
GN 474.1-B20-B15-MT	B 20	B 15	25	M6	66	12.5	41	16	12	GN 511-M6-25	-	
GN 474.1-B20-B16-MT	B 20	B 16	25	M6	66	12.5	41	16	-	GN 511-M6-25	-	
GN 474.1-B20-B20-MT	B 20	B 20	25	M6	66	12.5	41	16	16	GN 511-M6-25	-	
GN 474.1-B8-B8-ELS	B 8	B 8	14	M4	38	7	24	-	-	GN 511-M4-14	-	
GN 474.1-B10-B8-ELS	B 10	B 8	16	M5	44	8	28	8	-	GN 511-M5-16	-	
GN 474.1-B10-B10-ELS	B 10	B 10	16	M5	44	8	28	8	8	GN 511-M5-16	-	
GN 474.1-B12-B8-ELS	B 12	B 8	16	M5	45	8	-	29	10	GN 511-M5-16	-	
GN 474.1-B12-B10-ELS	B 12	B 10	16	M5	45	8	29	10	8	GN 511-M5-16	-	
GN 474.1-B12-B12-ELS	B 12	B 12	16	M5	45	8	29	10	10	GN 511-M5-16	-	
GN 474.1-B15-B10-ELS	B 15	B 10	20	M6	55	10	35	12	8	GN 511-M6-20	-	
GN 474.1-B15-B12-ELS	B 15	B 12	20	M6	55	10	35	12	10	Gn 511-M6-20	-	
GN 474.1-B15-B15-ELS	B 15	B 15	20	M6	55	10	35	12	12	GN 511-M6-20	-	
GN 474.1-B16-B10-ELS	B 16	B 10	20	M6	55	10	35	-	8	GN 511-M6-20	-	

GN 474.1-B16-B12-ELS	B 16	B 12	20	M6	55	10	35	-	10	GN 511-M6-20	-
GN 474.1-B16-B15-ELS	B 16	B 15	20	M6	55	10	35	-	12	GN 511-M6-20	-
GN 474.1-B16-B16-ELS	B 16	B 16	20	M6	55	10	35	-	-	GN 511-M6-20	-
GN 474.1-B20-B12-ELS	B 20	B 12	25	M6	66	12.5	41	16	10	GN 511-M6-25	-
GN 474.1-B20-B15-ELS	B 20	B 15	25	M6	66	12.5	41	16	12	GN 511-M6-25	-
GN 474.1-B20-B16-ELS	B 20	B 16	25	M6	66	12.5	41	16	-	GN 511-M6-25	-
GN 474.1-B20-B20-ELS	B 20	B 20	25	M6	66	12.5	41	16	16	GN 511-M6-25	-



STANDARD MACHINE ELEMENTS WORLDWIDE