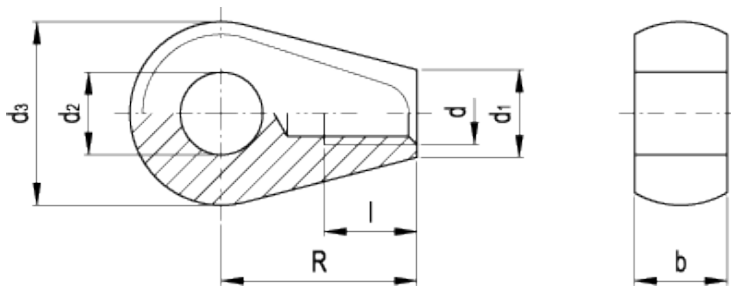


GN 444.2

Eye nuts



technical informations

Material

Black-oxide steel, class 5.8 (tensile strength 500 N/mm²).

Applications

GN 444.2 eye nuts can be used together with threaded studs of different lengths. They are used mainly for assembly equipment and connections.

Standard Elements	Main dimensions							Weight
Description	d	d _{2 H7}	d ₁	d ₃ ^{-0.3}	R	b ^{-0.15}	l _{min.}	g
GN 444.2-M6-8	M6	8	8.5	18	19	9	9	18
GN 444.2-M8-10	M8	10	11	20	24	12	11	30
GN 444.2-M10-12	M10	12	13.5	25	28	14	14	52
GN 444.2-M12-16	M12	16	16	32	34	17	16	11



drawings.

STANDARD MACHINE ELEMENTS WORLDWIDE