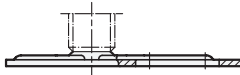


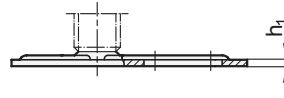
4 Type (Base)

- E0** without rubber underlay, with one slotted hole
- E3** with rubber underlay, vulcanized, black, with one slotted hole
- G0** without rubber underlay, with 2 slotted holes
- G3** with rubber underlay, vulcanized, black, with 2 slotted holes

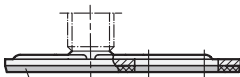
Type E0



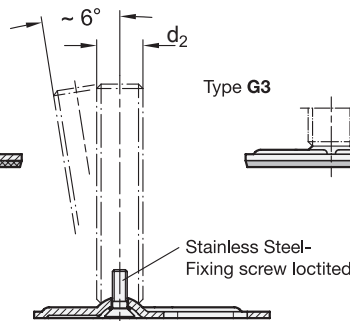
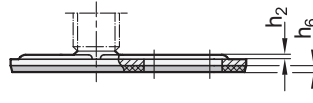
Type G0



Type E3



Type G3



1		2		3		3										3		3				
d ₁	d ₂	I ₁ Version S / SK			Version T / TK und U / UK					I ₂ Version V / VK					I ₃ Version W					I ₇ Vers. X	I ₈	r
80	M 8	40	50	63	-	-	-	-	-	-	-	-	-	-	-	-	-	-	-	26	70	15
80	M 10	50	60	80	100	-	-	-	-	-	-	-	-	-	-	-	-	-	-	29	70	15
80	M 12	60	80	100	125	-	-	-	-	-	-	-	-	-	-	-	-	-	-	32	70	15
80	M 16	-	-	-	-	75	100	125	150	200	75	100	125	150	110	135	160	185	38	70	15	
80	M 20	-	-	-	-	75	100	125	150	200	-	-	-	-	-	-	-	-	-	45	70	15
80	M 24	-	-	-	-	100	125	150	200	-	-	-	-	-	-	-	-	-	-	70	15	

Specification

- Base plate
Stainless Steel
- blank, ground
- AISI 304 (A2)
- Threaded stem
Stainless Steel AISI 303 (A1)
- Hexagon nut ISO 4032
Stainless Steel AISI 304
- Rubber underlay
- vulcanized
- black, Perbunan® (NBR)
70 ±5 Shore A
- *Elastomer characteristics* → Page 1483
- *Stainless Steel characteristics*
→ Page 1489
- *Load rating information* → Page 1472
- **RoHS**

Versions of threaded stem

<p>S without nut SK with nut</p>	<p>T without nut TK with nut</p>	<p>U without nut UK with nut</p>
<p>External hexagon at the bottom at d_2 M 8, M 10, M 12</p>	<p>Wrench flat at the bottom at d_2 M 16, M 20, M 24</p>	<p>Hexagon socket at the top Wrench flat at the bottom at d_2 M 16, M 20, M 24</p>

<p>V without nut VK with nut</p>	<p>W with adjustable sleeve</p>	<p>X with female thread</p>
<p>External hexagon at the top Wrench flat at the bottom at d_2 M 16</p>	<p>Covered thread and wrench flat at the bottom at d_2 M 16</p>	<p>External hexagon with female thread at d_2 M 8, M 10, M 12, M 16, M 20</p>

d_1	d_2	d_3	d_4	d_5	h_1	h_2	h_3	h_4	h_5	h_6	l_4	l_5	l_6	m_1	m_2	m_3	A/F ₁	A/F ₂	A/F ₃	A/F ₄	A/F ₅	A/F ₆	A/F ₇	t
80	M 8	13	10,5	-	3	1,3	12	-	-	3	-	-	-	27	26	50	17	-	-	-	-	-	14	8
80	M 10	13	10,5	-	3	1,3	12	-	-	3	-	-	-	27	26	50	17	-	-	-	-	-	14	10
80	M 12	13	10,5	-	3	1,3	12	-	-	3	-	-	-	27	26	50	17	-	-	-	-	-	17	12
80	M 16	13	10,5	24	3	1,3	-	18	15	3	45	45	29	27	26	50	-	12	8	10	12	20	22	16
80	M 20	13	10,5	-	3	1,3	-	19	-	3	-	-	-	27	26	50	-	15	10	-	-	-	27	20
80	M 24	13	10,5	-	3	1,3	-	22	-	3	-	-	-	27	26	50	-	19	12	-	-	-	-	-

Information

GN 43 Stainless Steel-Levelling feet are for use in aggressive environments. The range of combinations of base plates and adjustable spindle versions allows these levelling feet to be used in every situation.

The levelling feet can be screwed to the mounting surface use the fixing lug, which prevents lateral shifting. Moreover, the types with the rubber underlay protect sensitive surfaces.

The levelling feet are supplied fully assembled and are not removable.

see also...

- Levelling feet GN 40 (Steel, without fixing lug) → Page 1040
- Levelling feet GN 42 (Steel, with fixing lug) → Page 1040
- St. Steel-Levelling feet GN 41 (A2, without fixing lug) → Page 1042
- St. Steel-Levelling feet GN 43 (A2, with fixing lug, drop shape) → Page 1042
- St. Steel-Levelling feet GN 44 / GN 45 (A4, without / with fixing lug) → Page XYZ / XYZ
- Insert bushings GN 448 (Plastic, for tubes) → Page XYZ / XYZ
- Stainless Steel-Insert bushings GN 992.5 (for tubes) → Page 1059

How to order		1	d_1
		2	d_2
		3	l_1 (l_2, l_3, l_7)
		4	Type (Base)
		5	Version (Screw)
GN 43-80-M16-100-G3-UK			