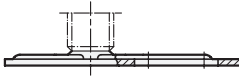


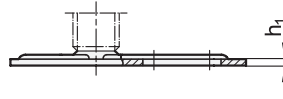
4 Type (Base)

- E0** without rubber underlay, with one slotted hole
- E3** with rubber underlay, vulcanized, black, with one slotted hole
- G0** without rubber underlay, with 2 slotted holes
- G3** with rubber underlay, vulcanized, black, with 2 slotted holes

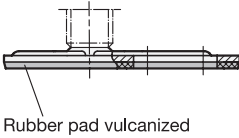
Type E0



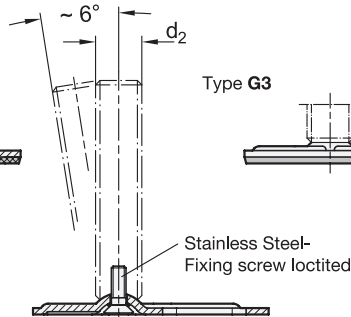
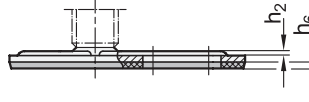
Type G0



Type E3



Type G3



d ₁	d ₂	1					2					l ₇ Vers. X	d ₃	d ₄	h ₁	h ₂	h ₆	l ₈	m ₁	m ₂	m ₃	r
		3		Version S / SK			Version U / UK															
80	M 8	40	50	63	-	-	-	-	-	-	26	13	10,5	3	1,3	3	70	27	26	50	15	
80	M 10	50	60	80	100	-	-	-	-	-	29	13	10,5	3	1,3	3	70	27	26	50	15	
80	M 12	60	80	100	125	-	-	-	-	-	32	13	10,5	3	1,3	3	70	27	26	50	15	
80	M 16	-	-	-	-	75	100	125	150	200	38	13	10,5	3	1,3	3	70	27	26	50	15	
80	M 20	-	-	-	-	75	100	125	150	200	45	13	10,5	3	1,3	3	70	27	26	50	15	
80	M 24	-	-	-	-	100	125	150	200	-	-	13	10,5	3	1,3	3	70	27	26	50	15	

Versions of threaded stem

<p>S without nut SK with nut</p>	<p>U without nut UK with nut</p>	<p>X with female thread</p>
<p>External hexagon at the bottom at d_2 M 8, M 10, M 12</p>	<p>Hexagon socket at the top and wrench flat at the bottom at d_2 M 16, M 20, M 24</p>	<p>External hexagon with female thread at d_2 M 8, M 10, M 12, M 16, M 20</p>

d_1	d_2	h_3	h_4	A/F ₁	A/F ₂	A/F ₃	A/F ₇	t
80	M 8	12	-	17	-	-	14	8
80	M 10	12	-	17	-	-	14	10
80	M 12	12	-	17	-	-	17	12
80	M 16	-	18	-	12	8	22	16
80	M 20	-	19	-	15	10	27	20
80	M 24	-	22	-	19	12	-	-

Specification

- Base plate
Steel
zinc plated, blue passivated
- Threaded stem
Steel
zinc plated, blue passivated
- Hexagon nut ISO 4032
Steel
zinc plated, blue passivated
- Rubber underlay
- vulcanized
- black, Perbunan® (NBR)
70 ±5 Shore A
- *Elastomer characteristics* → Page 1483
- *Load rating information* → Page 1472
- RoHS

Information

GN 42 levelling feet can be used in a host of combinations of base plates and adjustable spindle versions.

The levelling feet can be screwed to the mounting surface use the fixing lug, which prevents lateral shifting. Moreover, the types with the rubber underlay protect sensitive surfaces.

The levelling feet are supplied fully assembled and are not removable.

see also...

- *Levelling feet GN 40 (Steel, without fixing lug)* → Page 1040
- *Levelling feet GN 42 (Steel, with fixing lug, drop shape)* → Page 1040
- *St. Steel-Levelling feet GN 41 (A2, without fixing lug)* → Page 1042
- *St. Steel-Levelling feet GN 43 (A2, with fixing lug)* → Page 1042
- *St. Steel-Levelling feet GN 44 / GN 45 (A4, without / with fixing lug)* → Page XYZ / XYZ
- *Insert bushings GN 448 (Plastic, for tubes)* → Page 1306 / 1307
- *Insert bushings GN 992 / GN 992.5 (Aluminum / Stainless Steel, for tubes)* → Page 1309

How to order

1	d_1
2	d_2
3	l_1 (l_7)
4	Type (Base)
5	Version (Screw)

GN 42-80-M8-63-E3-SK

1.1
1.2
1.3
1.4
3.5
2.1
2.2
2.3
2.4

