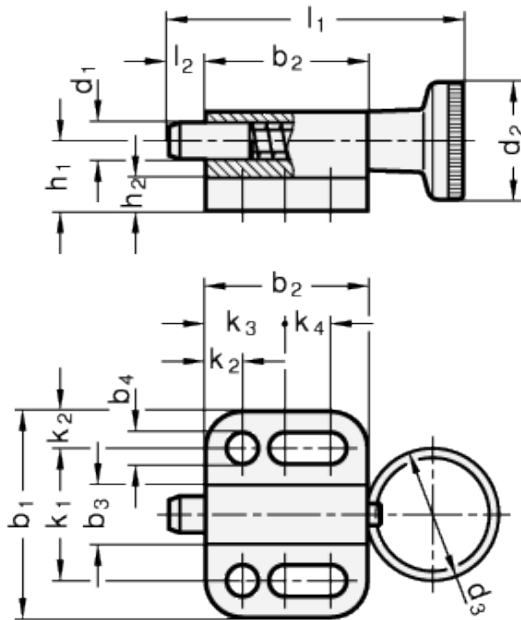
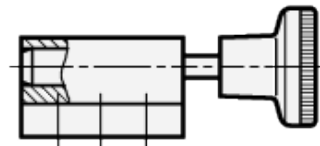


GN 417

Indexing plungers



Plunger retracted



technical informations

Body

Zinc die-casting, plastic coated, black colour, textured finish.

Plunger

AISI 303 stainless steel. Suggested matching hole with tolerance $+0.03 +0.08$

Spring

AISI 301 stainless steel.

Lifting ring

AISI 301 stainless steel.

Knob

Technopolymer, black colour, matte finish, not removable.

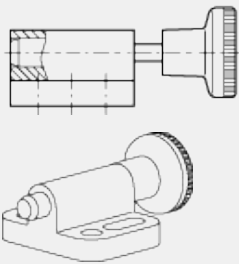
Standard versions available

- Version A: with lifting ring.
- Version B: with knob.

Features and applications

The screwing range is chosen in such a way that washers ISO 7092 can be used.

Plunger out of gear



Standard Elements	Main dimensions																Spring pressure in N \approx		Weight
Description	d_1	h_{11}	d_2	d_3	b_1	b_2	b_3	$b_{4-0.2}$	h_1	h_2	$k_{1 \pm 0.05}$	k_2	k_3	k_4	l_1	$l_2 \pm 0.5$	initial	end	g
GN 417-4-A	7	-	14	22	16.5	6	3.3	-	-	14	4	8	4.5	-	-	3	12	10	
GN 417-5-A	5	-	18	28	22	8	4.3	-	-	18	5	10	7	-	-	5	24	19	
GN 417-6-A	6	-	24	32	27.5	10	5.4	-	-	21	5.5	12	10	-	-	5	21	36	
GN 417-8-A	8	-	30	34	33	12	5.4	-	-	23	5.5	12	15.5	-	-	6	22	60	
GN 417-10-A	10	-	30	39	35	14.5	6.5	-	-	27	6	15	13.5	-	-	4	25	83	
GN 417-4-B	4	12	-	-	16.5	-	-	7	4	-	-	-	-	30.5	4	3	12	10	
GN 417-5-B	5	16	-	-	22	-	-	9.5	4.5	-	-	-	-	40	5	5	24	19	
GN 417-6-B	6	18	-	-	27.5	-	-	10.5	5	-	-	-	-	49	6	5	21	36	
GN 417-8-B	8	21	-	-	33	-	-	12.5	6	-	-	-	-	59	8	6	22	60	
GN 417-10-B	10	25	-	-	35	-	-	14.5	6	-	-	-	-	67.5	10	4	25	83	



ELESA and GANTER models all rights reserved in accordance with the law. Always mention the source when reproducing our drawings.

STANDARD MACHINE ELEMENTS WORLDWIDE